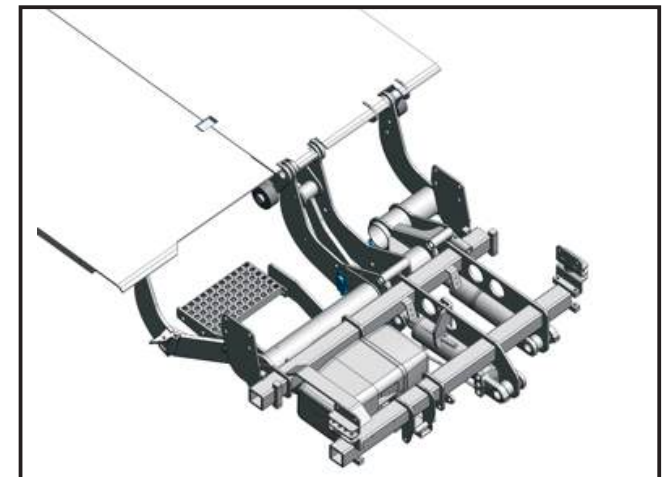
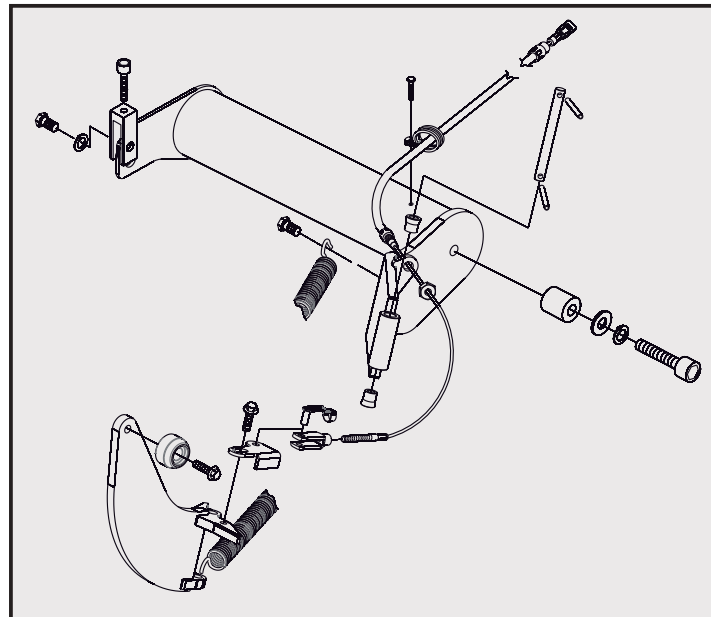
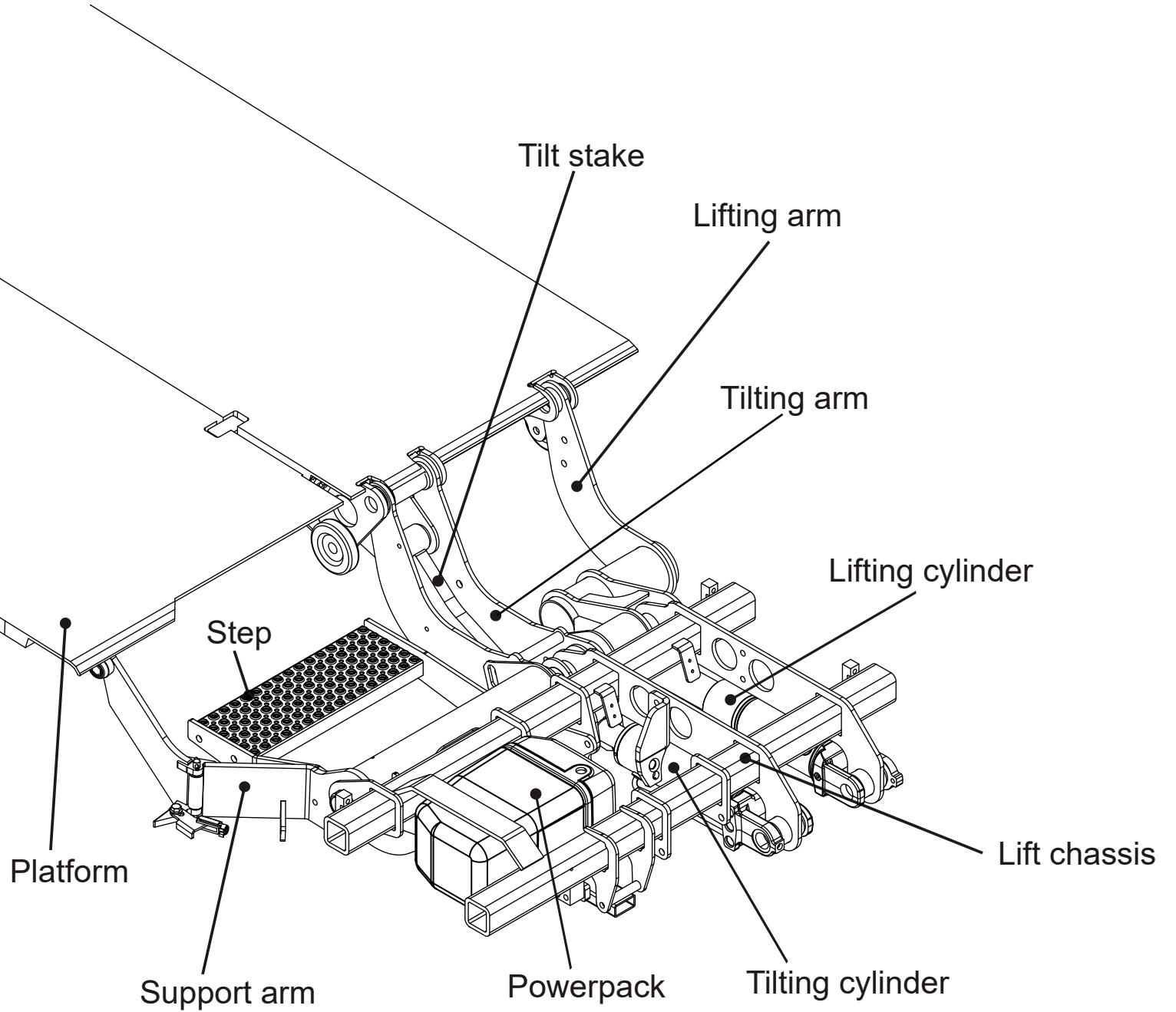
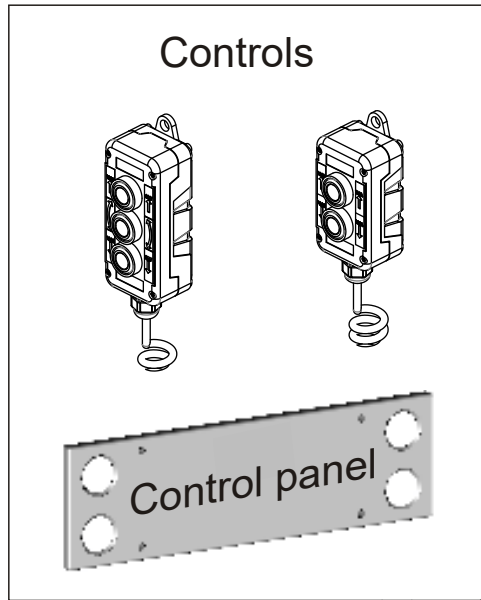


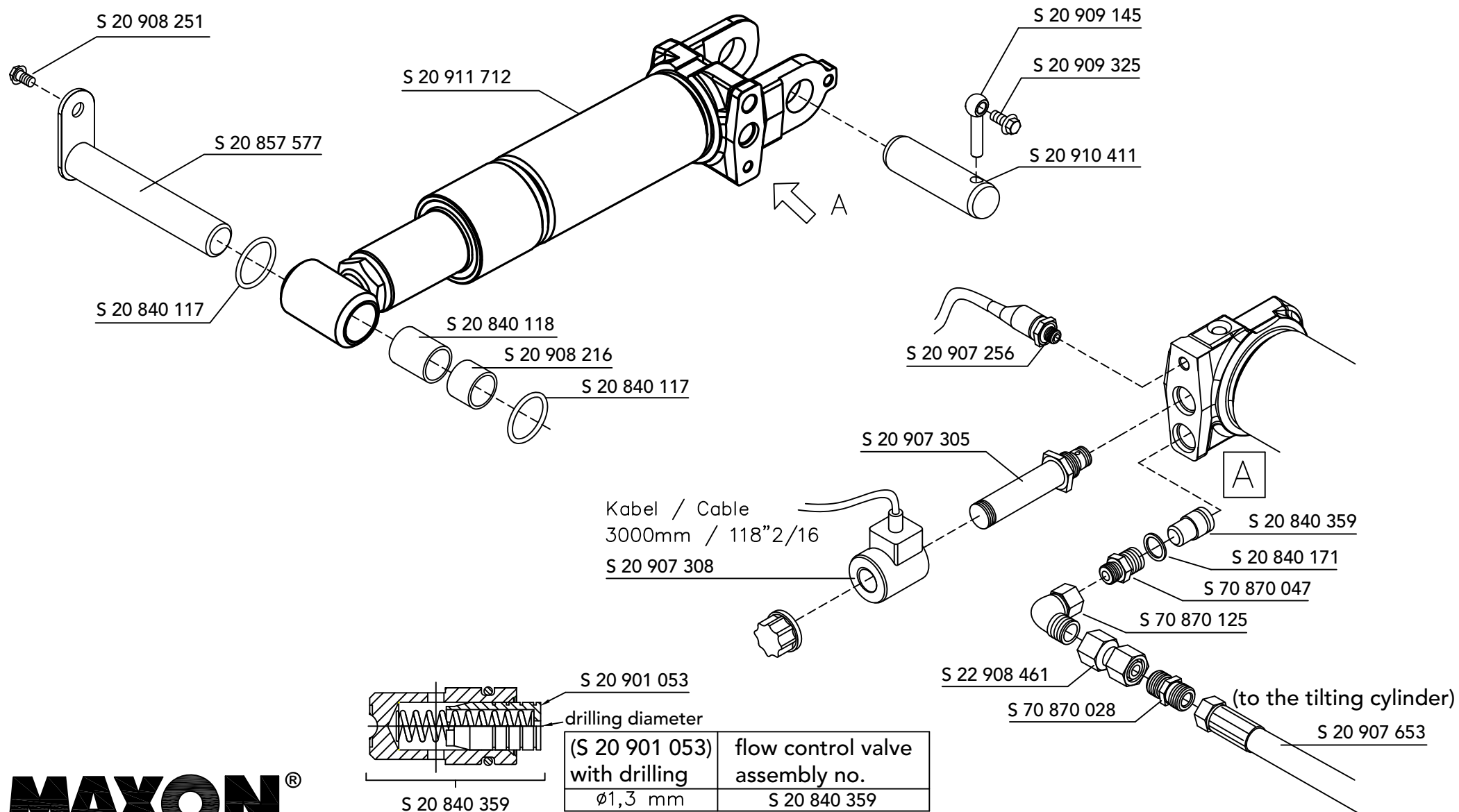
MAXON®

Spare Parts Catalogue GPC X1 LDF





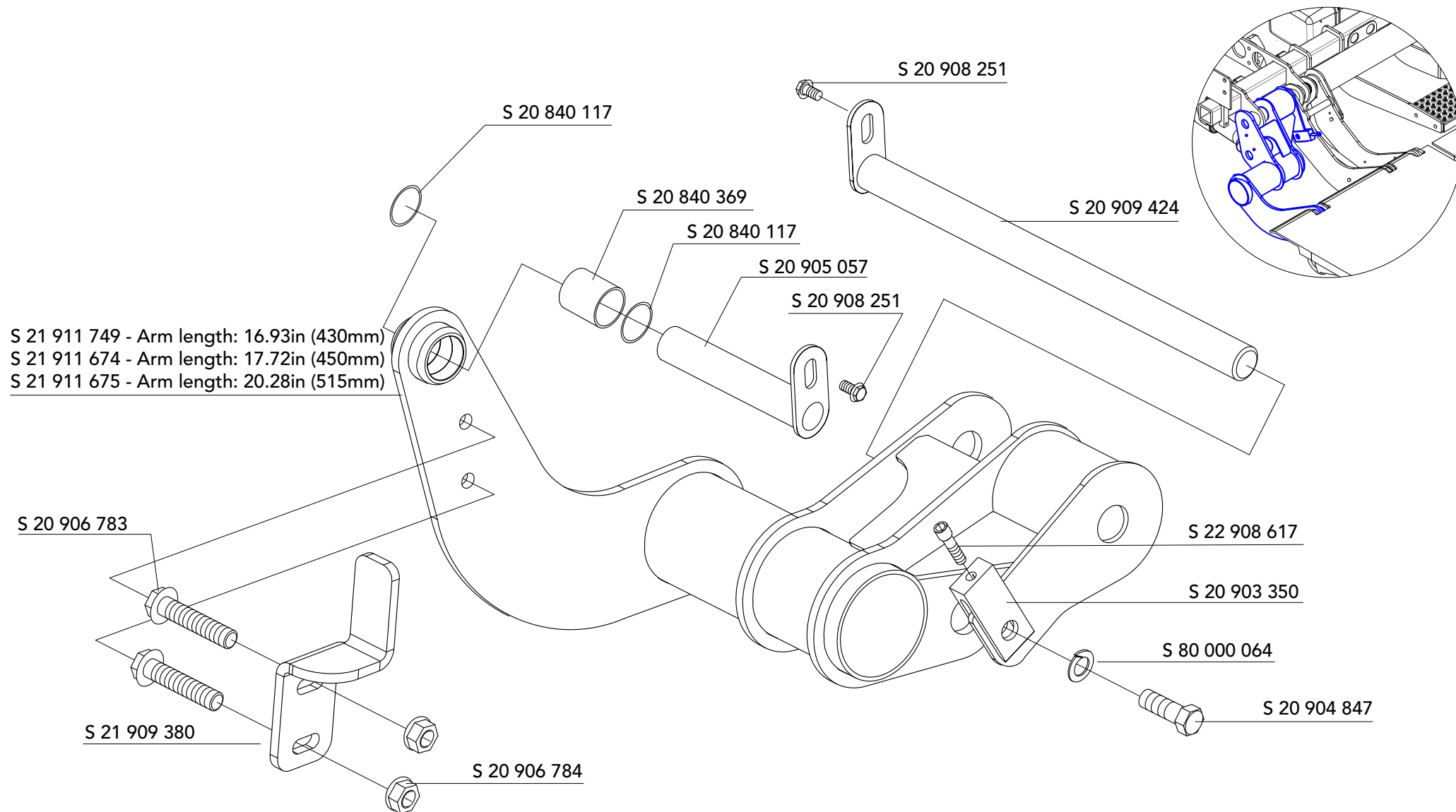
Lifting Cylinder S 20 911 712 - Completion from 2017 / 2018 Onwards



(S 20 901 053) with drilling	flow control valve assembly no.
ø1,3 mm	S 20 840 359

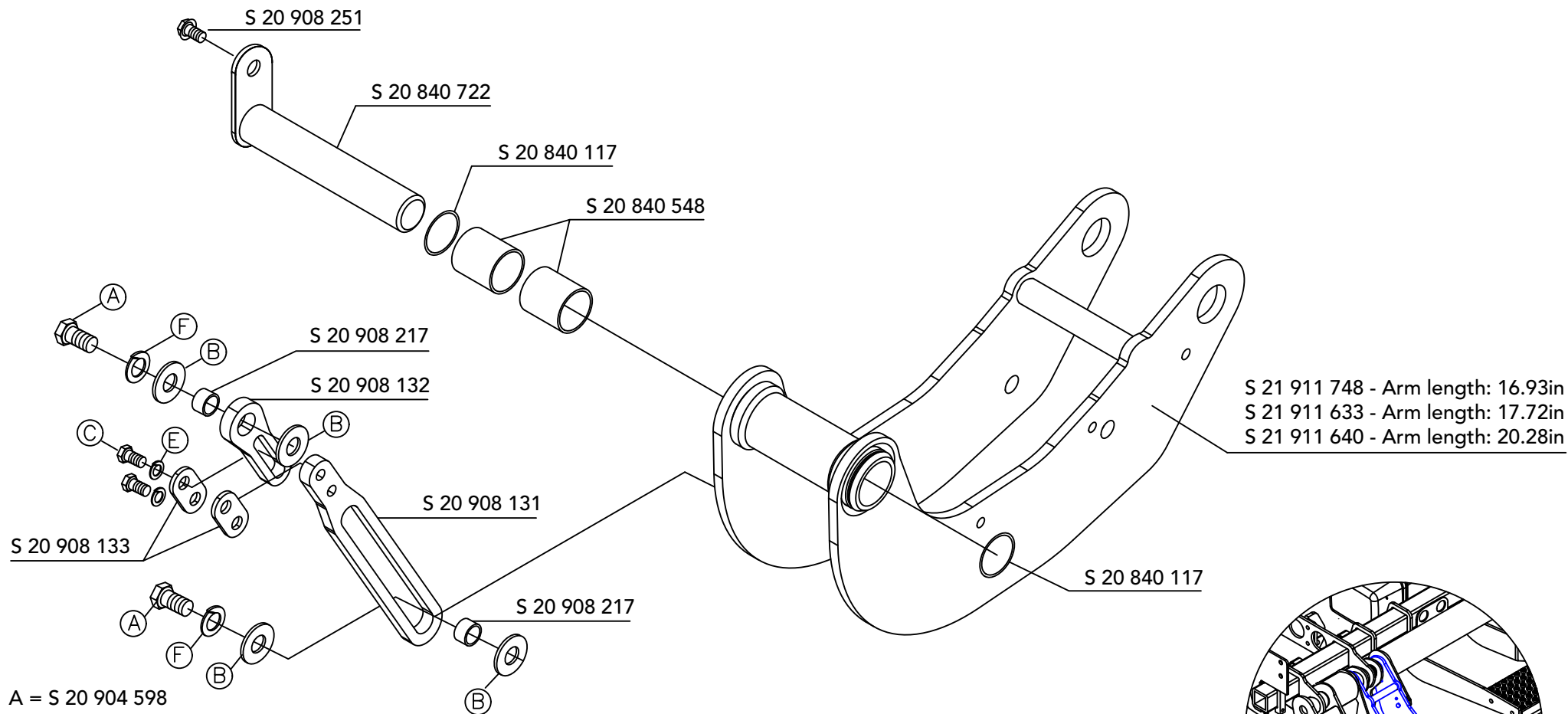


Liftarm / 16.93in / 17.72in / 20.28in / - Completion from 2017 / 2018 Onwards

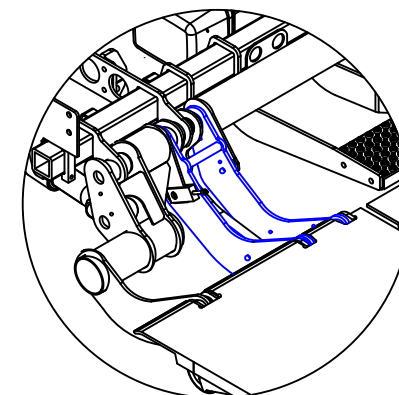


MAXON[®]

Tiltarm / 16.93in / 17.72in / 20.28in / - Completion from 2017 / 2018 Onwards



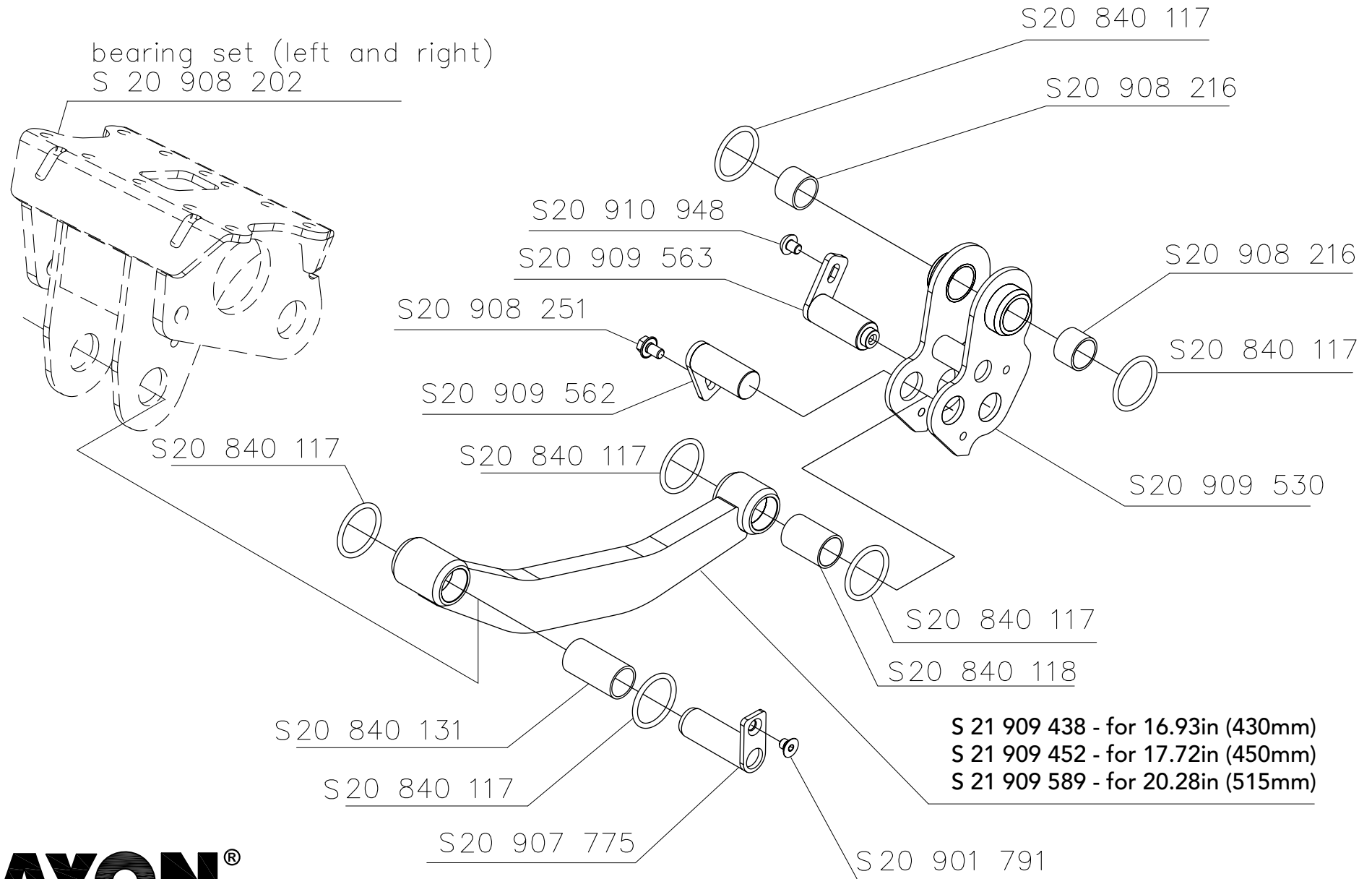
S 21 911 748 - Arm length: 16.93in
 S 21 911 633 - Arm length: 17.72in
 S 21 911 640 - Arm length: 20.28in



- A = S 20 904 598
- B = S 80 000 075
- C = S 80 000 031
- E = S 80 000 062
- F = S 80 000 064

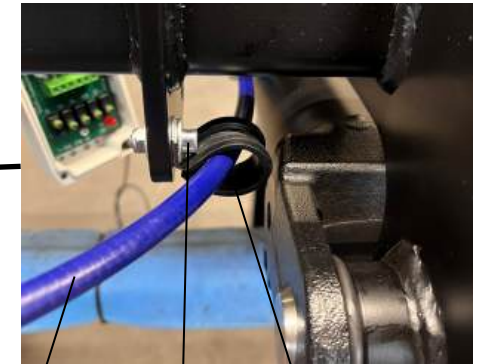
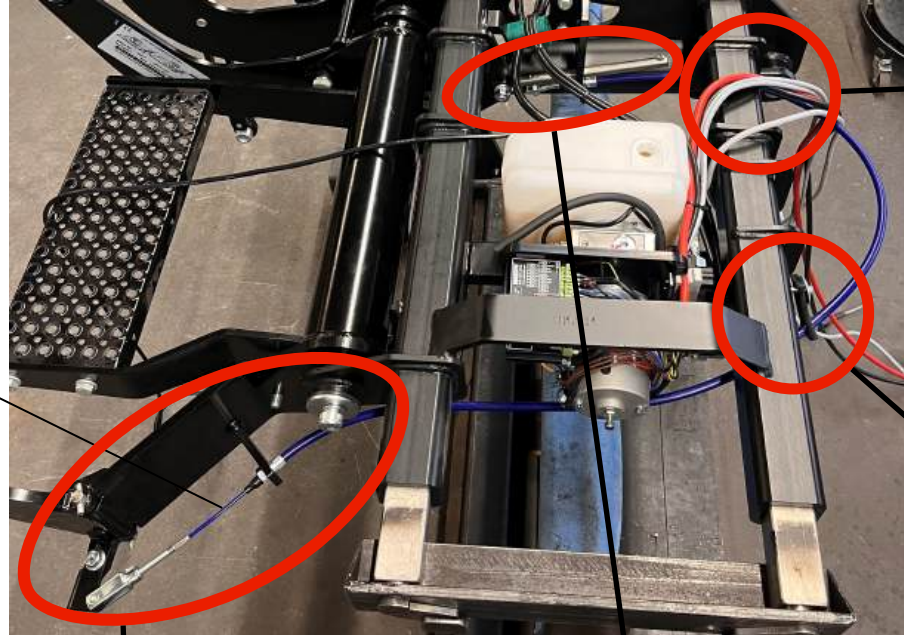


Tilt Stake: 17.72in (450mm) / 20.28in (515mm)



GPC X1 LDF

Support arm with folding and unfolding automation, Bowden cable routing.



S 20 909 524 Brake Cable
S 80 000 204
S 20 904 859 Cable Clamp

S 20 909 524 Brake Cable

S 20 906 877 Puling Spring



S 20 909 524 Brake Cable
S 20 907 456
S 20 909 601 Rubber Holder
S 80 000 221



S 20 909 561 Shaft
S 20 905 770 Roll Pin
S 21 909 537 Holder



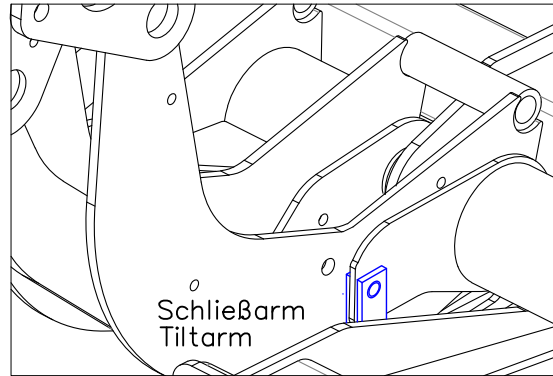
S 20 909 560 Handrail
S 21 909 539 Fitting



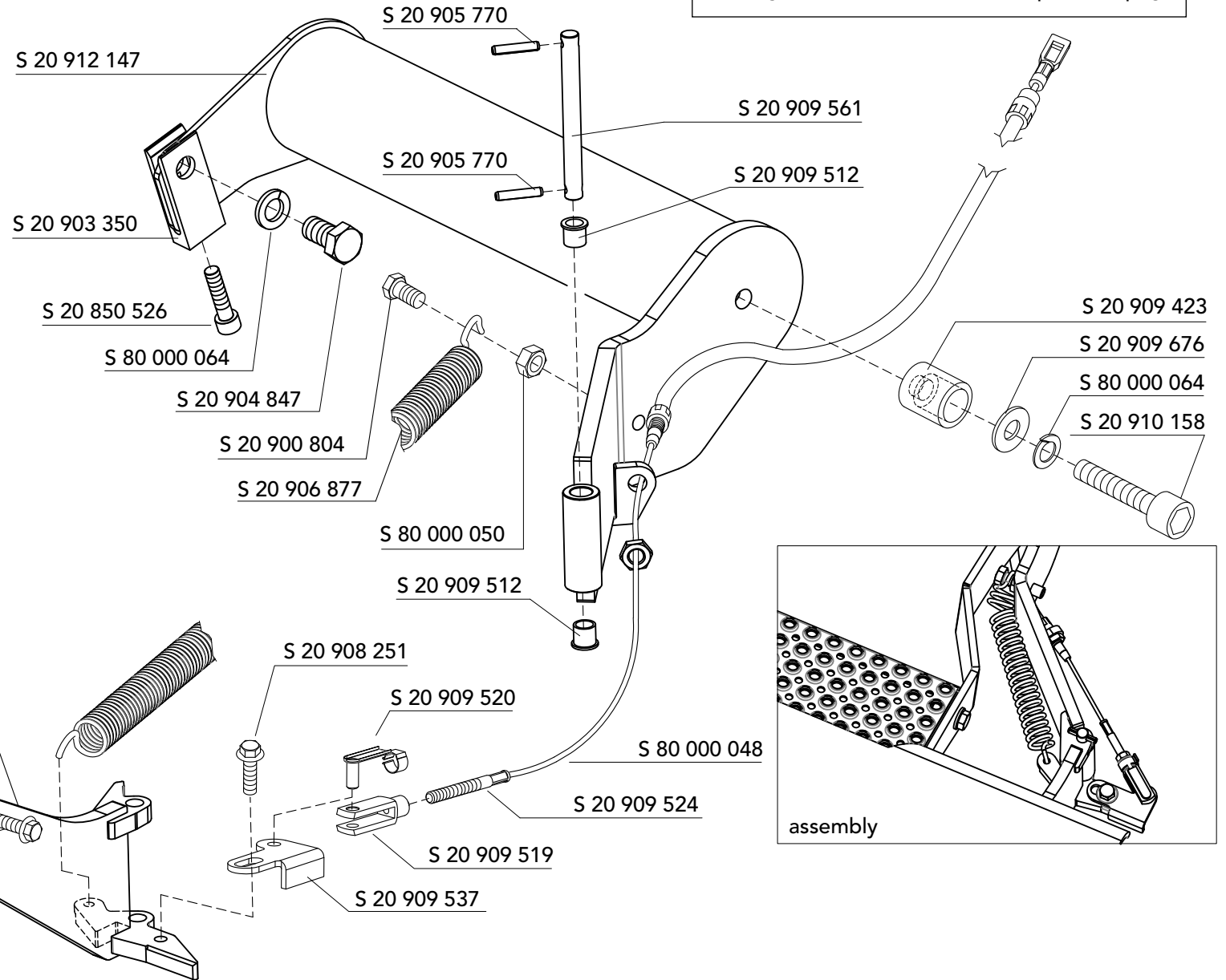
S 21 912 146 Support Arm for 17.72in
S 21 912 151 Support Arm for 20.28in

Support arm and Brake Cable

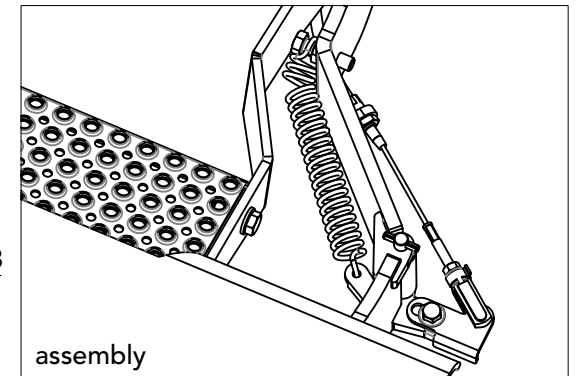
Routing of the Bowden cable, see previous page



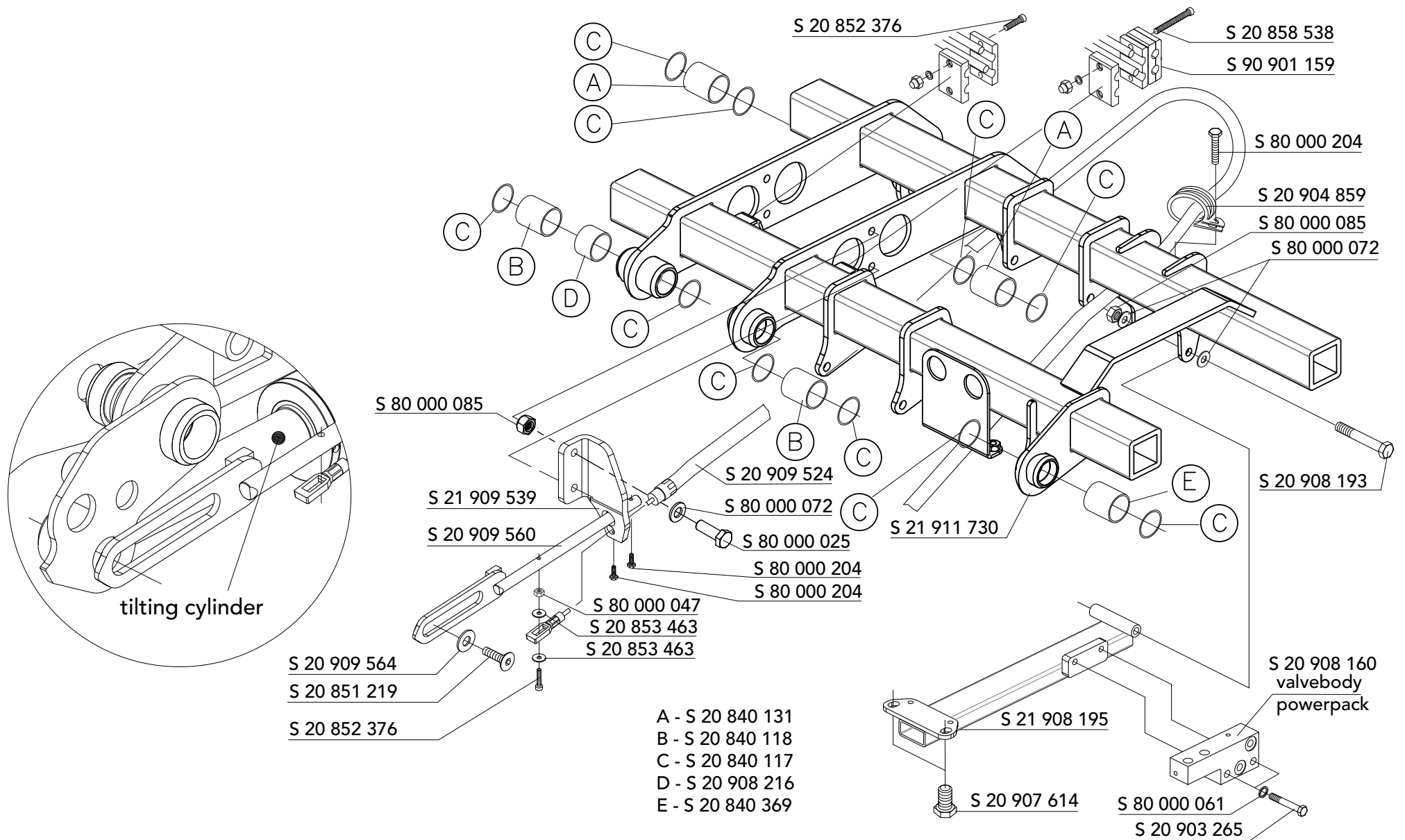
installation situation



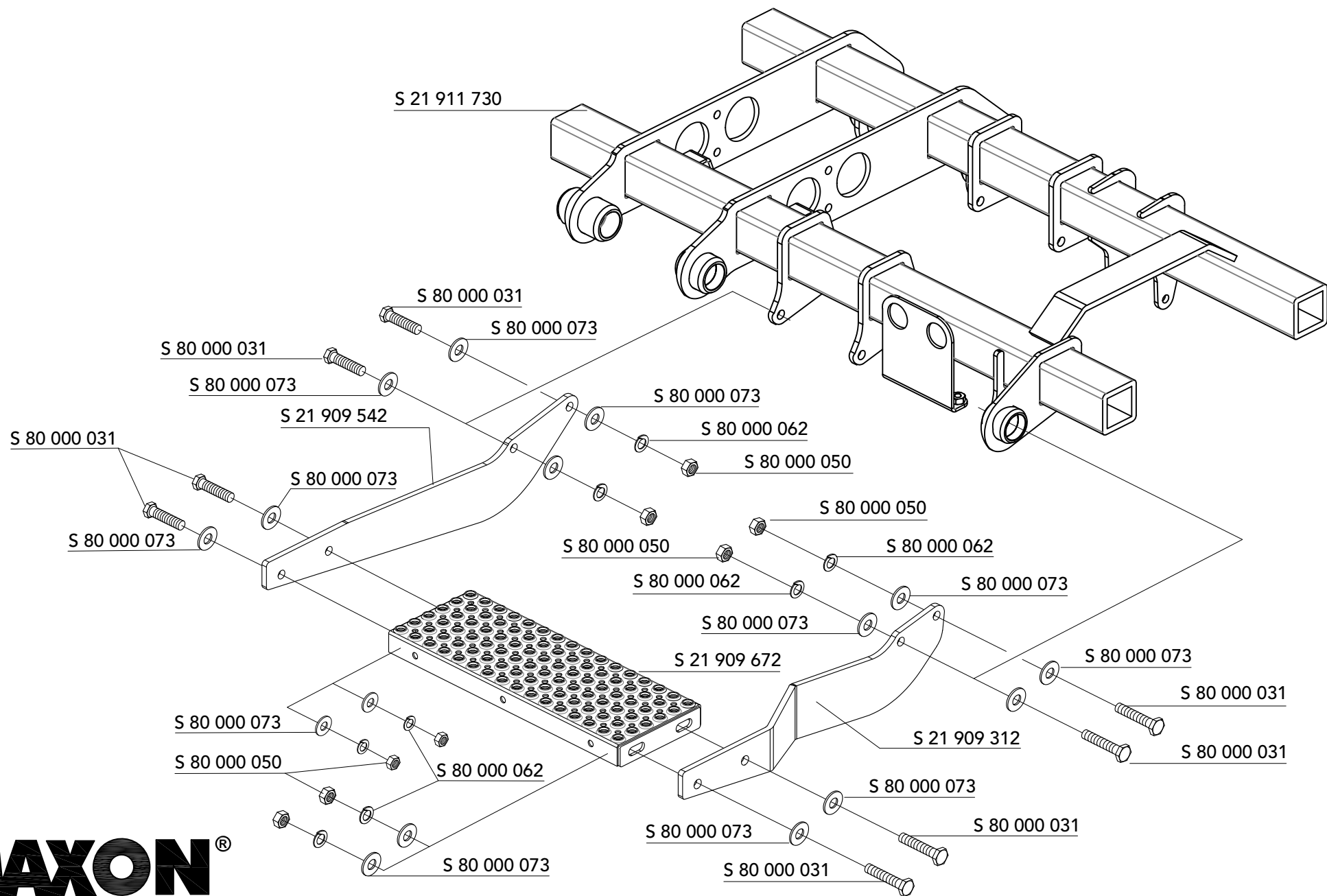
S 21 912 146 - for 17.72in
 S 21 909 591 - for 20.28in



Liftchassis, Brake Cable Completion from 2017 / 2018 Onwards

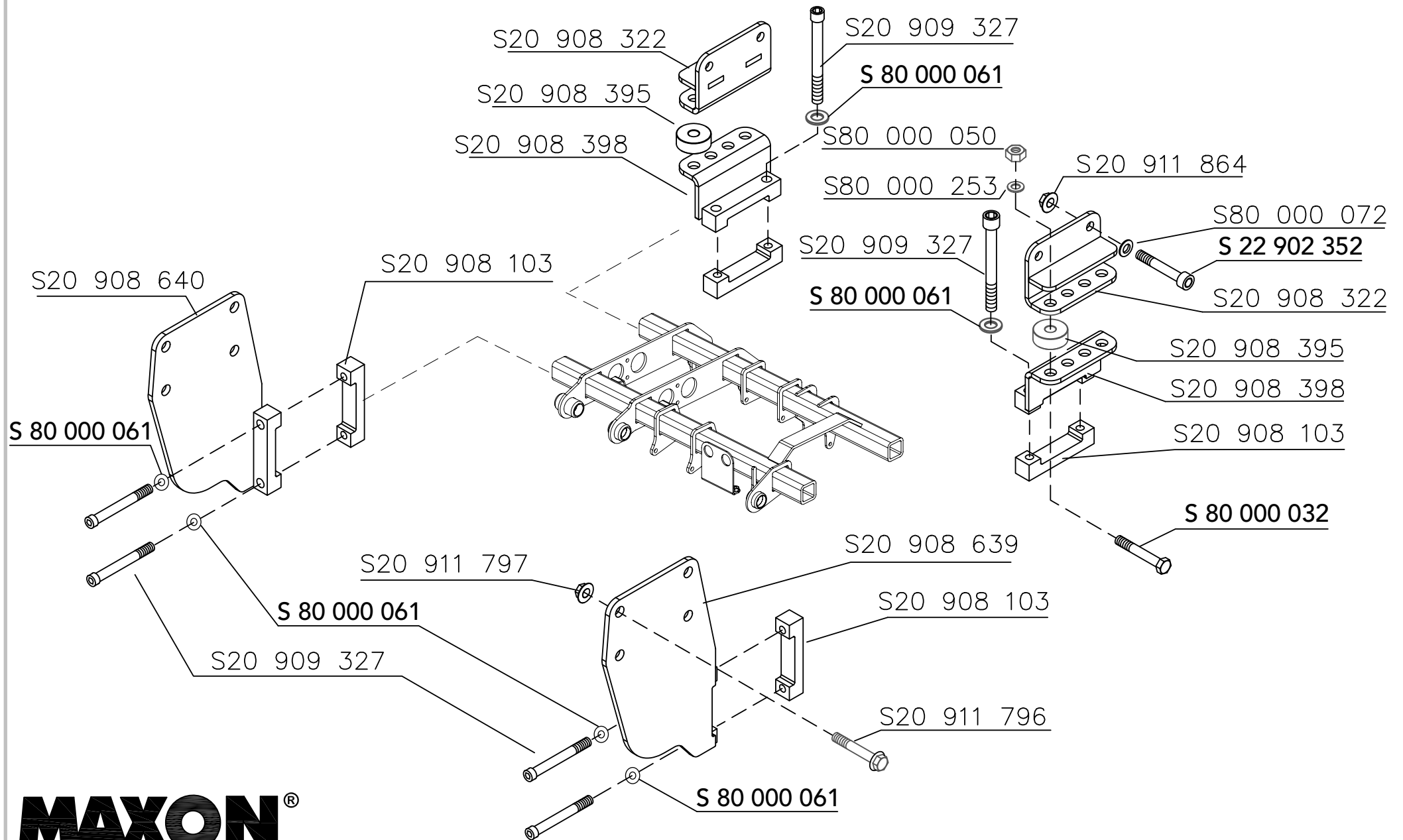


Lift Chassis Without Towing Ball Coupling - Completion from 2017 / 2028 Onwards



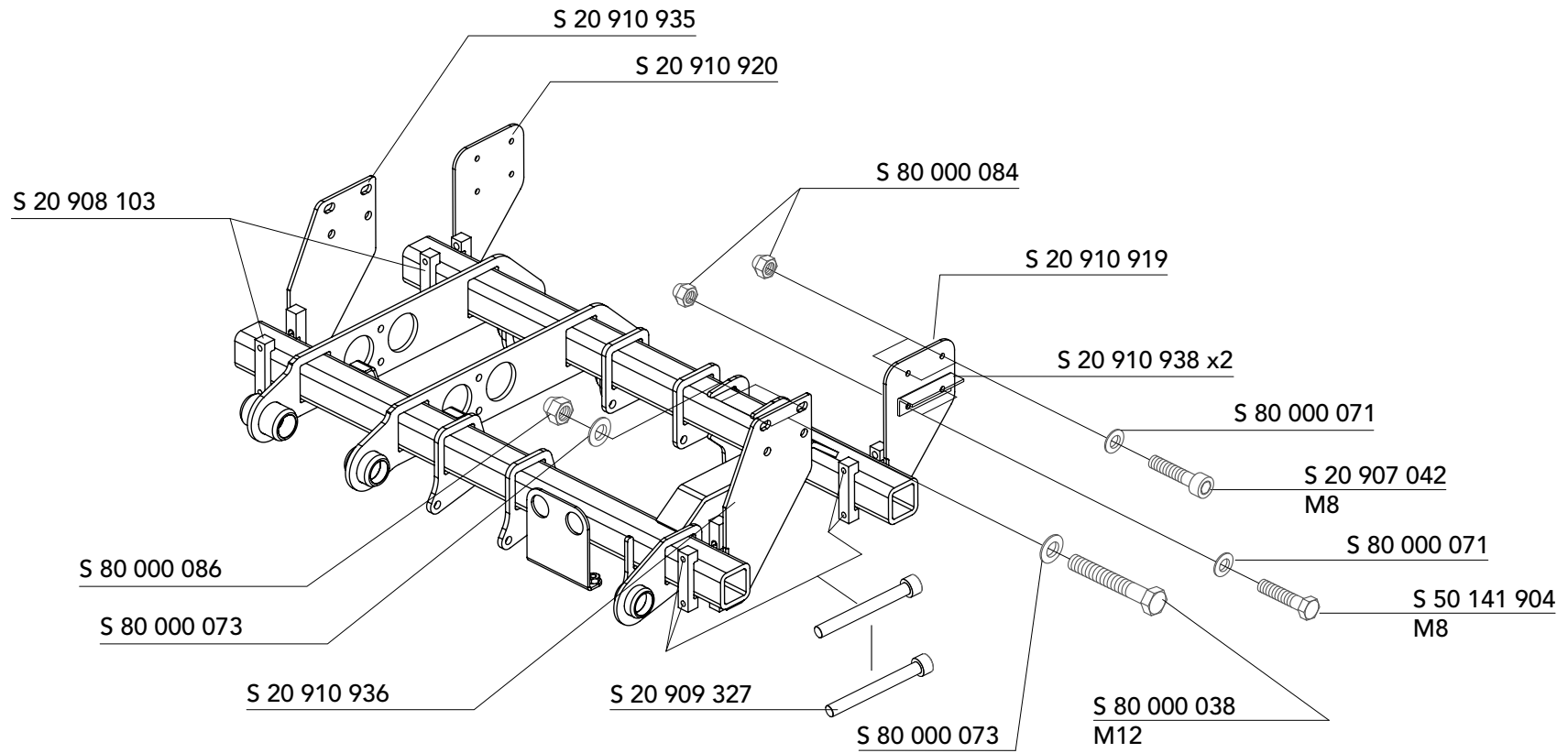
MAXON[®]

Installation Adapter for DB Sprinter / Sprinter EL (BM 907) and VW Crafter up to 2016

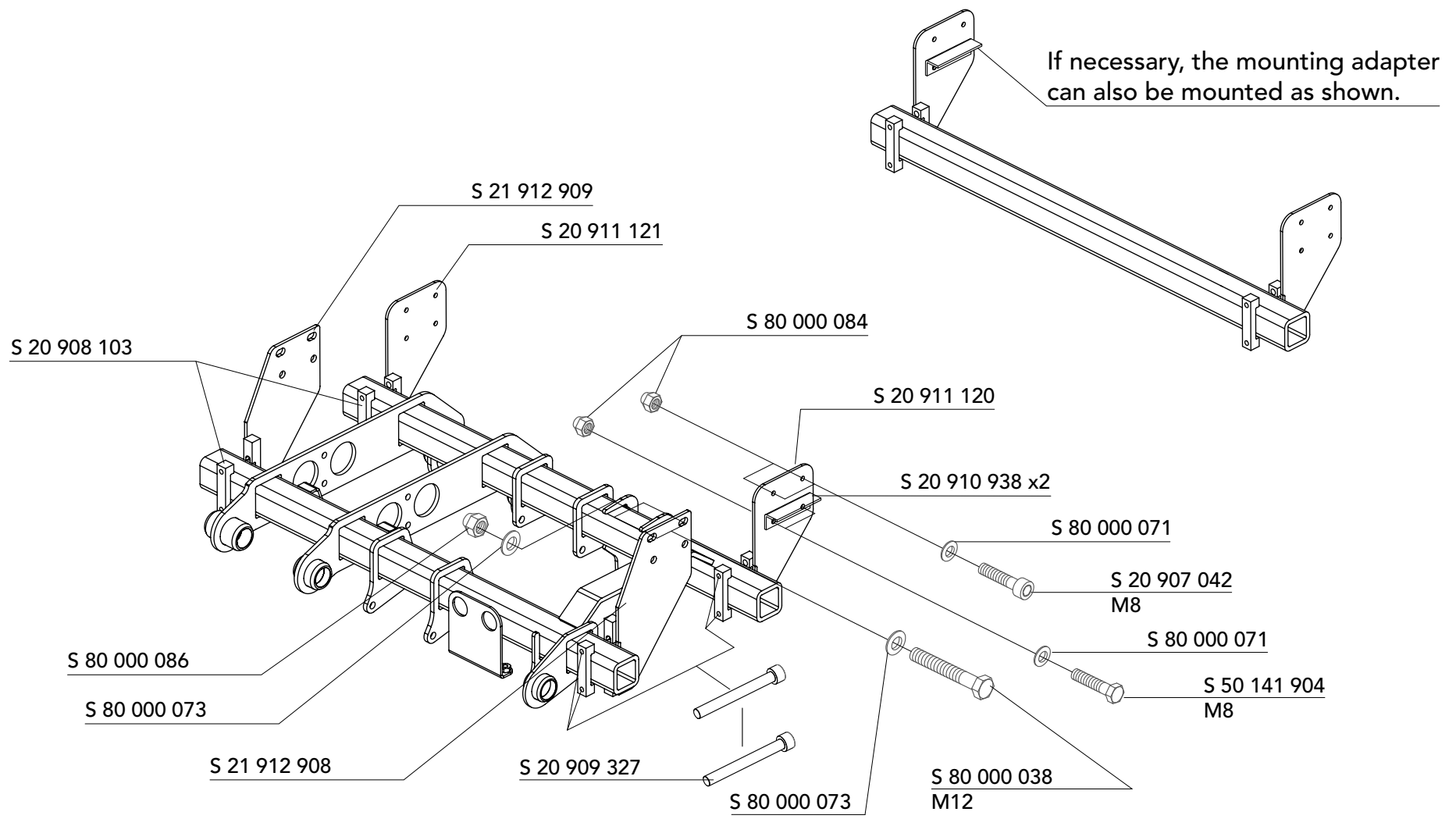


MAXON[®]

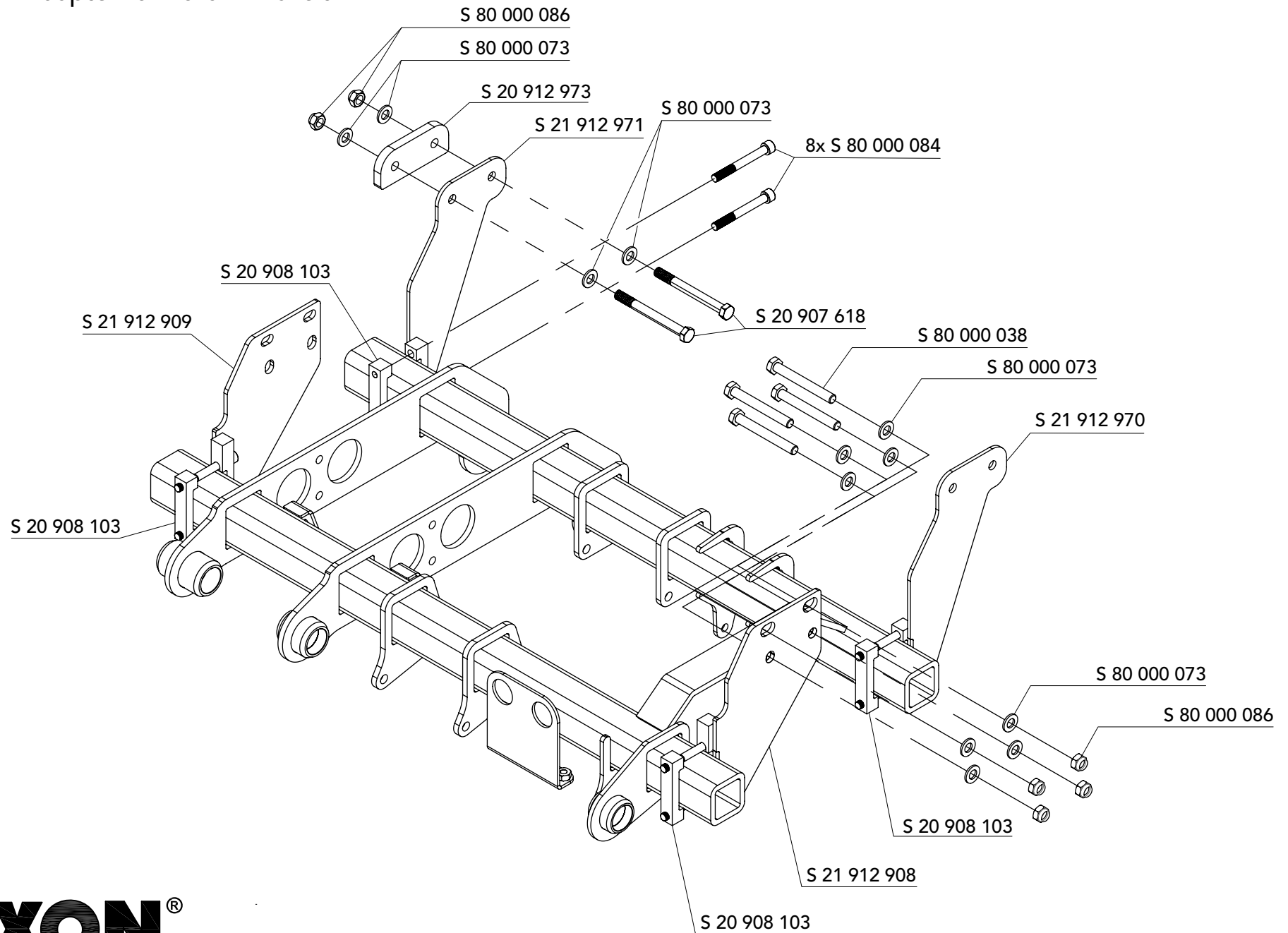
Installation Adapter for Ford Transit Year of Manufacture Since 2014
for Lifting 17" 11/16 or 450mm (Front-Wheel Drive)



Installation Adapter for Ford Transit Year of Manufacture Since 2014
for Lifting 20" 9/32 or 515mm (Rear-Wheel-Drive)



Installation Adapter for Ford E-Transit

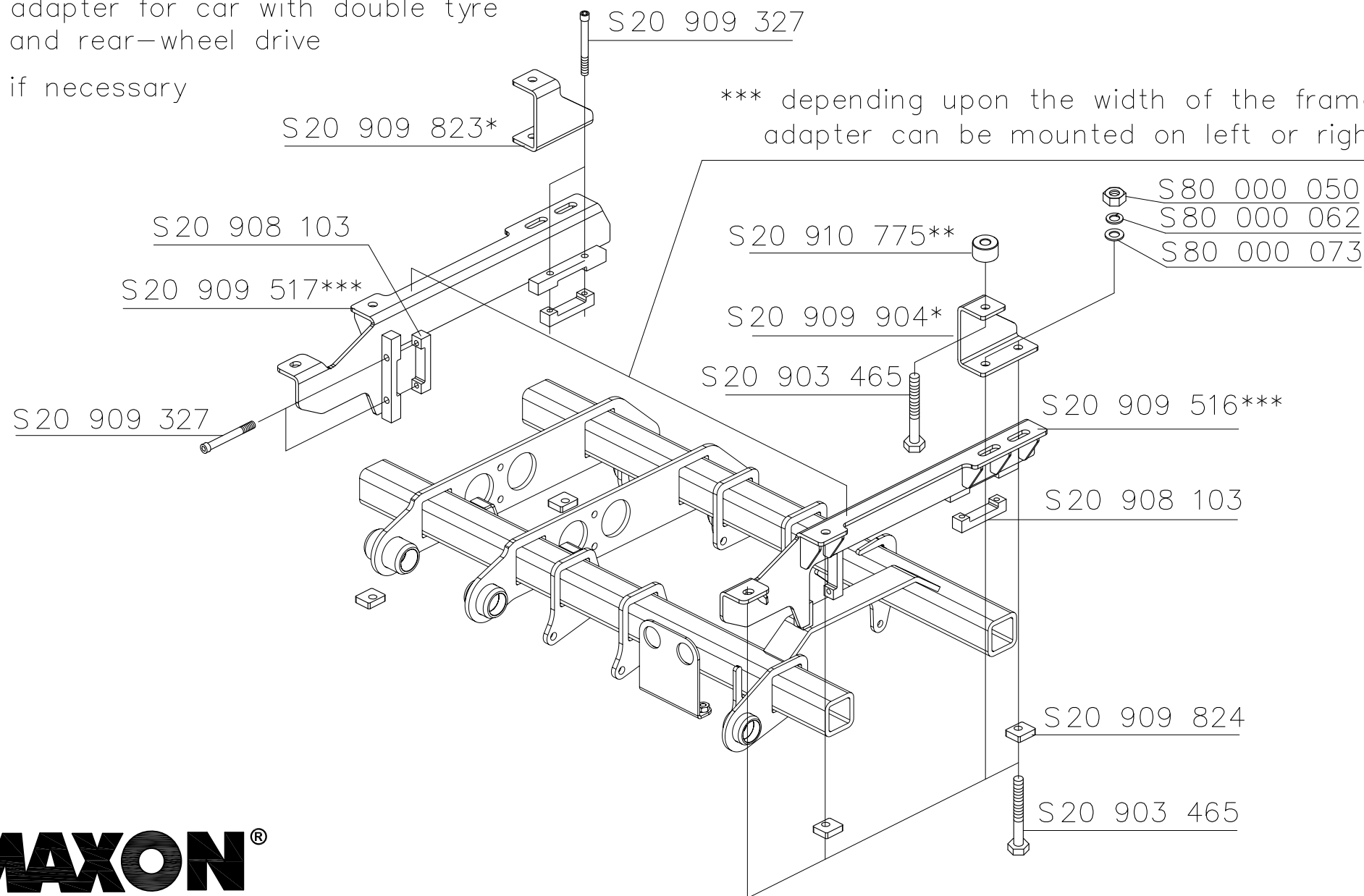


Installation Adapter Renault Master / Opel Movano up to 2021 / Nissan Interstar (Since Year 2010)

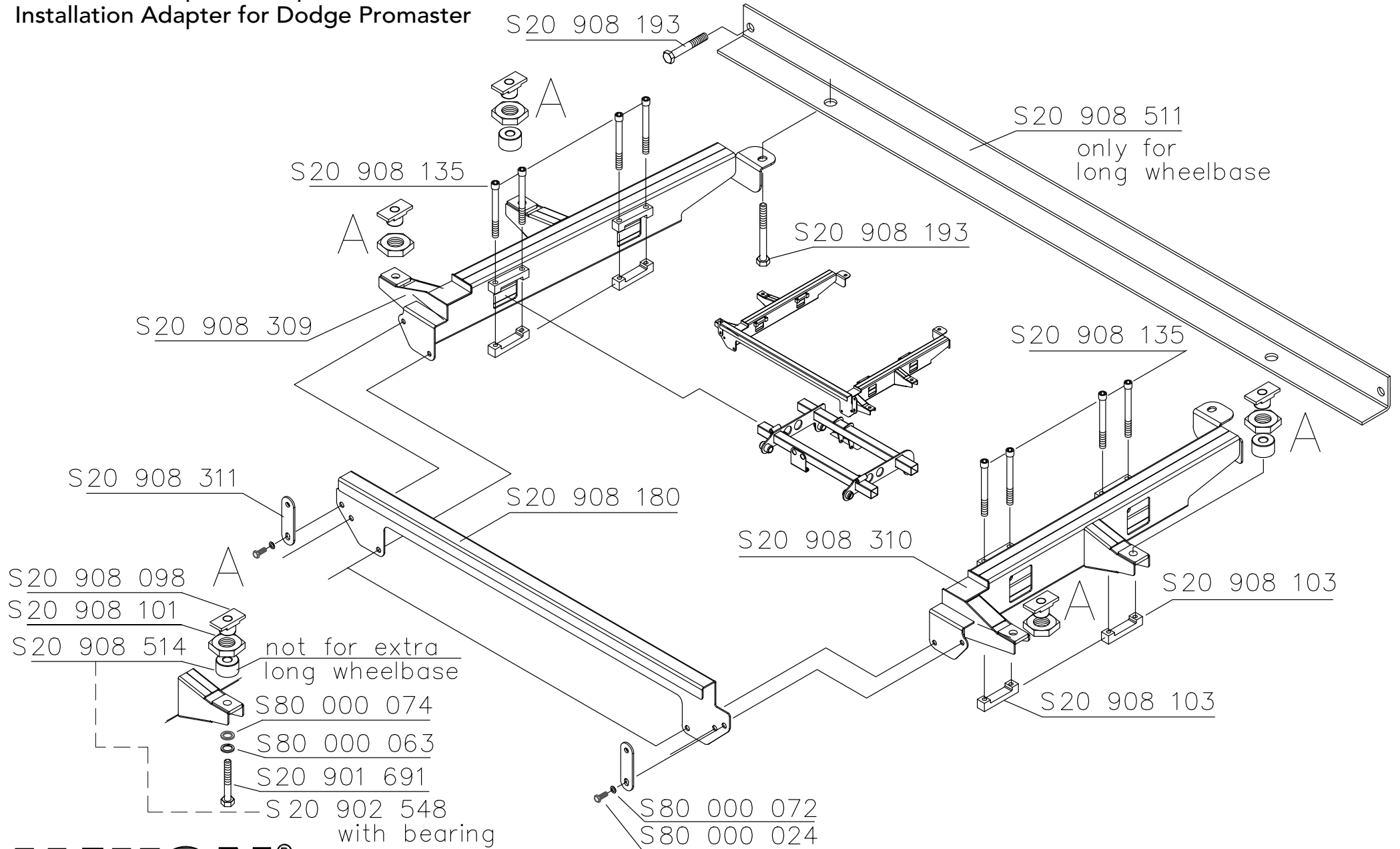
* adapter for car with double tyre and rear-wheel drive

** if necessary

*** depending upon the width of the frame adapter can be mounted on left or right side

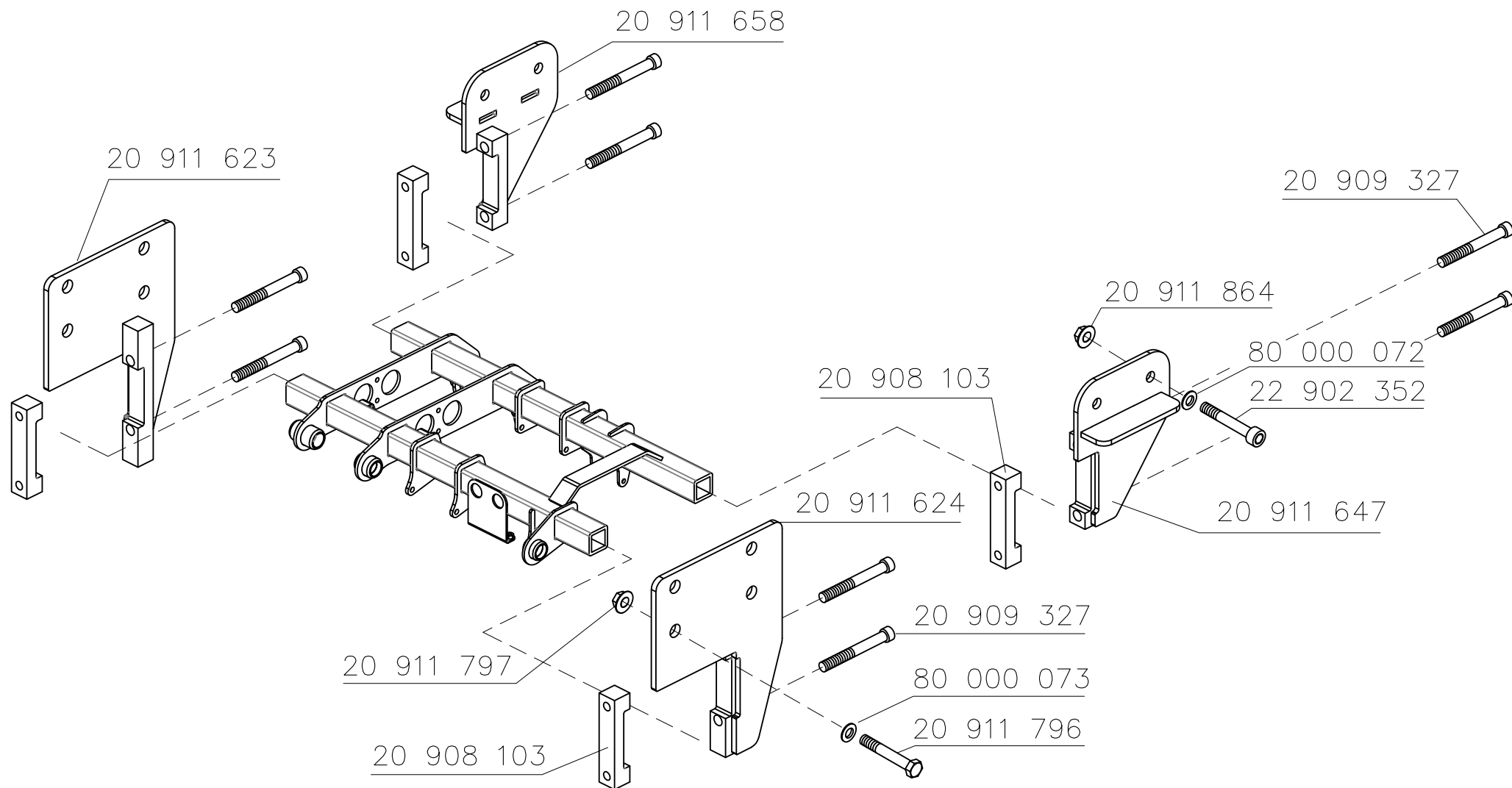


Installation Adapter for Opel Movano since 2022
 Installation Adapter for Dodge Promaster



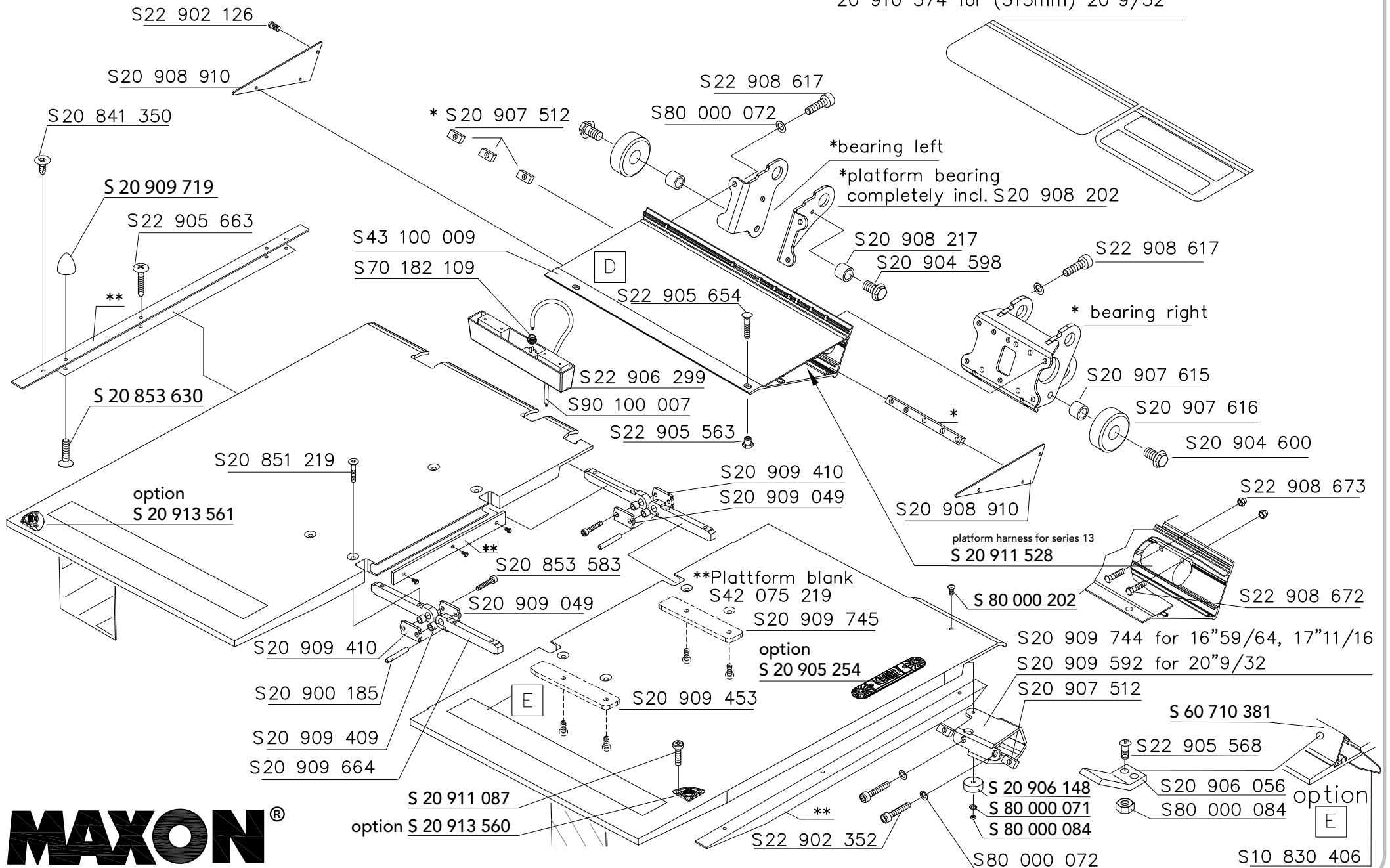
MAXON[®]

Installation Adapter for VW Crafter from 2017

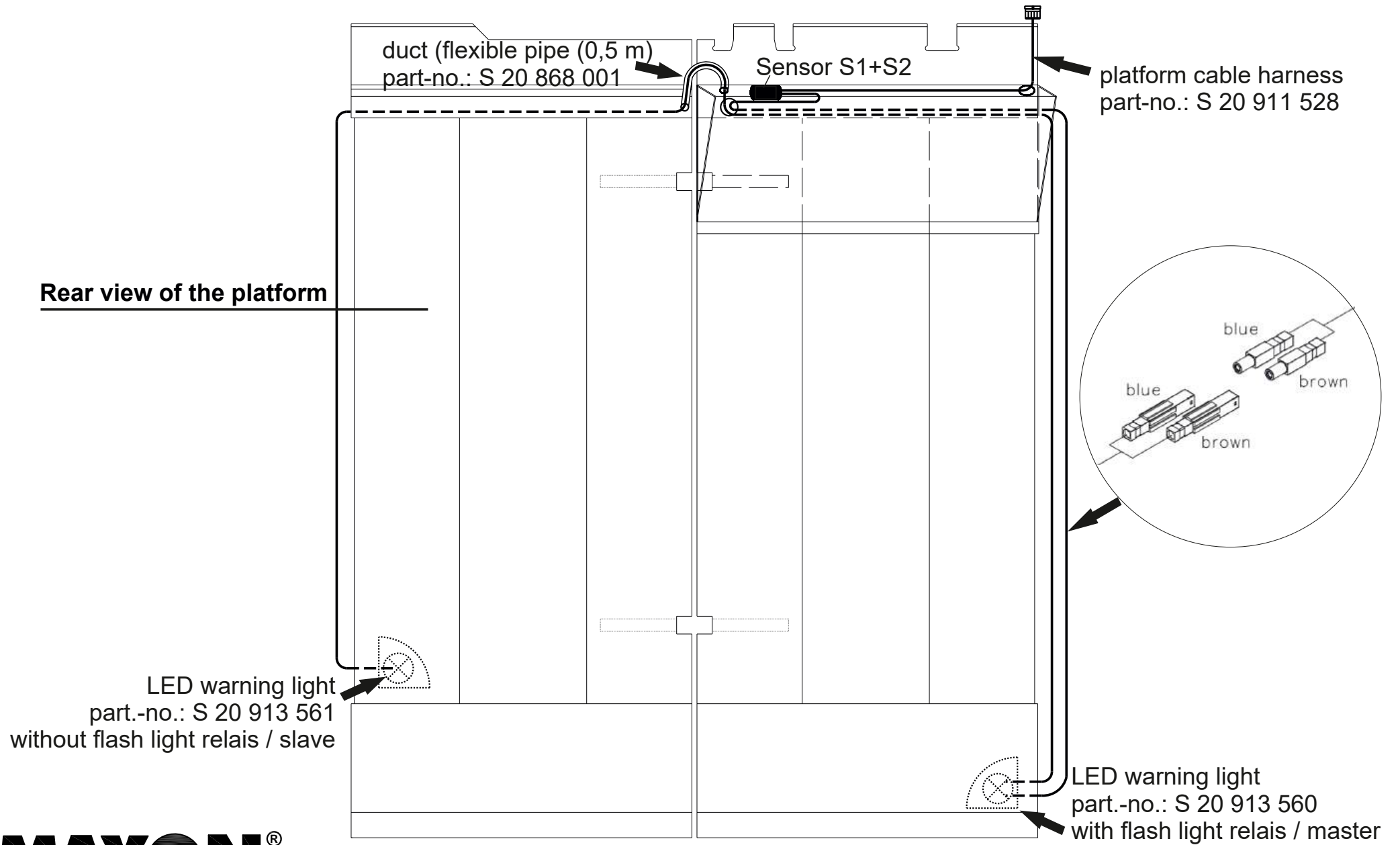


Platform

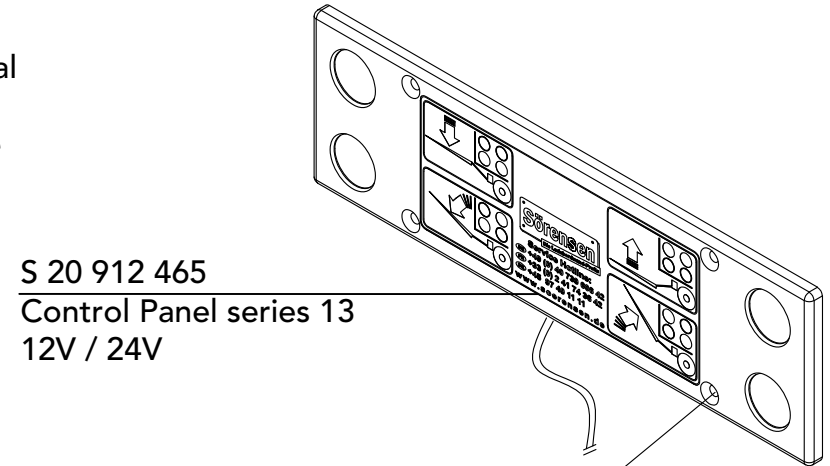
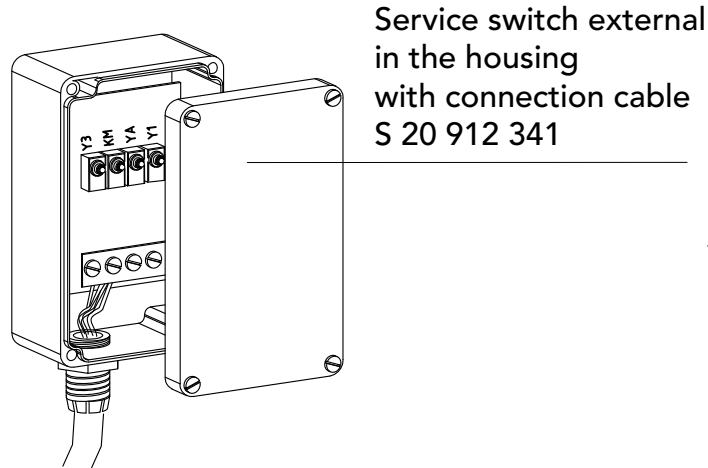
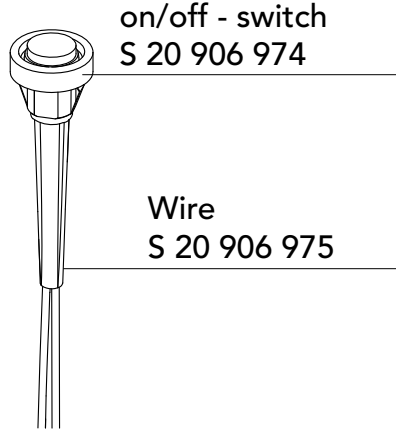
20 909 431 for (430mm, 450mm) 16"59/64, 17"11/16
 20 910 374 for (515mm) 20"9/32



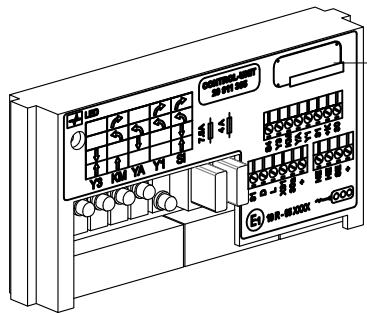
GPC X1 LDF Platform Cable Harness Part-No. S 20 911 528, Series 13



Control Unit



Screw
S 20 910 059

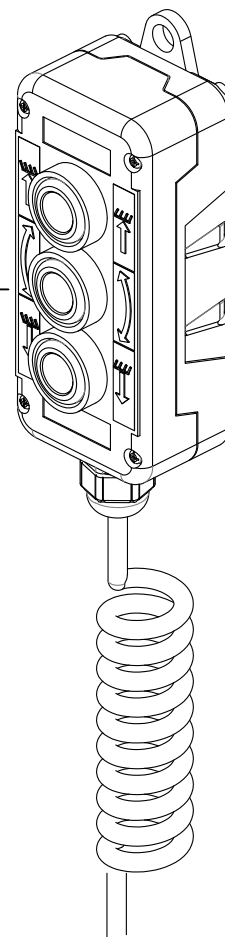


S 20 912 640 cover for Control-Unit series 13
S 20 913 075 without illustration: wiring harness for Control-Unit series 13
S 20 911 359 without illustration: harness Control-Unit to powerpack

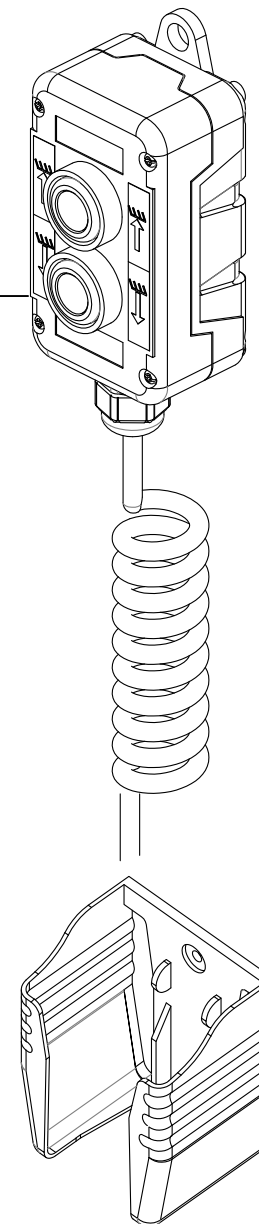
MAXON®

Hand Held Control

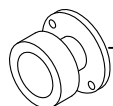
3 - button -
cabled remote
S 20 911 191



2 - button -
cabled remote
S 20 911 190



spare parts:



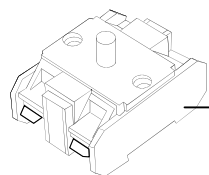
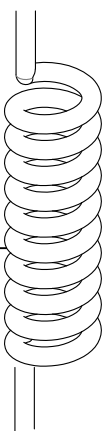
push button

White S 22 905 778

Grey S 22 905 779

Black S 22 905 780

cable spirale
S 22 905 781



contact

S 22 905 782

MAXON®

Radio Control Remote

Radio control remote all incl. S 20 910 477



remote control S 22 908 748

MAXON®

S 20 913 073 Powerpack 12 Volt

