

To search for your Maxon parts in this document, press Ctrl + F for Windows or Command + F for macOS to open the Search Box.



This parts manual covers all TE-20's manufactured **November 2017 to December 2020**. If your model is older then please contact Maxon CS at 800.227.4116 or [parts@maxonlift.com](mailto:parts@maxonlift.com).

# TUK-A-WAY® TE-20

# PARTS BREAKDOWN



STEP KITS

- DUAL  
JAN 2018 TO DEC 2020  
NOV 2017 TO DEC 2017
- SINGLE  
JAN 2018 TO DEC 2020  
NOV 2017 TO DEC 2017
- FLEXIBLE  
JAN 2018 TO DEC 2020  
NOV 2017 TO DEC 2017

EXTENSION PLATE ASSEMBLY

- BOLT ON
- WELD ON

MAIN ASSEMBLY

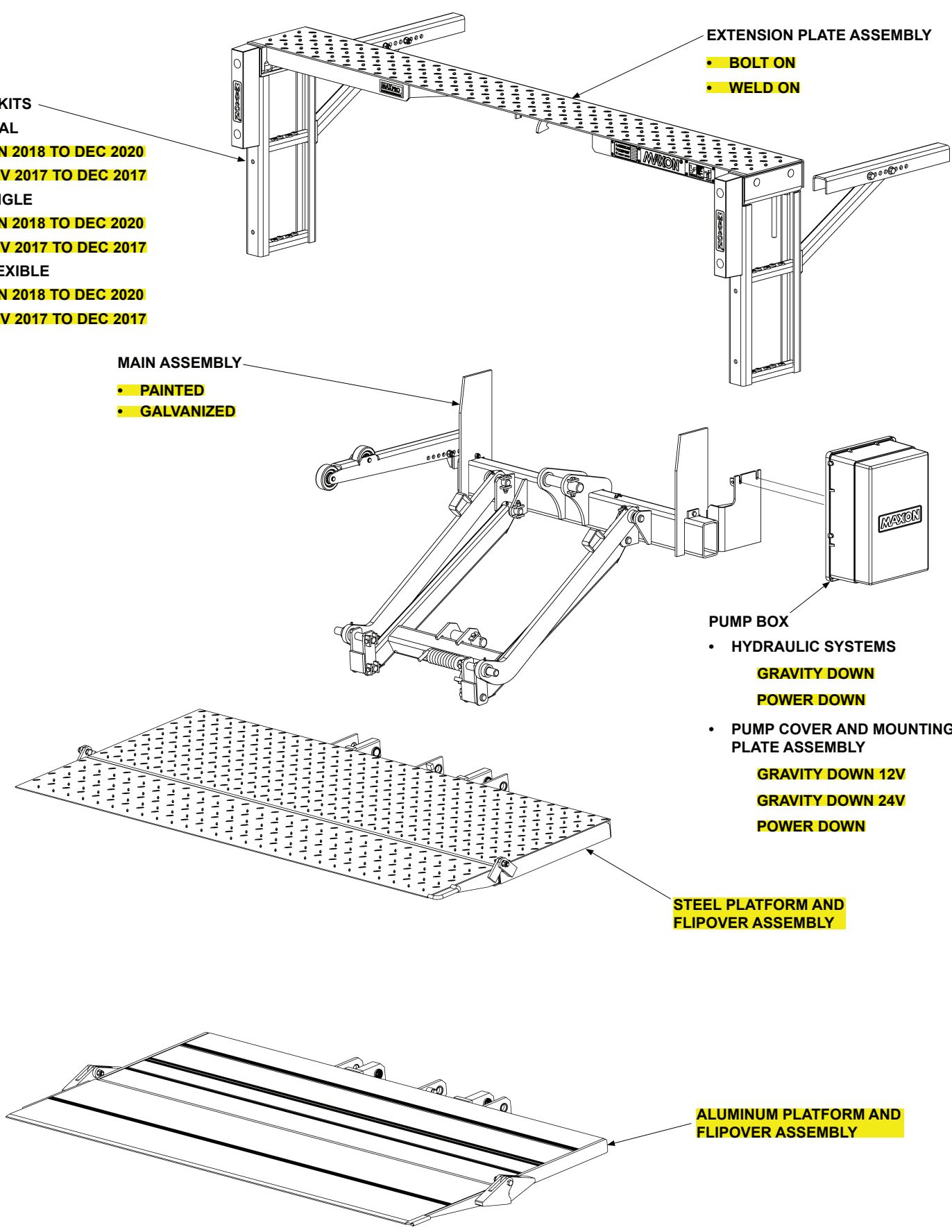
- PAINTED
- GALVANIZED

PUMP BOX

- HYDRAULIC SYSTEMS  
GRAVITY DOWN  
POWER DOWN
- PUMP COVER AND MOUNTING  
PLATE ASSEMBLY  
GRAVITY DOWN 12V  
GRAVITY DOWN 24V  
POWER DOWN

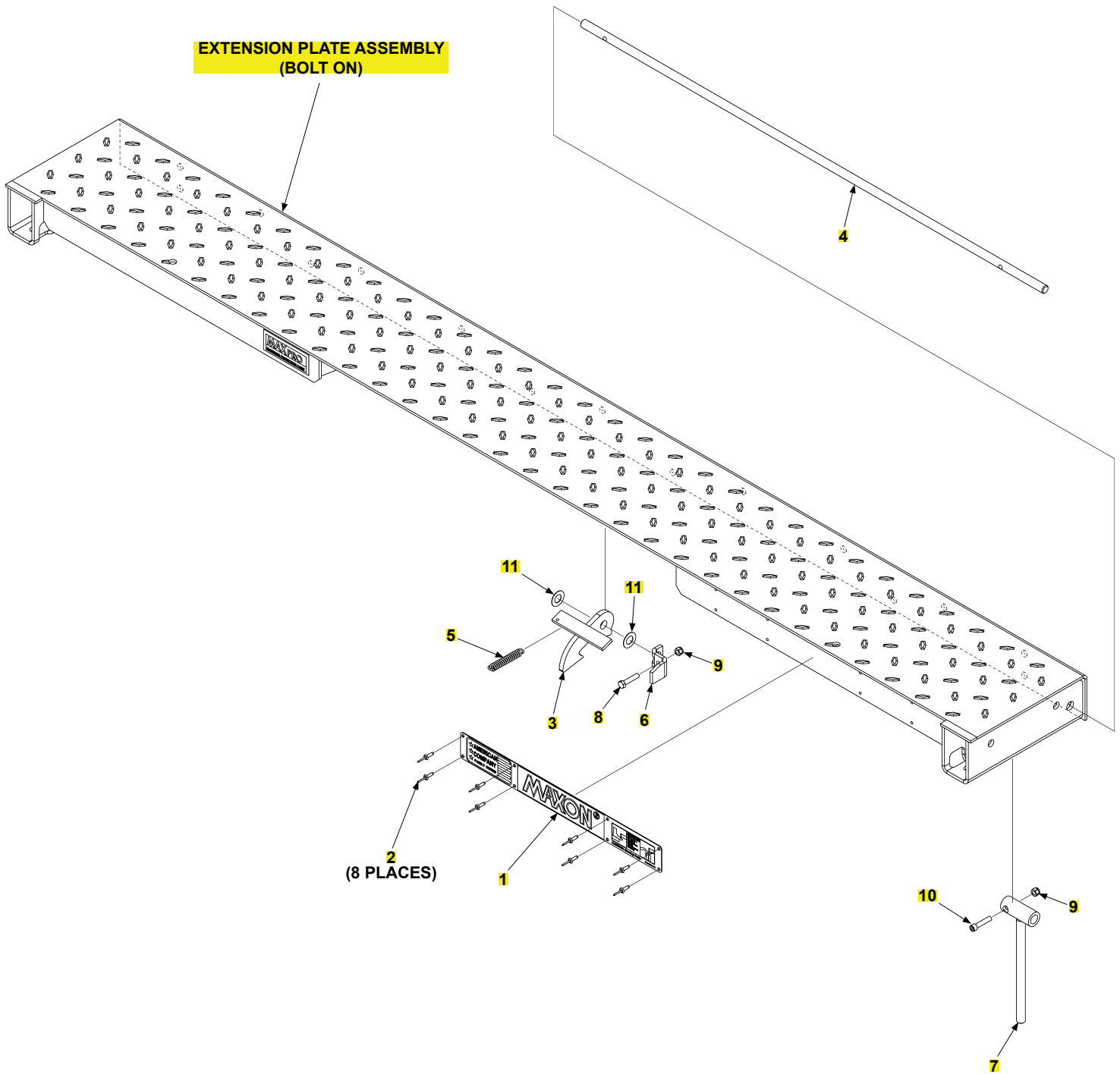
STEEL PLATFORM AND  
FLIPOVER ASSEMBLY

ALUMINUM PLATFORM AND  
FLIPOVER ASSEMBLY



# EXTENSION PLATE ASSEMBLY (BOLT ON)

LAST UPDATED  
MAY 2017 to DEC 2020

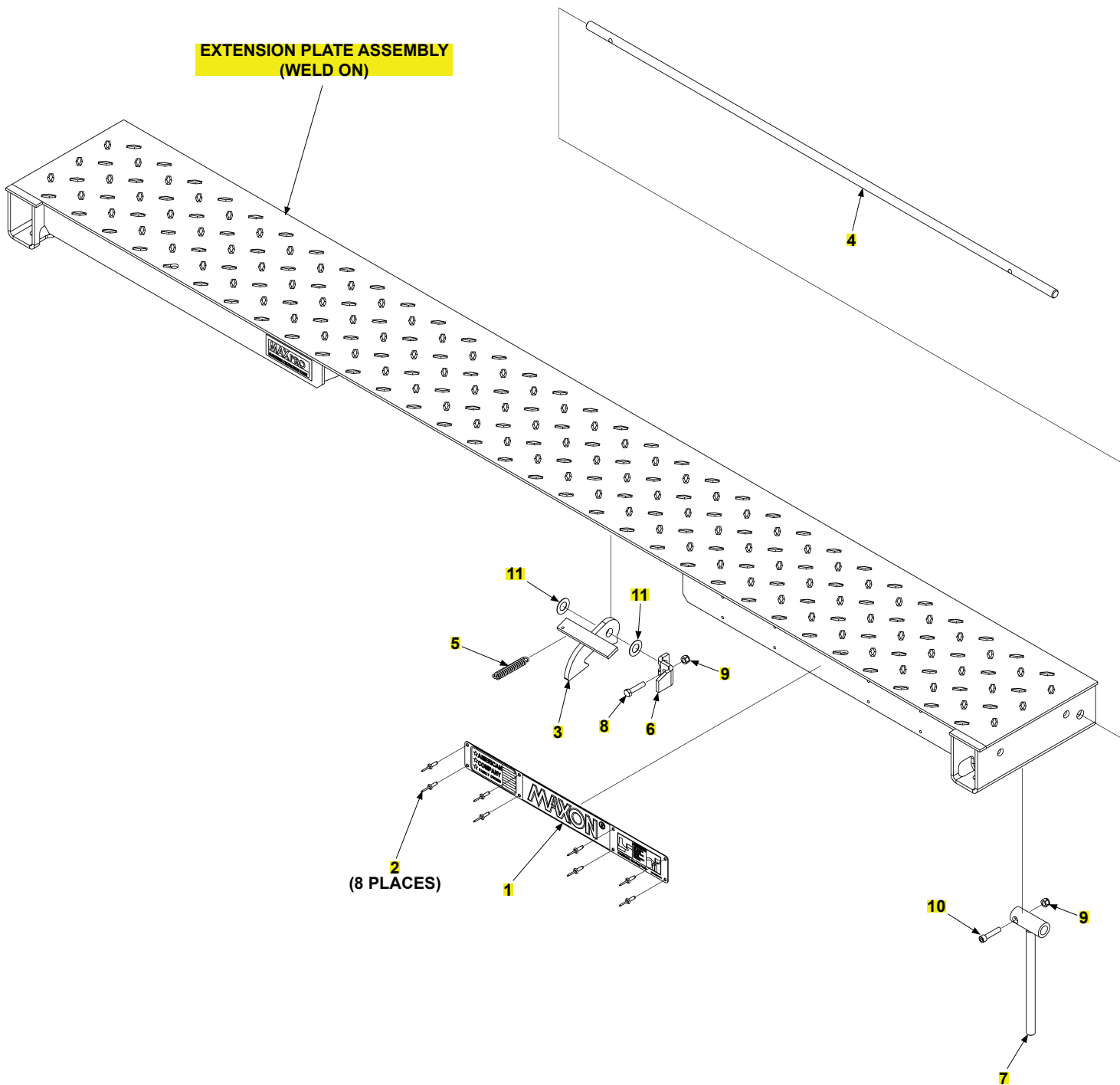


**EXTENSION PLATE ASSEMBLY (BOLT ON)**

ITEM	QTY.	PART NO.	DESCRIPTION
REF	1	297260-01	EXT PL ASSY,STD TUKS,96",BOLT ON
		297260-01G	EXT PL ASSY,STD TUKS,96",BOLT ON,G
		297260-02	EXT PL ASSY,STD TUKS,102",BOLT ON
		297260-02G	EXT PL ASSY,STD TUKS,102",BOLT ON,G
1	1	280004-01	PLATE, MAXON NAME & DECALS
2	8	904005-2	RIVET,BLIND SSTL DOME. 187X.565
3	1	298168-01	SAFETY HOOK WLDM'T
4	1	297256-01	BAR,HOOK RELEASE,46" LG
		297256-02	BAR,HOOK RELEASE,49" LG
5	1	215345	SPRING, EXTENTION, .093 X 2.50
6	1	297768-01	BRKT LEVER
7	1	297769-01	HANDLE WLDM'T
8	1	900009-6	SCREW, CAP .31-18X1.5 G8 ZC
9	2	901001	NUT,NYLON 5/16-18 ZINC
10	1	900726-08	SCREW, SOC HD CAP, .312 X 1.5
11	2	902000-17	WASHER, FLAT .625 .032 THK

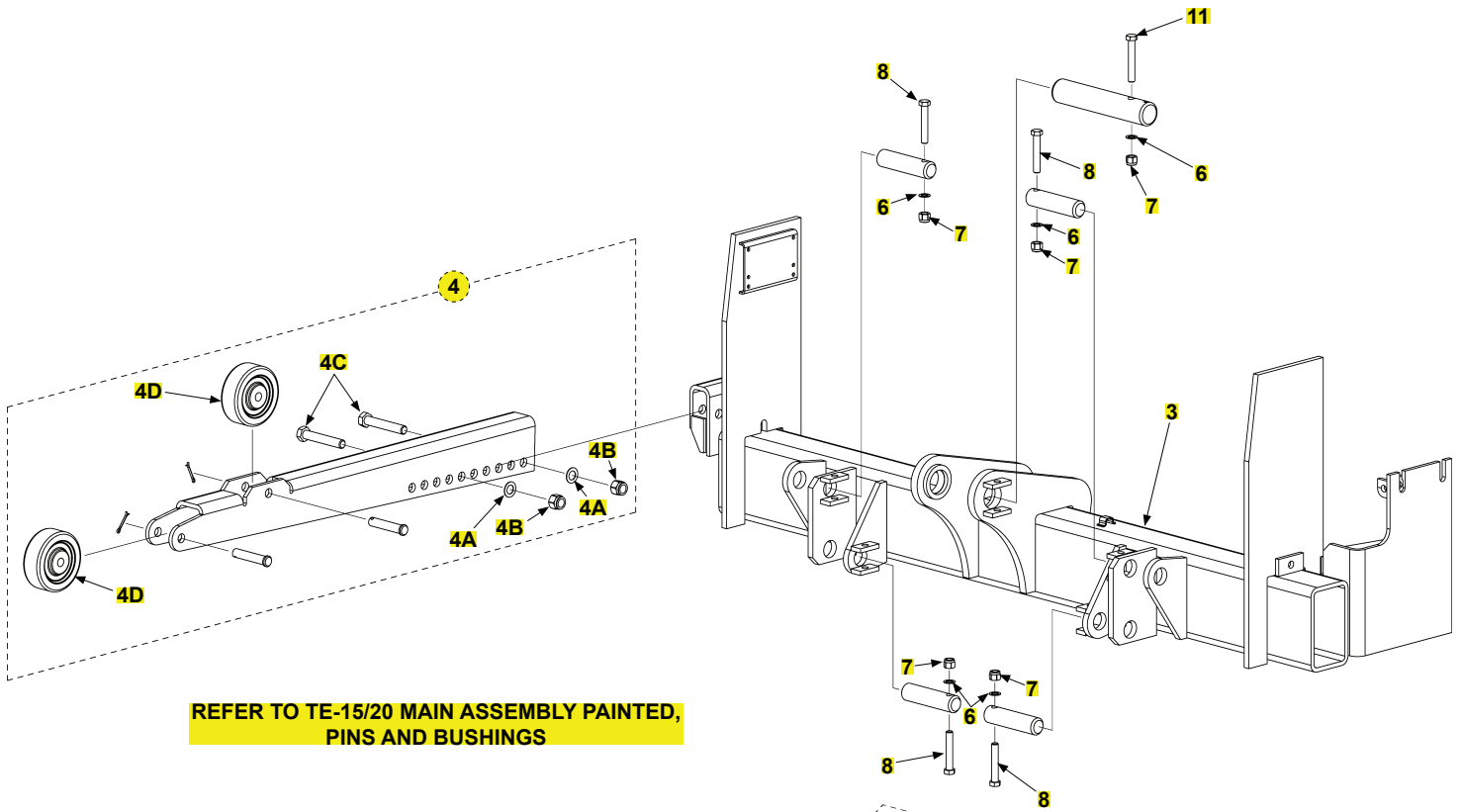
# EXTENSION PLATE ASSEMBLY (WELD ON)

LAST UPDATED  
MAY 2017 to DEC 2020

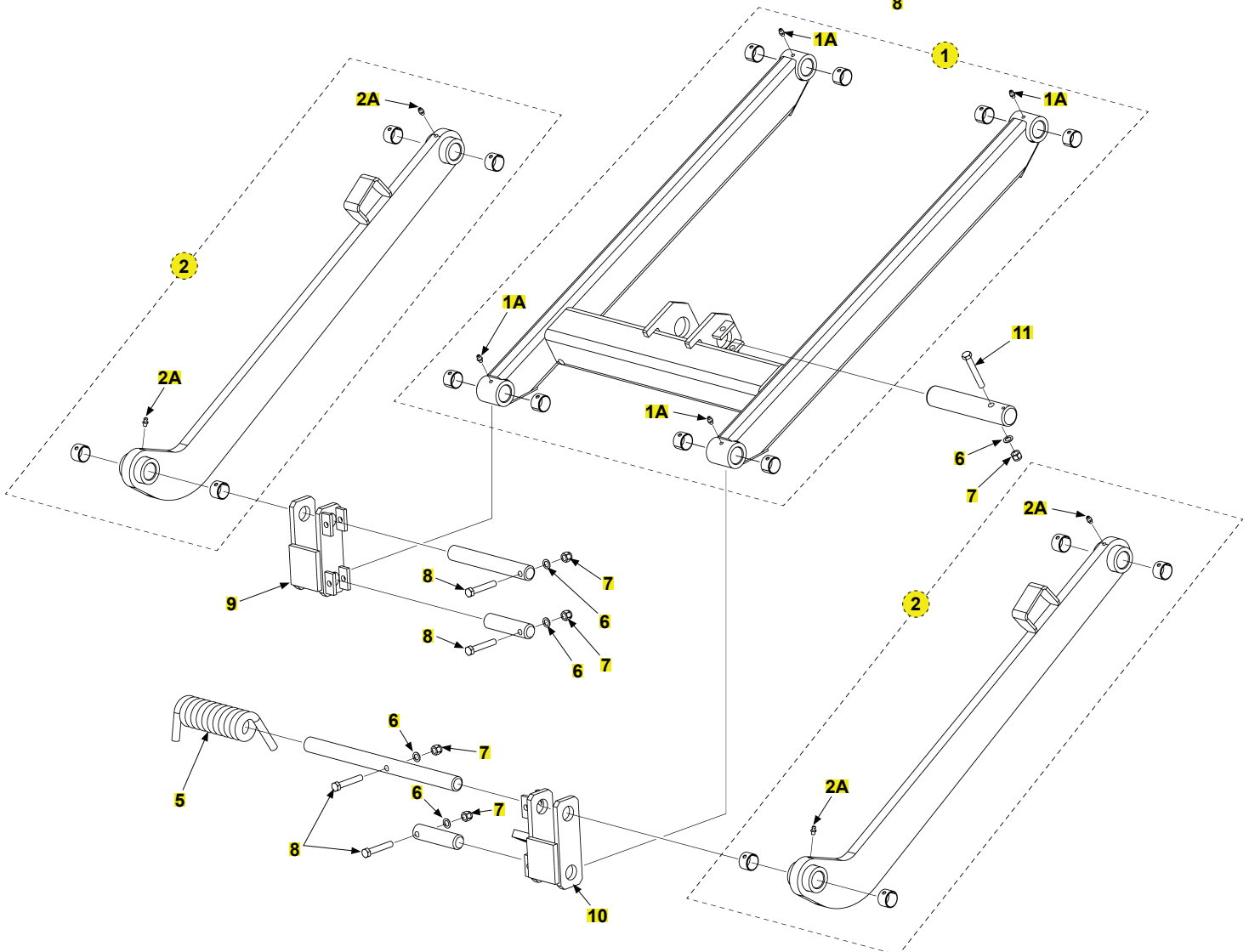


**EXTENSION PLATE ASSEMBLY (WELD ON)**

ITEM	QTY.	PART NO.	DESCRIPTION
REF	1	297264-01	EXT PL ASSY,STD TUKS,96",WELD ON
		297264-02	EXT PL ASSY,STD TUKS,102",WELD ON
1	1	280004-01	PLATE, MAXON NAME & DECALS
2	8	904005-2	RIVET,BLIND SSTL DOME.187X.565
3	1	298168-01	SAFETY HOOK WLDM'T
4	1	297256-01	BAR,HOOK RELEASE,46" LG
		297256-02	BAR,HOOK RELEASE,49" LG
5	1	215345	SPRING, EXTENTION, .093 X 2.50
6	1	297768-01	BRKT LEVER
7	1	297769-01	HANDLE WLDM'T
8	1	900009-6	SCREW, CAP .31-18X1.5 G8 ZC
9	2	901001	NUT,NYLON 5/16-18 ZINC
10	1	900726-08	SCREW, SOC HD CAP, .312 X 1.5
11	2	902000-17	WASHER, FLAT .625 .032 THK



REFER TO TE-15/20 MAIN ASSEMBLY PAINTED,  
PINS AND BUSHINGS



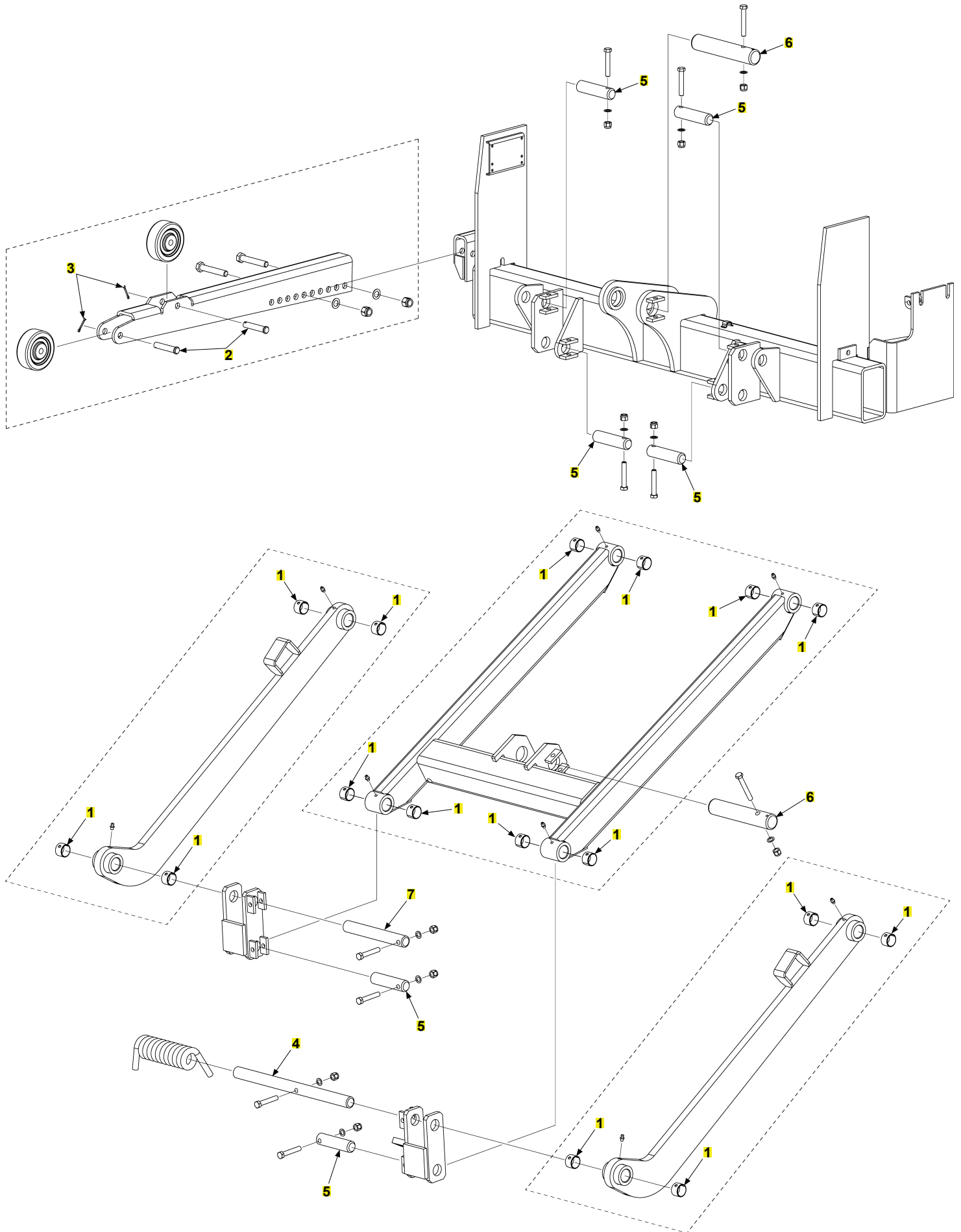
**TE-15/20 MAIN ASSEMBLY PAINTED**

ITEM	QTY.	PART NO.	DESCRIPTION
1	1	286009-01	LIFT FRAME ASSY
1A	4	224342	FITTING, GREASE 1/4"SELF DRILL
2	2	286007-01	PARALLEL ARM ASSY
2A	4	224342	FITTING, GREASE 1/4"SELF DRILL
3	1	298030-01	MAIN FRAME ASSY,TE-15/TE-20
4	1	287060-01	KIT, OPENER, TUK-A-WAY
4A	2	902000-13	WASHER, FLAT .500 .032 THK
4B	2	901010	NUT, NYLON LOCK 1/2-13 ZC
4C	2	900035-9	SCREW,CAP HXHD.5-13UNC-2A 3.00
4D	2	280082-01	ROLLER, OPENER,3.5 X 1.25 X .5
5	1	286038-01	TORSION SPRING, RH HELIX
6	10	902000-9	WASHER, FLAT.375X.032 THK
7	10	901002	NUT, NYLON 3/8-16 ZINC
8	8	900014-9	SCREW,HEX CAP.38-16X2.25,G8,ZC
9	1	296872-08	SHACKLE WLDMT,HB,LH,4.13,NO SPRG BRKT
		296872-09	SHACKLE WLDMT,HB,LH,4.63,NO SPRG BRKT
10	1	296872-07	SHACKLE WLDMT,HB,RH,4.13
		296872-02	SHACKLE WLDMT,HB,RH,4.63
11	2	900014-18	SCREW,HEX CAP.38-16X2.75,G8,ZC



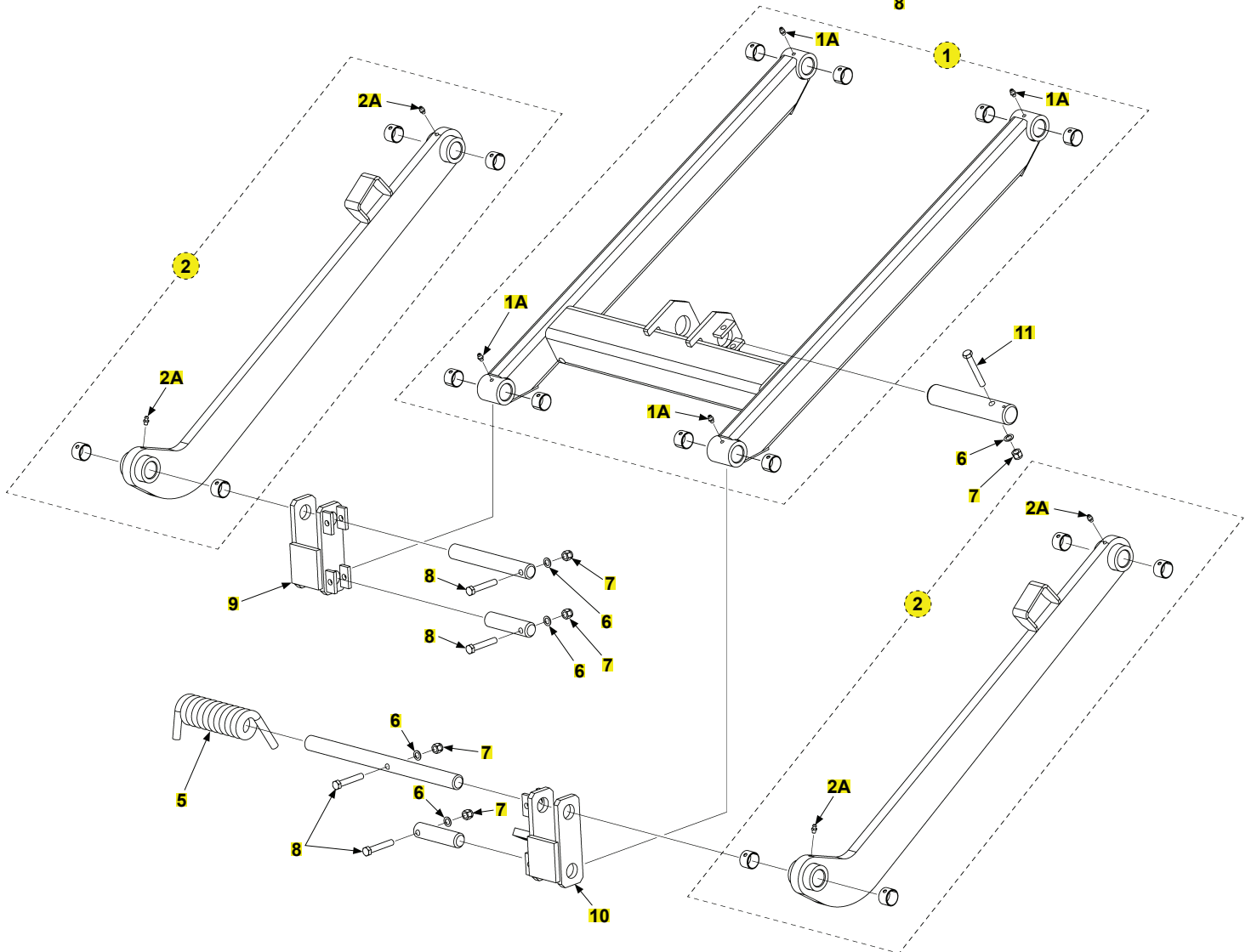
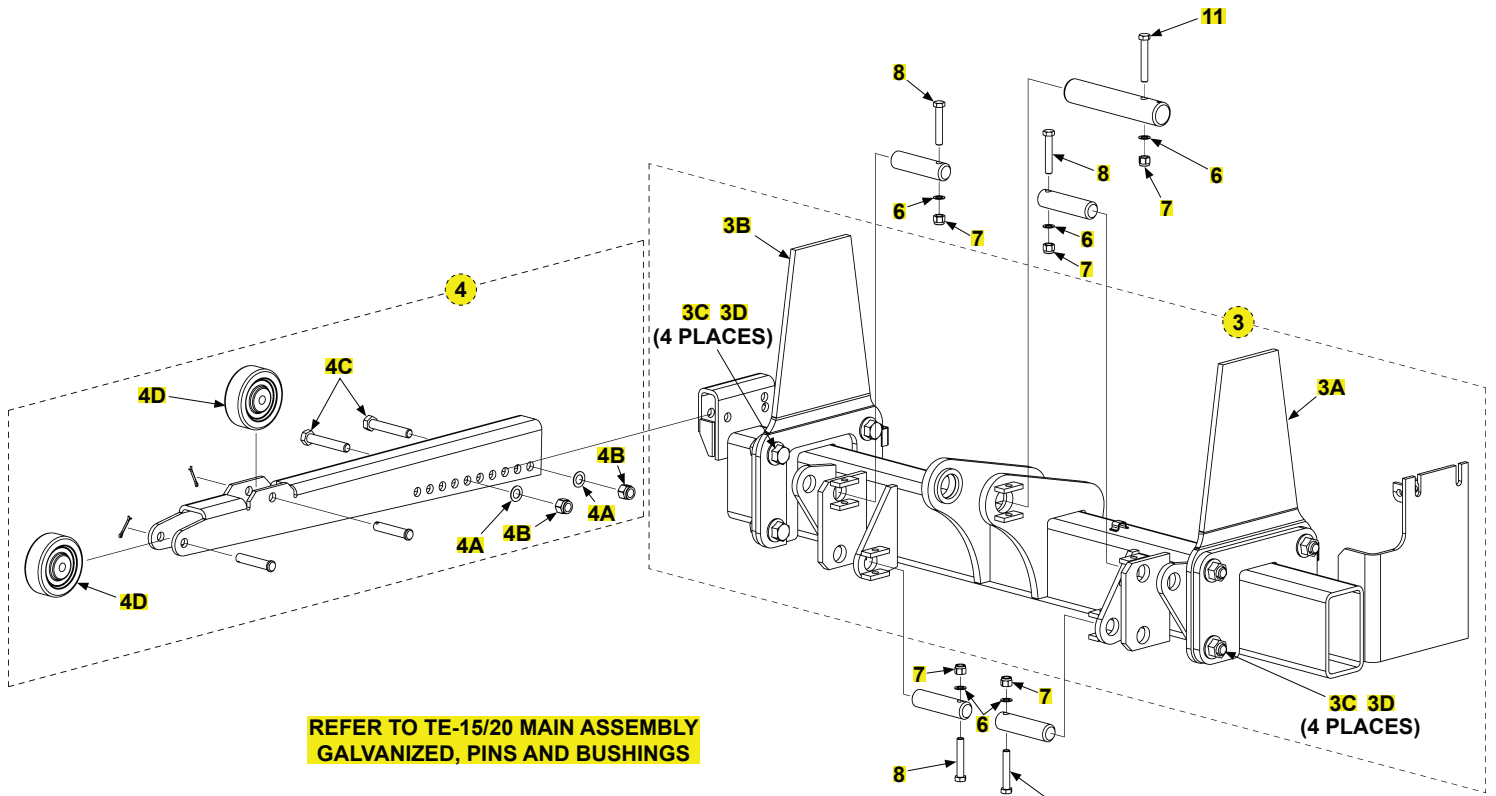
# TE-15/20 MAIN ASSEMBLY PAINTED, PINS AND BUSHINGS

LAST UPDATED  
NOV 2017 to DEC 2020



**TE-15/20 MAIN ASSEMBLY PAINTED, PINS AND BUSHINGS**

<b>ITEM</b>	<b>QTY.</b>	<b>PART NO.</b>	<b>DESCRIPTION</b>
1	16	260916-08	BEARING,SELF LUBE 1"DIA X .75"
2	2	905202-03	PIN CLEVIS, .500 DIA X 2.50
3	2	030805	COTTER PIN 1/8 X 1"
4	1	262981	PIN 1"DIA X 14.00"LG
5	6	252686	PIN 1"DIA. 4.00"LG
6	2	286074-01	PIN, CYLINDER
7	1	260830	PIN 1"DIA X 7.25"LG

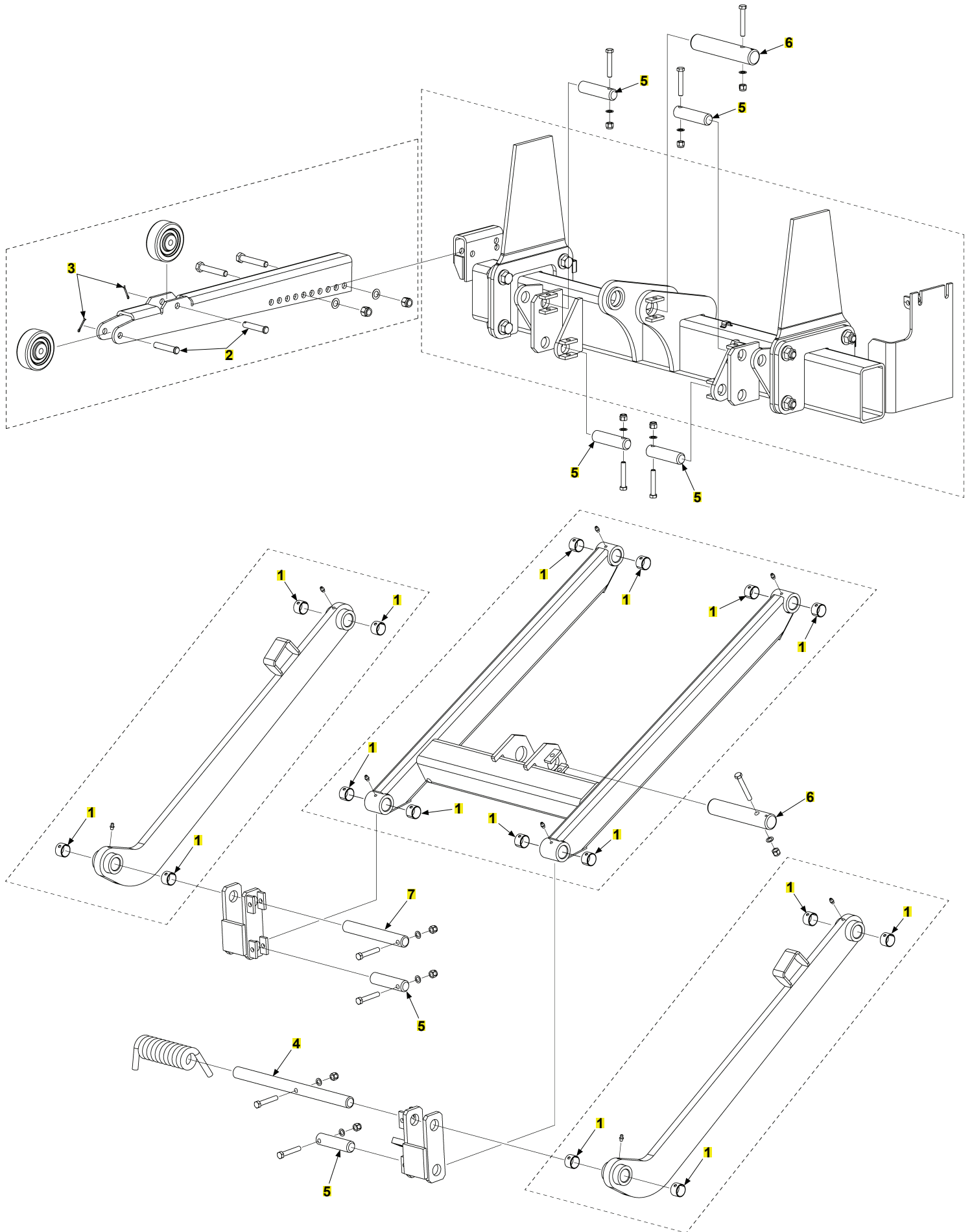


## TE-15/20 MAIN ASSEMBLY GALVANIZED

ITEM	QTY.	PART NO.	DESCRIPTION
1	1	286009-01G	LIFT FRAME ASSY, GAL
1A	4	224342	FITTING, GREASE 1/4"SELF DRILL
2	2	286007-01G	PARALLEL ARM ASSY,GAL
2A	4	224342	FITTING, GREASE 1/4"SELF DRILL
3	1	298030-01G	MAIN FRAME ASSY,TE-15/TE-20,G
3A	1	298351-01	MOUNT PL. WLDMT, TE, .13 JOG
3B	1	298351-02	MOUNT PL. WLDMT, TE, .13 JOG
3C	8	901615-03	BOLT HEX FRAME .63-11X1.75"LG
3D	8	901023-04	FLANGE LOCK NUT, 63-11, ZC
4	1	287060-01G	KIT, OPENER, TUK-A-WAY,G
4A	2	902000-13	WASHER, FLAT .500 .032 THK
4B	2	901010	NUT, NYLON LOCK 1/2-13 ZC
4C	2	900035-9	SCREW,CAP HXHD.5-13UNC-2A 3.00
4D	2	280082-01	ROLLER, OPENER,3.5 X 1.25 X .5
5	1	286038-01	TORSION SPRING, RH HELIX
6	10	902000-9	WASHER, FLAT.375X.032 THK
7	10	901002	NUT, NYLON 3/8-16 ZINC
8	8	900014-9	SCREW,HEX CAP.38-16X2.25,G8,ZC
9	1	296872-08G	SHACKLE WLDMT,HB,LH,4.13,NO SPRG BRKT,G
		296872-09G	SHACKLE WLDMT,HB,LH,4.63,NO SPRG BRKT,G
10	1	296872-07G	SHACKLE WLDMT,HB,RH,4.13,G
		296872-02G	SHACKLE WLDMT,HB,RH,4.63,GAL
11	2	900014-18	SCREW,HEX CAP.38-16X2.75,G8,ZC

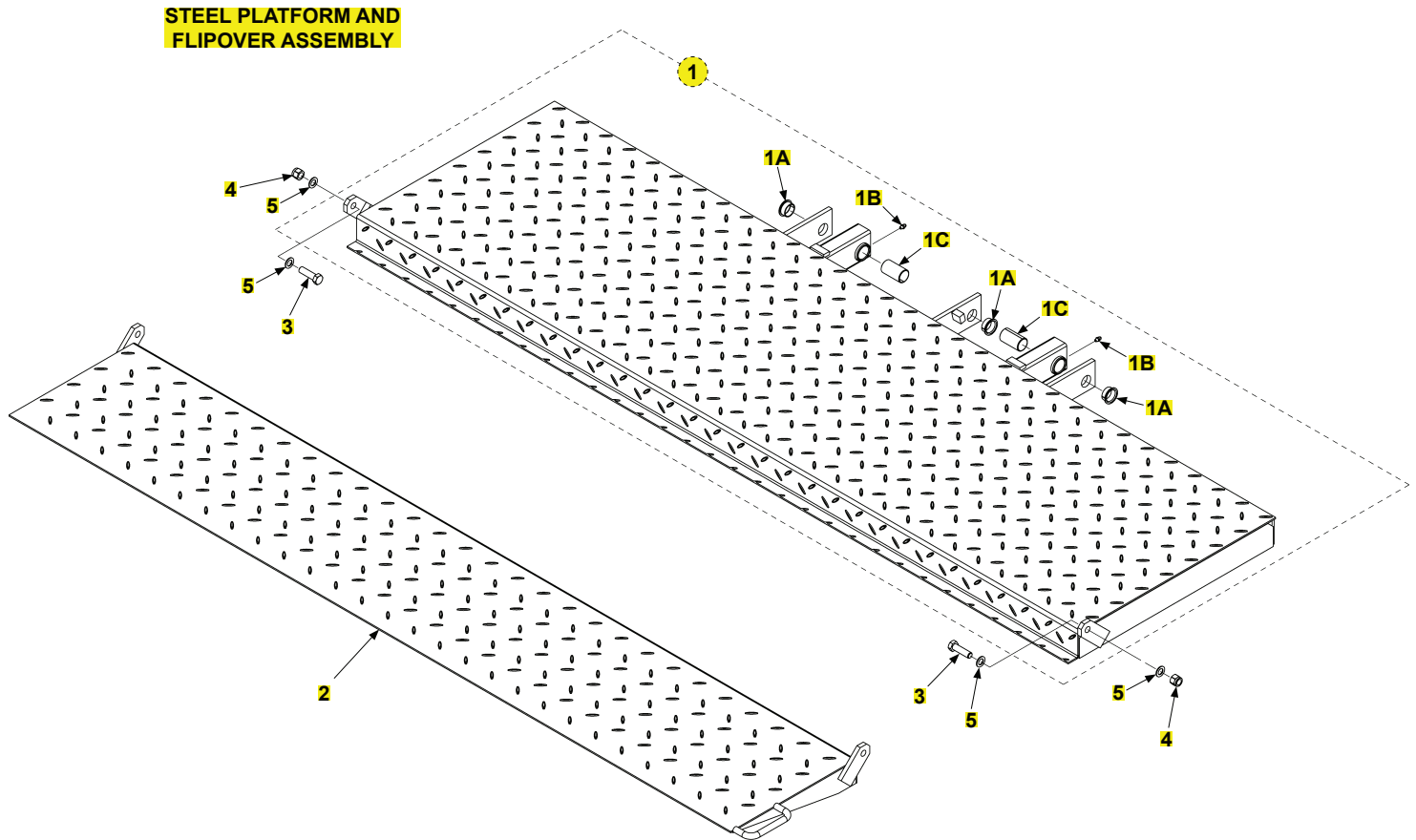
# TE-15/20 MAIN ASSEMBLY GALVANIZED, PINS AND BUSHINGS

LAST UPDATED  
NOV 2017 to DEC 2020

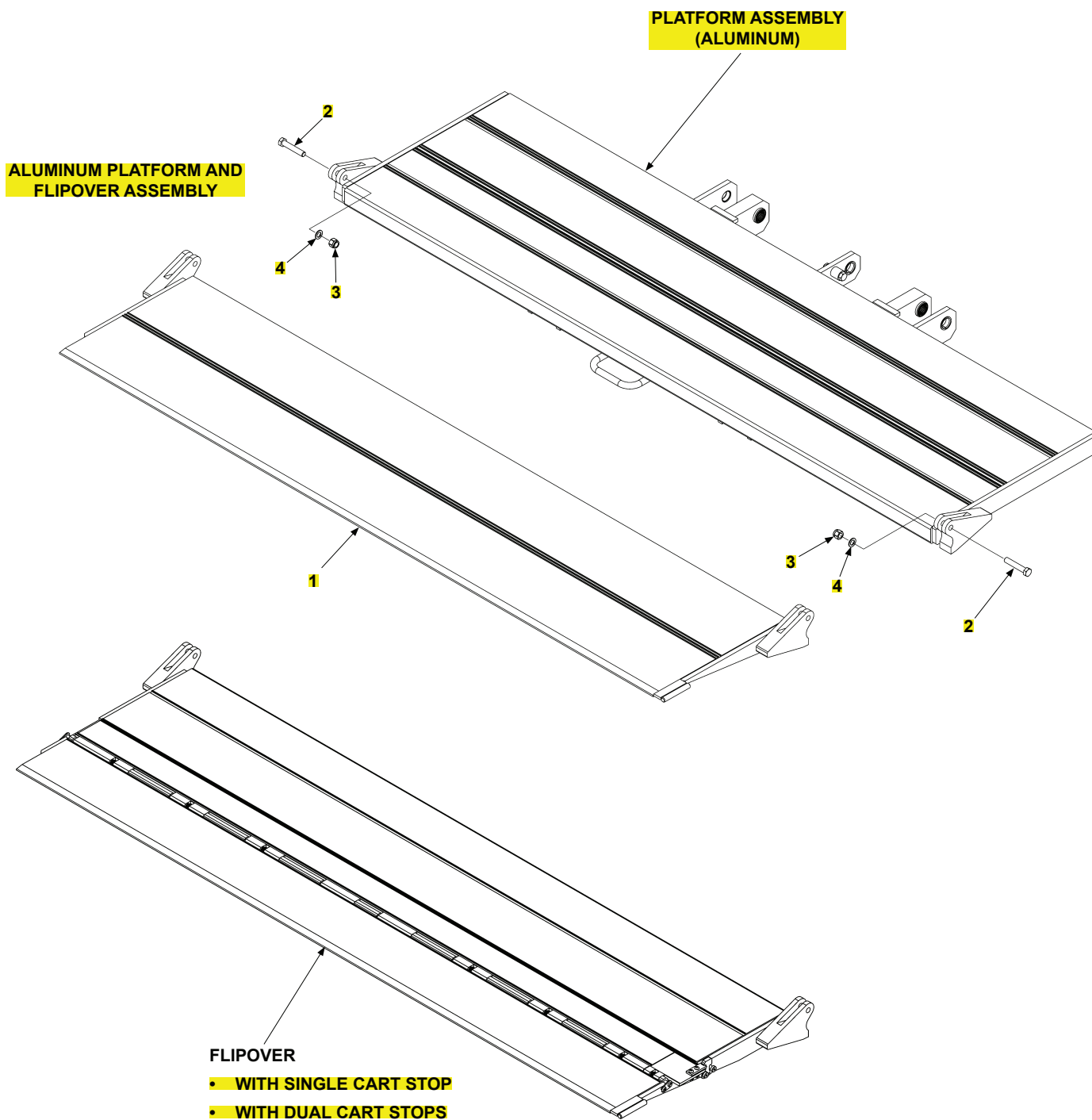


**TE-15/20 MAIN ASSEMBLY GALVANIZED, PINS AND BUSHINGS**

<b>ITEM</b>	<b>QTY.</b>	<b>PART NO.</b>	<b>DESCRIPTION</b>
1	16	260916-08	BEARING,SELF LUBE 1"DIA X .75"
2	2	905202-03	PIN CLEVIS, .500 DIA X 2.50
3	2	030805	COTTER PIN 1/8 X 1"
4	1	262981	PIN 1"DIA X 14.00"LG
5	6	252686	PIN 1"DIA. 4.00"LG
6	2	286074-01	PIN, CYLINDER
7	1	260830	PIN 1"DIA X 7.25"LG

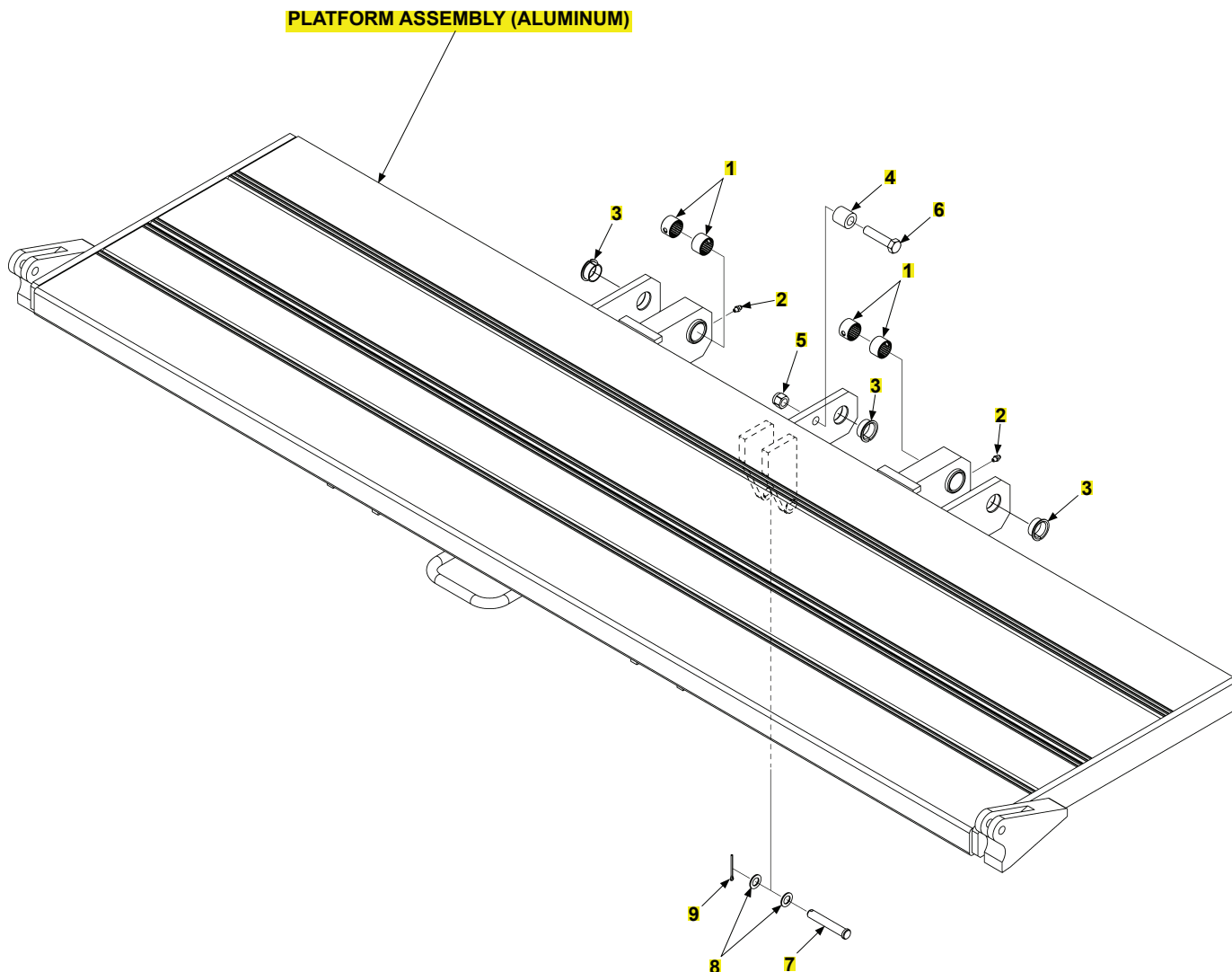


ITEM	QTY.	PART NO.	DESCRIPTION
REF	1	298025-01	P/F & F/O ASSY,80X22+14 ST
		298025-01G	P/F & F/O ASSY,80X22+14 ST,G
1	1	298006-01	P/F ASSY,TE-15/TE-20
		298006-01G	P/F ASSY,TE-15/TE-20,G
1A	3	908002-03	BEARING,SELF LUB.1ID X.5 LG
1B	2	224342	FITTING, GREASE 1/4"SELF DRILL
1C	2	260916-03	BEARING, SELF LUBE 1"DIA X2.00"
2	1	298037-01	F/O WLDMT 80X14WG TE-15/TE-20
		298037-01G	F/O WLDMT 80X14WG TE-15/TE-20,G
3	2	900033-4	SCREW, CAP .5-20X1.75 GR8 ZC
4	2	901008	NUT, NYLON 1/2-20 ZC
5	4	902000-14	WASHER, FLAT .500X.063 THK



ITEM	QTY.	PART NO.	DESCRIPTION
REF	1	298025-02	P/F & F/O ASSY,80X22+18,AL-AL,NCS
		298025-03	P/F & F/O ASSY,80X22+18,AL-AL,SCS
		298025-04	P/F & F/O ASSY,80X22+18,AL-AL,DCS
1	1	296879-03	F/O WLDMT,AL80X18,NCS
2	2	900033-8	SCREW, CAP.5-20X2.75 GR8 ZC
3	2	901008	NUT, NYLON 1/2-20 ZC
4	2	902000-14	WASHER, FLAT .500X.063 THK

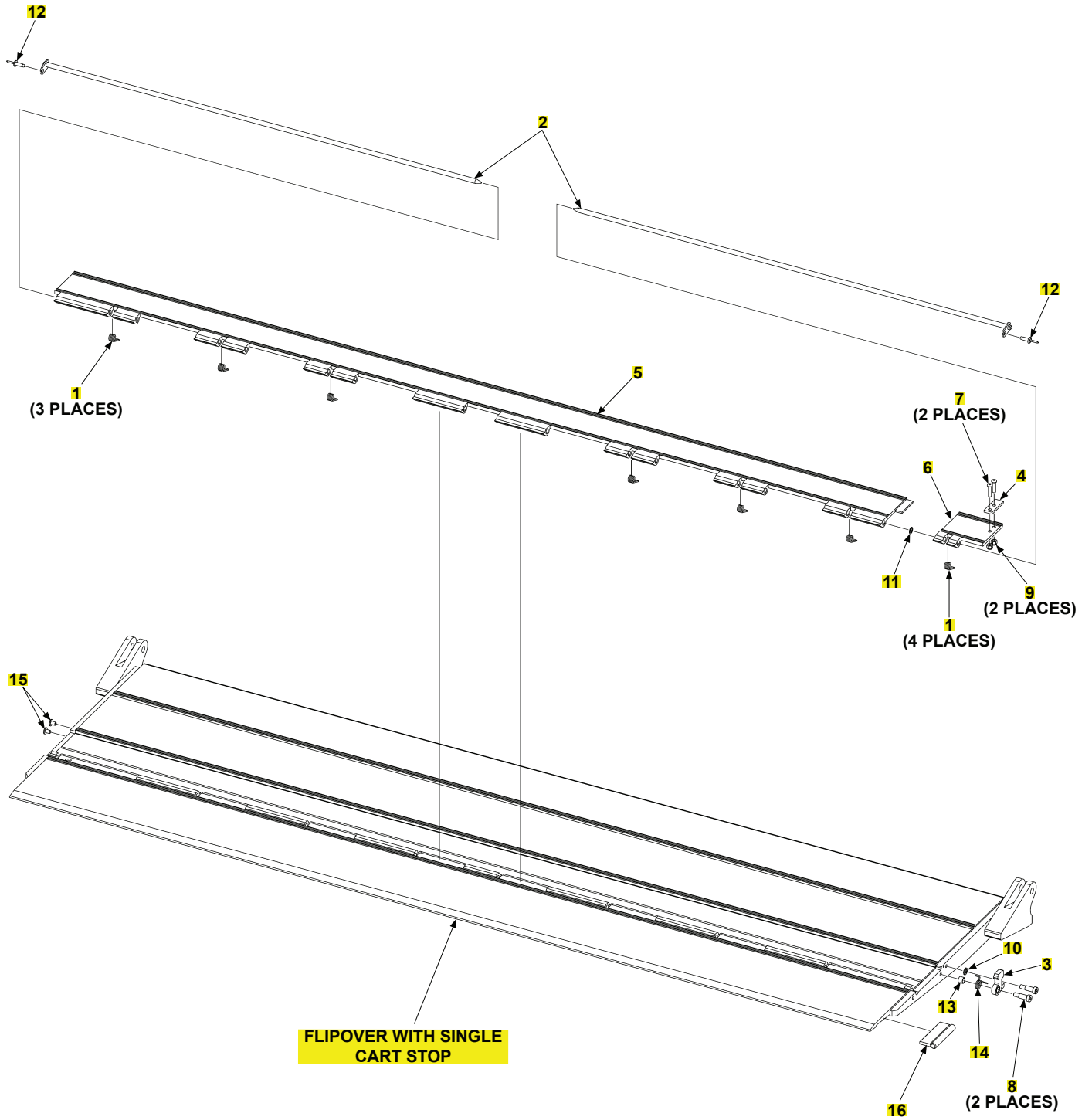




ITEM	QTY.	PART NO.	DESCRIPTION
REF	1	296893-03	P/F ASSY, AL 80 X 22
1	4	908178-01	BEARING,PRE LUBRICATING 1.00ID X .75 LG
2	2	224342	FITTING, GREASE 1/4"SELF DRILL
3	3	908002-03	BEARING,SELF LUB.1ID X.5 LG
4	1	286053-01	BUSHING, PLATFORM SPRING
5	1	901010	NUT, NYLON LOCK 1/2-13 ZC
6	1	900035-6	SCREW,CAP HXHD.5-13UNC-2A 2.25
7	1	261838	PIN, CLEVIS 1/2 X 3 ZINC
8	2	902000-14	WASHER, FLAT .500X.063 THK
9	1	030177	PIN COTTER 1/8X1-1/2 ZC

# TE-15/20 FLIPOVER WITH SINGLE CART STOP

LAST UPDATED  
NOV 2017 to DEC 2020

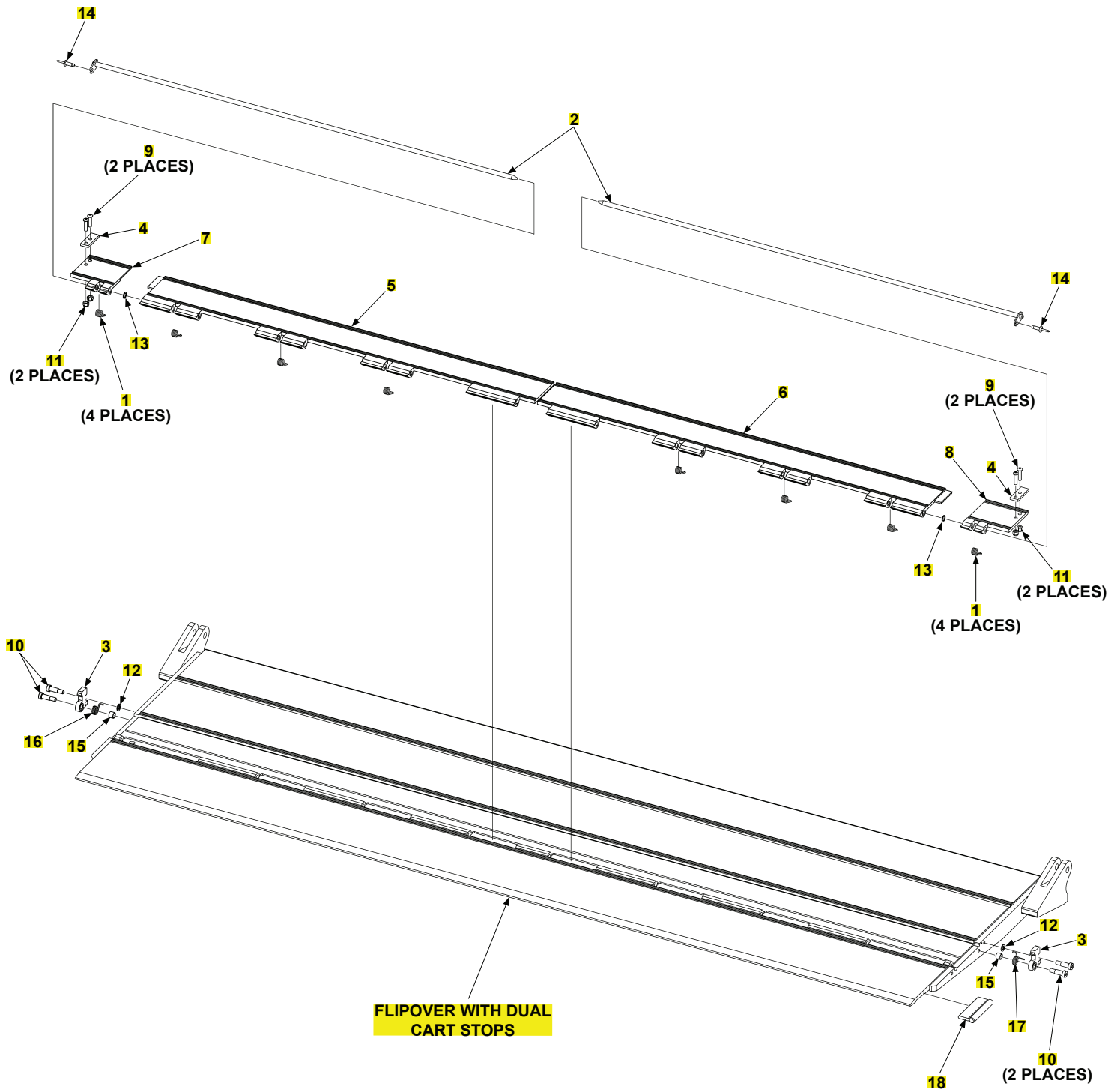


## TE-15/20 FLIPOVER WITH SINGLE CART STOP

ITEM	QTY.	PART NO.	DESCRIPTION
REF	1	296895-05	F/O ASSY,AL,EXTRN HNG,SCS,80X18
1	7	282729-01	SPRING, C/S .08 WIRE, 302 SS
2	2	282738-03	PIN WLDMT, CART STOP
3	1	282739-01	HOOK, CART STOP LOCKING
4	1	282748-01	FLAT, C/S LOCK SUPPORT
5	1	286055-01	SINGLE CART STOP, 80" F/O
6	1	286099-02	LOCK-HINGE, CART STOP, RH
7	2	900005-4	SCREW, BUTTON 1/4-20X1 ALLOY
8	2	900723-05	SCREW,SHLDR.38 X.75 LG,SS
9	2	901000	NUT, NYLON 1/4-20 ZINC
10	1	902000-8	WASHER, FLAT .312 .063 THK
11	1	903402-08	WASHER,FLAT,NYLON,.38ID X.56OD
12	2	903715-06	RIVET,BL/DM,AL/AL .25X.62-.75
13	1	905328-01	BEARING, NYL .38IDX.50DX.38LG
14	1	282749-02	SPRING,RH HOOK,.078 WIRE,302SS
15	2	908022-07	PLUG, FLEXIBLE .275X.511
16	1	265819-01	HANDLE WELDMENT, AL, F/O

# TE-15/20 FLIPOVER WITH DUAL CART STOPS

LAST UPDATED  
NOV 2017 to DEC 2020



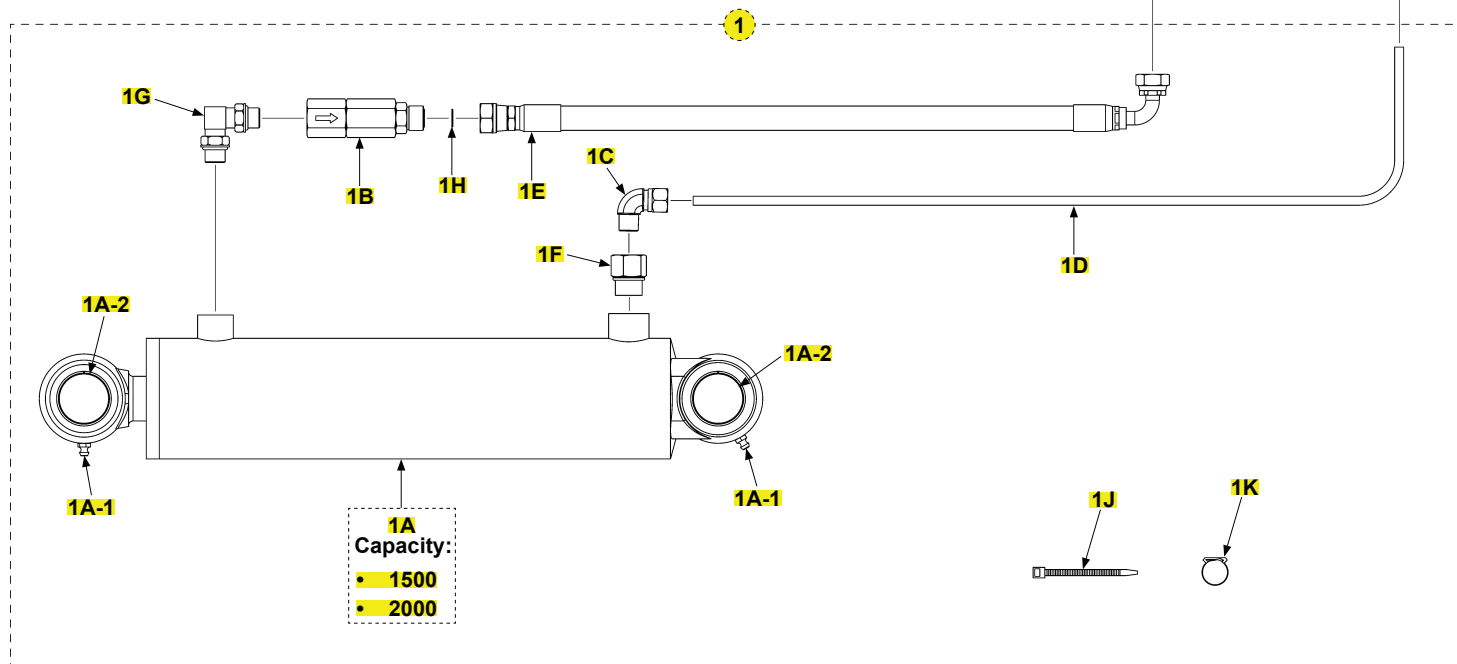
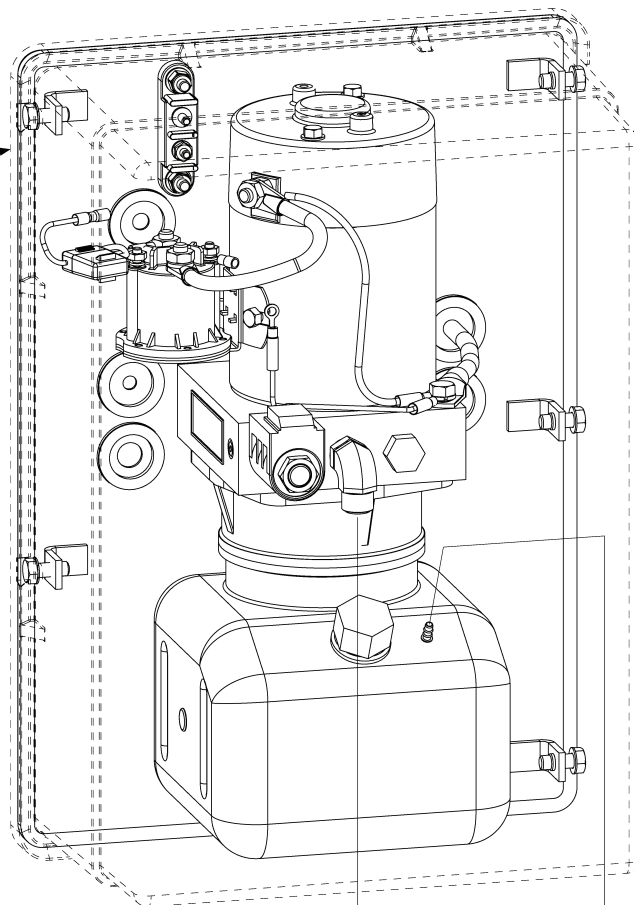
**TE-15/20 FLIPOVER WITH DUAL CART STOPS**

ITEM	QTY.	PART NO.	DESCRIPTION
REF	1	296895-06	F/O ASSY,AL,EXTRN HNG,DCS,80X18
1	8	282729-01	SPRING, C/S .08 WIRE, 302 SS
2	2	282738-03	PIN WLDMT, CART STOP
3	2	282739-01	HOOK, CART STOP LOCKING
4	2	282748-01	FLAT, C/S LOCK SUPPORT
5	1	286055-02	DUAL CART STOP, LH, 80" F/O
6	1	286055-03	DUAL CART STOP, RH, 80" F/O
7	1	286099-01	LOCK-HINGE, CART STOP, LH
8	1	286099-02	LOCK-HINGE, CART STOP, RH
9	4	900005-4	SCREW, BUTTON 1/4-20X1 ALLOY
10	4	900723-05	SCREW,SHLDR.38 X.75 LG,SS
11	4	901000	NUT, NYLON 1/4-20 ZINC
12	2	902000-8	WASHER, FLAT .312 .063 THK
13	2	903402-08	WASHER,FLAT,NYLON,.38ID X.56OD
14	2	903715-06	RIVET,BL/DM,AL/AL .25X.62-.75
15	2	905328-01	BEARING, NYL .38IDX.50DX.38LG
16	1	282749-01	SPRING,LH HOOK,.078 WIRE,302SS
17	1	282749-02	SPRING,RH HOOK,.078 WIRE,302SS
18	1	265819-01	HANDLE WELDMENT, AL, F/O

**NOTE:** Replacement face seal fittings come with required O-rings.

**PUMP ASSEMBLY (GRAVITY DOWN)**

- 12V
- 24V

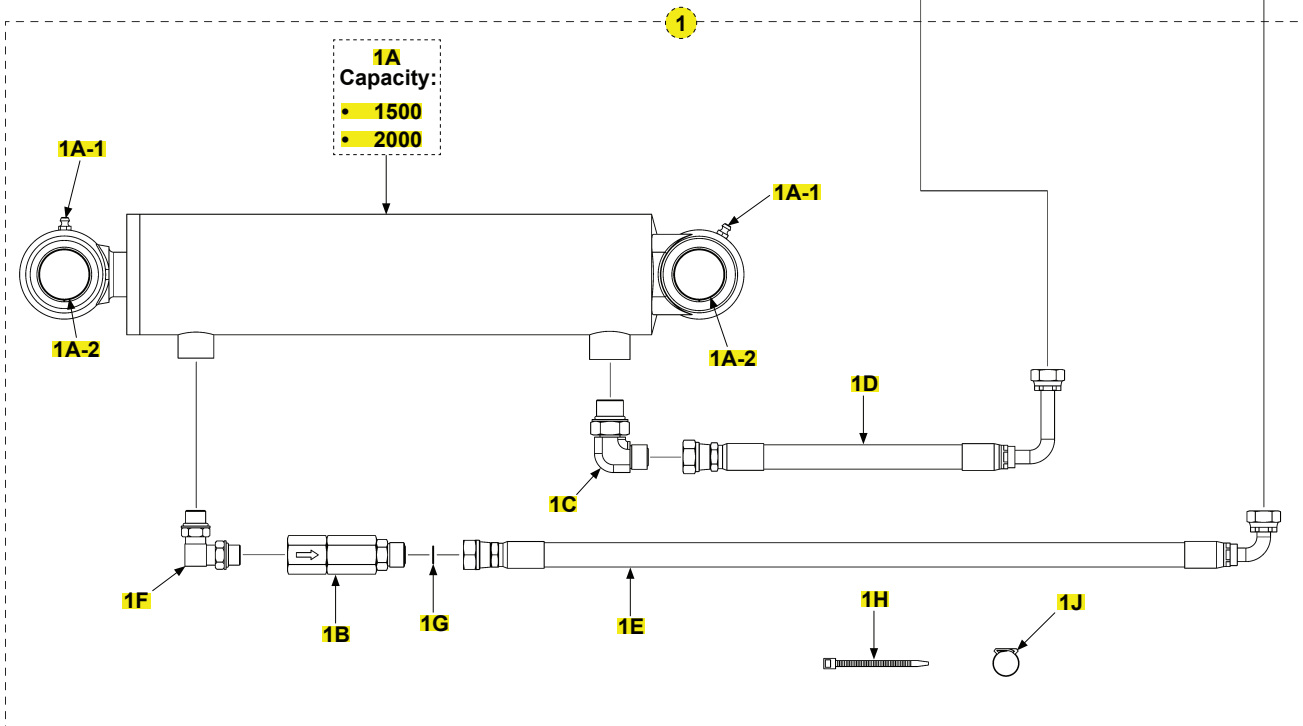
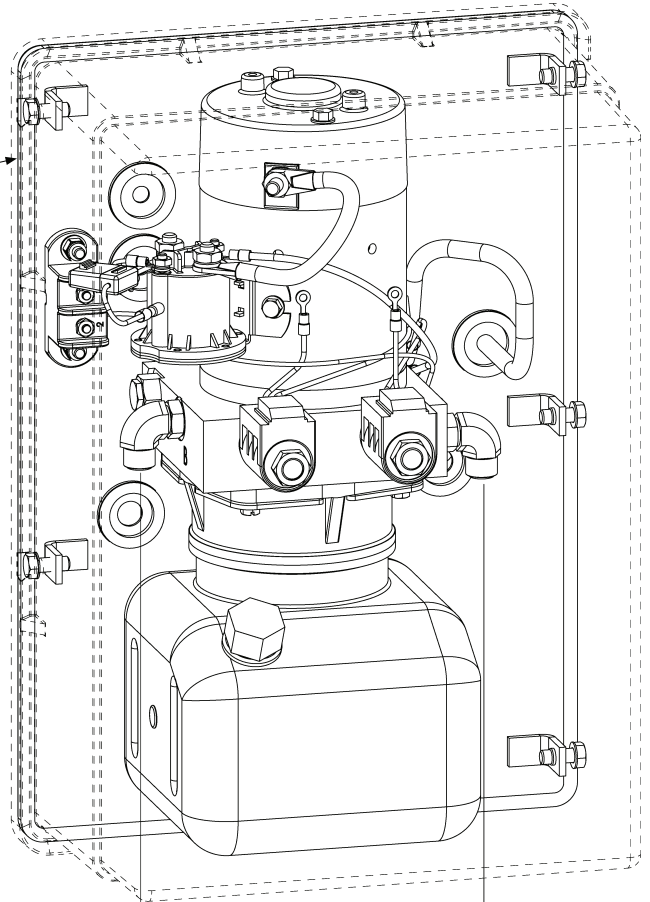


**TE-15/20 HYDRAULIC SYSTEMS - GRAVITY DOWN**

ITEM	QTY.	PART NO.	DESCRIPTION
1	1	287055-01	KIT,CYL,FITTING & HOSE,GD PMP,TE-25/TE-150
		287055-03	KIT,CYL,FITTING & HOSE,GD PMP,TE-30/TE-20
1A	1	297522-01	CYL DIA 3.00 BORE X 10ST. S/LB/BUSH
		297523-01	CYL 3.5 BRX10"ST.S/LB/BUSH
1A-1	2	224342	FITTING, GREASE 1/4" SELF DRILL
1A-2	4	905112-03	BEARING,SELF LUBE1.375 X 1.375
1B	1	298878-01	PRESSURE COMP. VALVE ASSY,2GPM,TE
1C	1	202406	ELBOW BRASS 1/4 X 1/4"
1D	1	224370-07	HOSE PLASTIC X 60.50"LG .25
1E	1	298024-01	H/A,3/8HP, SAENO.6,F,SW 90 DEGREES, UP LINE
1F	1	906925-01	PIPE ADAPTER, SAE-ORB/NPTF, 8-1/4
1G	1	906722-01	ELBOW, 90 NPSC O-RING #6M-M
1H	1	906712-02	O-RING #6, 3/8 ORFS TUBE END
1J	8	205780	TIE, PLASTIC 7" (50 LB)
1K	1	287513-01	NYLON HOSE CLAMP. 0.39 I.D. X .22 LONG

**NOTE:** Replacement face seal fittings come with required O-rings.

**PUMP ASSEMBLY  
(POWER DOWN)**





**TE-15/20 HYDRAULIC SYSTEMS - POWER DOWN**

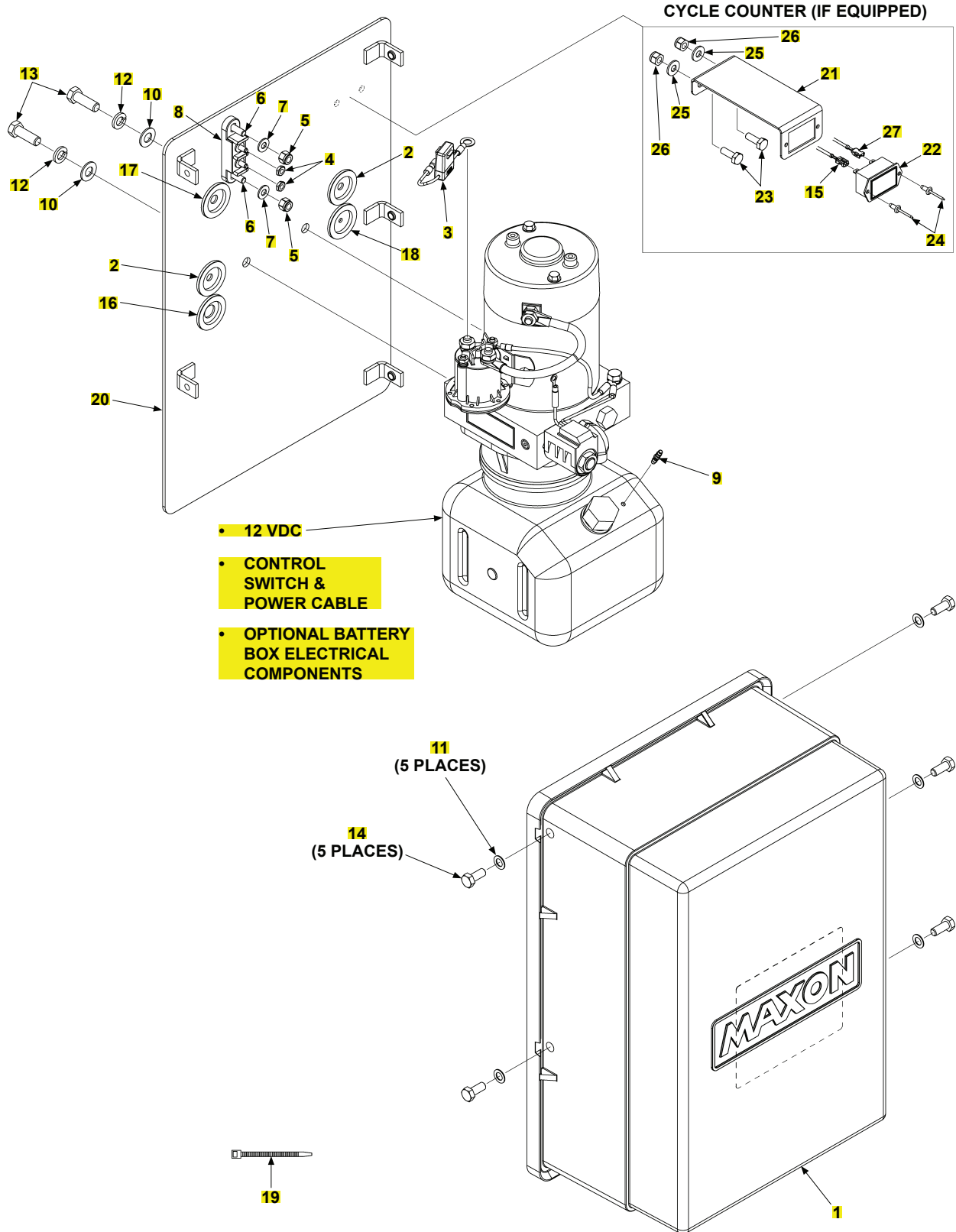
ITEM	QTY.	PART NO.	DESCRIPTION
1	1	287055-02	KIT,CYL,FITTING & HOSE,PD PMP,TE-25/TE-150
		287055-04	KIT,CYL,FITTING & HOSE,PD PMP,TE-30/TE-20
1A	1	297522-01	CYL DIA 3.00 BORE X 10ST. S/LB/BUSH
		297523-01	CYL 3.5 BRX10"ST.S/LB/BUSH
1A-1	2	224342	FITTING, GREASE 1/4" SELF DRILL
1A-2	4	905112-03	BEARING,SELF LUBE1.375 X 1.375
1B	1	298878-01	PRESSURE COMP. VALVE ASSY,2GPM,TE
1C	1	906924-01	ELBOW, STR THD, #6 ORFS/#8 SAE-ORB
1D	1	298023-01	H/A,3/8HP, SAE#6,F,SW 90°, DN LINE
1E	1	298024-01	H/A,3/8HP, SAENO.6,F,SW 90 DEGREES, UP LINE
1F	1	906722-01	ELBOW, 90 NPSC O-RING #6M-M
1G	1	906712-02	O-RING #6, 3/8 ORFS TUBE END
1H	8	205780	TIE, PLASTIC 7" (50 LB)
1J	1	287513-01	NYLON HOSE CLAMP. 0.39 I.D. X .22 LONG

# PUMP ASSEMBLY (GRAVITY DOWN 12V)

LAST UPDATED  
MAY 2017 to DEC 2020

COMPLETE ASSEMBLY:

## PUMP ASSEMBLY (GRAVITY DOWN 12V)



**PUMP ASSEMBLY (GRAVITY DOWN 12V)**

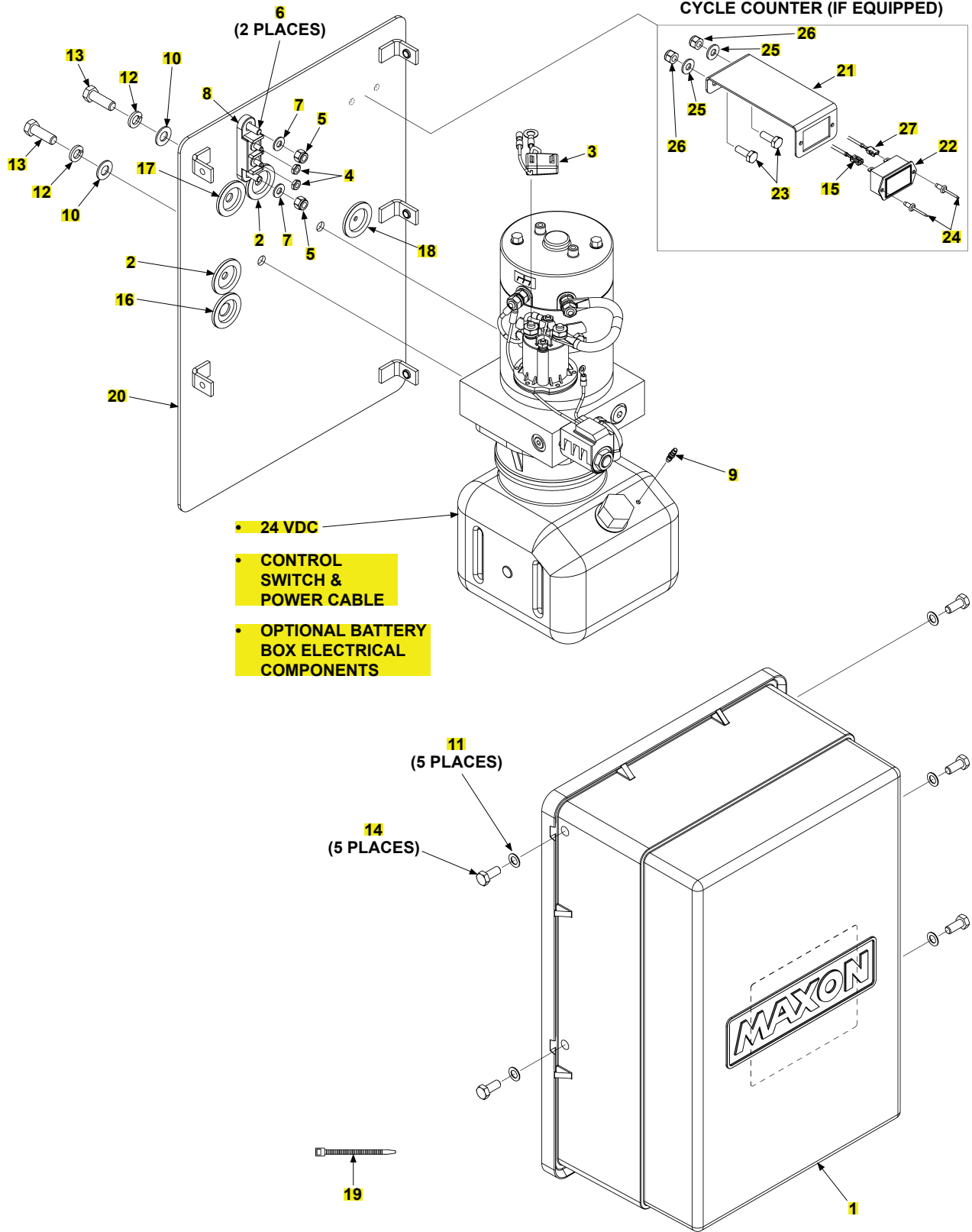
ITEM	QTY.	PART NO.	DESCRIPTION
REF	1	287070-01G	PUMP ASSY,12V,G/D,G
		287070-03G	PUMP ASSY,12V,CC,G/D,G
1	1	266419-01	COVER ASSY, TUK-A-WAY PUMP
2	2	266428-03	GROMMET, 1.0 DIA DIAPH .31 DIA HOLE
3	1	297046-01	FUSE HOLDER ASSY
4	2	903107-06	NUT, HEX 10-24 UNC SS
5	2	903137-01	NUT, NYL INSRT STOP .25-20 SS
6	2	900000-4	BOLT, HX 1/4-20X1 GR8 ZC
7	2	903412-01	WASHER,FLAT .25,SS
8	1	907279-01	JUNCTION BLOCK, TWO STUD
9	1	906728-01	FTG, TUBE, DUAL BARBED .170 ID
10	2	902013-11	WASHER, FLAT 3/8" ZC
11	5	902000-7	WASHER, FLAT .312 .032 THK
12	2	902011-4	WASHER, LOCK 3/8X.094 ZC
13	2	900014-21	SCREW, HEX CAP .38-16X1.125, G8, ZC
14	5	900009-3	BOLT,HEX 5/16-18X3/4 GR8 ZC
15	1	297274-02	WIRE ASSY, POS LOCK, RING TERM,RED
16	1	266428-06	GROMMET, 1.0 DIAPH .56 HOLE
17	1	266428-04	GROMMET, 1.0 DIAPH .38 HOLE
18	1	266428-01	GROMMET, 1.0 DIAPH .19 HOLE
19	2	205780	TIE, PLASTIC 7" (50 LB)
20	1	296921-01G	PLATE,PUMP MOUNT,WLDMT,G/D,G
		296921-02G	PLATE, PUMP MOUNT, WLDMT,CC,G
21	1	297358-01	BRACKET, DIGITAL C/COUNT
22	1	297269-01	DIGITAL CYCLE COUNTER
23	2	900004-2	SCREW, CAP 1/4-20X3/4 GR8 ZC
24	2	903721-01	RIVET, BL/DM, SS .16X.02-.13
25	2	902013-09	WASHER1/4"ZINC-SAME030564
26	2	901000	NUT, NYLON 1/4-20 ZINC
27	1	297274-01	WIRE ASSY, POS LOCK, RING TERM,BLK

# PUMP ASSEMBLY (GRAVITY DOWN 24V)

LAST UPDATED  
MAY 2017 to DEC 2020

COMPLETE ASSEMBLY:

## PUMP ASSEMBLY (GRAVITY DOWN 24V)



**PUMP ASSEMBLY (GRAVITY DOWN 24V)**

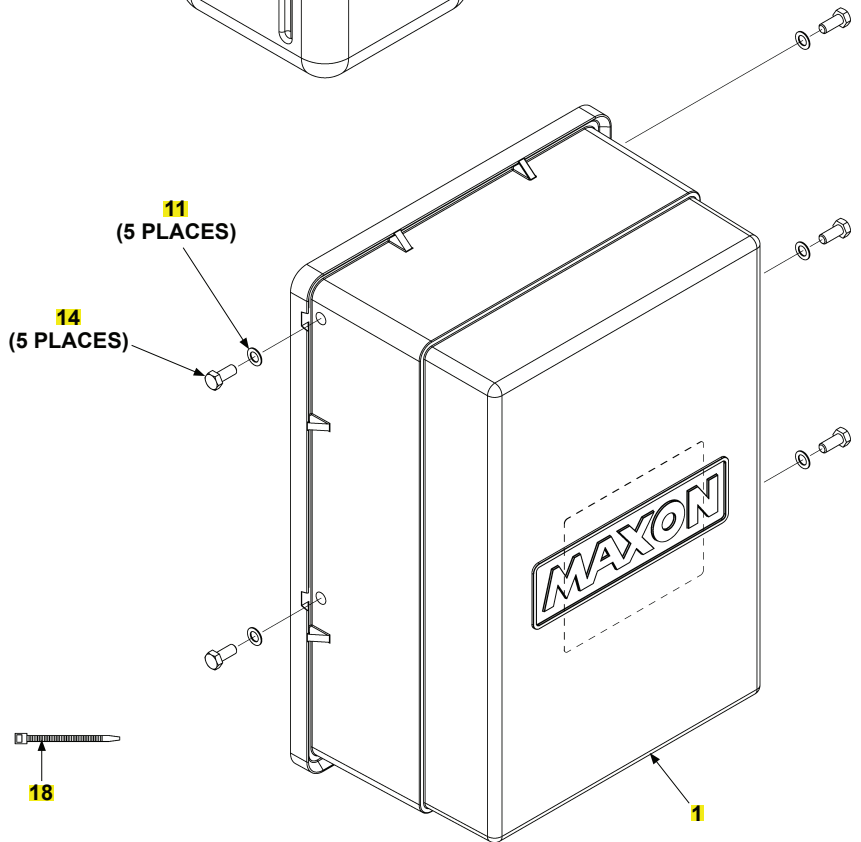
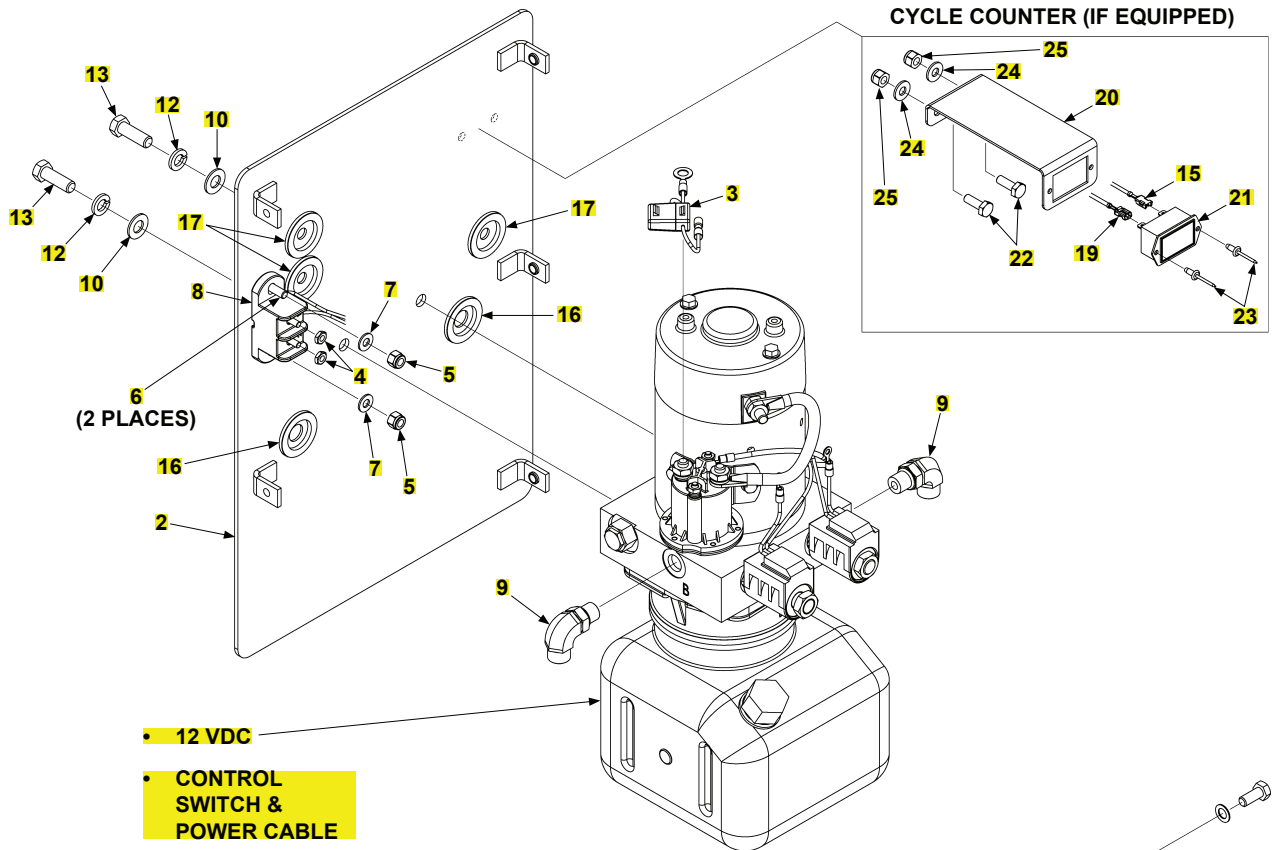
ITEM	QTY.	PART NO.	DESCRIPTION
REF	1	287070-02G	PUMP ASSY,24V.G/D,G
		287070-04G	PUMP ASSY,24V,CC,G/D,G
1	1	266419-01	COVER ASSY, TUK-A-WAY PUMP
2	2	266428-03	GROMMET, 1.0 DIA DIAPH .31 DIA HOLE
3	1	297046-01	FUSE HOLDER ASSY
4	2	903107-06	NUT, HEX 10-24 UNC SS
5	2	903137-01	NUT, NYL INSRT STOP .25-20 SS
6	2	900000-4	BOLT, HX 1/4-20X1 GR8 ZC
7	2	903412-01	WASHER,FLAT .25,SS
8	1	907279-01	JUNCTION BLOCK, TWO STUD
9	1	906728-01	FTG, TUBE, DUAL BARBED .170 ID
10	2	902013-11	WASHER, FLAT 3/8" ZC
11	5	902000-7	WASHER, FLAT .312 .032 THK
12	2	902011-4	WASHER, LOCK 3/8X.094 ZC
13	2	900014-21	SCREW, HEX CAP .38-16X1.125, G8, ZC
14	5	900009-3	BOLT,HEX 5/16-18X3/4 GR8 ZC
15	1	297274-02	WIRE ASSY, POS LOCK, RING TERM,RED
16	1	266428-06	GROMMET, 1.0 DIAPH .56 HOLE
17	1	266428-04	GROMMET, 1.0 DIAPH .38 HOLE
18	1	266428-01	GROMMET, 1.0 DIAPH .19 HOLE
19	3	205780	TIE, PLASTIC 7" (50 LB)
20	1	296921-03G	PLATE, PUMP MOUNT, WLDMT,24V,G
		296921-04G	PLATE, PUMP MOUNT, WLDMT,CC,24V,G
21	1	297358-01	BRACKET, DIGITAL C/COUNT
22	1	297269-01	DIGITAL CYCLE COUNTER
23	2	900004-2	SCREW, CAP 1/4-20X3/4 GR8 ZC
24	2	903721-01	RIVET, BL/DM, SS .16X.02-.13
25	2	902013-09	WASHER1/4"ZINC-SAME030564
26	2	901000	NUT, NYLON 1/4-20 ZINC
27	1	297274-01	WIRE ASSY, POS LOCK, RING TERM,BLK

# PUMP ASSEMBLY (POWER DOWN)

LAST UPDATED  
MAY 2017 to DEC 2020

COMPLETE ASSEMBLY:

## PUMP ASSEMBLY (POWER DOWN)



**PUMP ASSEMBLY (POWER DOWN)**

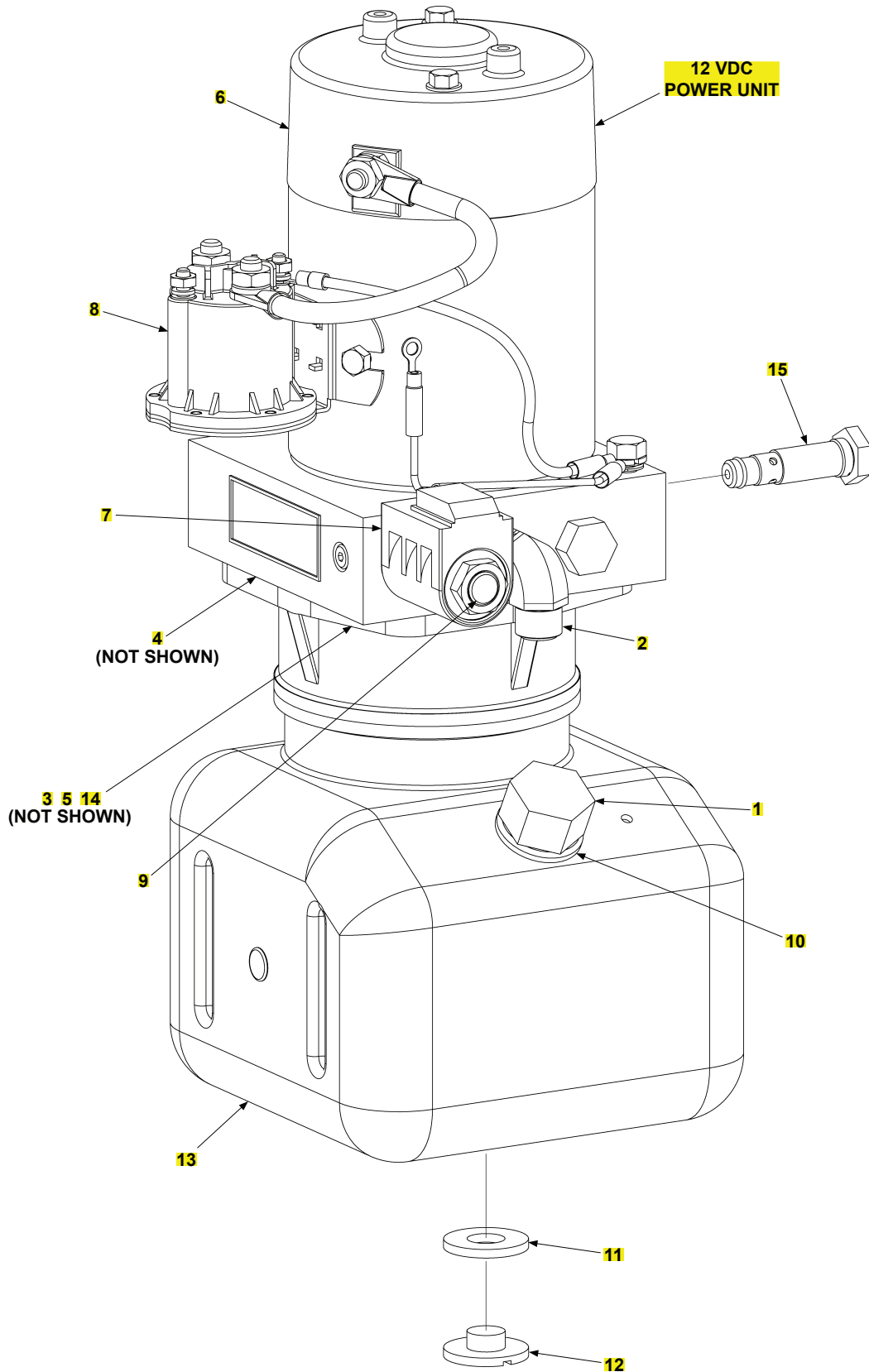
ITEM	QTY.	PART NO.	DESCRIPTION
REF	1	287075-01G	PUMP ASSY,12V, P/D
		287075-02G	PUMP ASSY,12V,P/D,CC,G
1	1	266419-01	COVER ASSY, TUK-A-WAY PUMP
2	1	296919-01G	PLATE WLDMT, P/D PMP MT, GALV
3	1	297046-01	FUSE HOLDER ASSY
4	2	903172-01	NUT, NYL INSRT STOP 10-32 SS
5	2	903137-01	NUT, NYL INSRT STOP .25-20 SS
6	2	900000-4	BOLT, HX 1/4-20X1 GR8 ZC
7	2	903412-01	WASHER,FLAT .25,SS
8	1	296859-01	POWER DOWN MODULE
9	2	906707-01	ELBOW, NPSC,SAE #6 F/S O-R M-M
10	2	902013-11	WASHER, FLAT 3/8" ZC
11	5	902000-7	WASHER, FLAT .312 .032 THK
12	2	902011-4	WASHER, LOCK 3/8X.094 ZC
13	2	900014-21	SCREW, HEX CAP .38-16X1.125, G8, ZC
14	5	900009-3	BOLT,HEX 5/16-18X3/4 GR8 ZC
15	1	297274-01	WIRE ASSY, POS LOCK, RING TERM,BLK
16	2	266428-06	GROMMET, 1.0 DIAPH .56 HOLE
17	3	266428-04	GROMMET, 1.0 DIAPH .38 HOLE
18	3	205780	TIE, PLASTIC 7" (50 LB)
19	1	297274-02	WIRE ASSY, POS LOCK, RING TERM,RED
20	1	297358-01	BRACKET, DIGITAL C/COUNT
21	1	297269-01	DIGITAL CYCLE COUNTER
22	2	900004-2	SCREW, CAP 1/4-20X3/4 GR8 ZC
23	2	903721-01	RIVET, BL/DM, SS .16X.02-.13
24	2	902013-09	WASHER1/4"ZINC-SAME030564
25	2	901000	NUT, NYLON 1/4-20 ZINC

**CAUTION**

Do not over-tighten the terminal nuts on starter solenoid. For the load terminals, torque nuts to 40 lbs.-in. max. Torque the nuts on #10-32 control terminals 15-20 lbs.-in.

**CAUTION**

To prevent damage when installing 2-way valves, torque valve cartridge nut to 30 lbs.-in. max.





**12 VDC POWER UNIT (GRAVITYDOWN)**

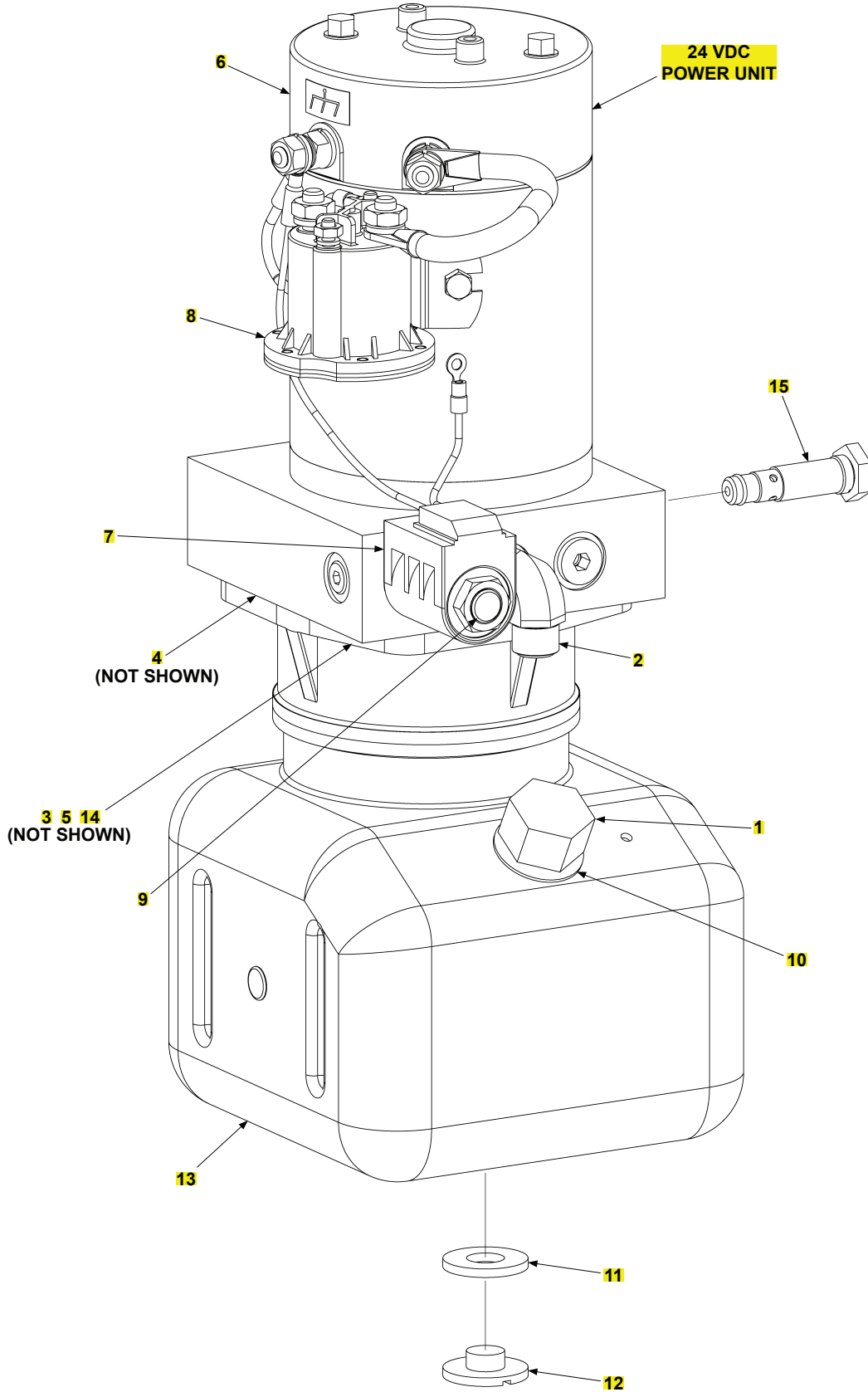
<b>ITEM</b>	<b>QTY.</b>	<b>PART NO.</b>	<b>DESCRIPTION</b>
REF	1	287071-01	12 VDC PWR UNIT, G/D, TUK-A-WAY
1	1	280806-01	FILLER, BREATHER
2	1	906707-01	ELBOW, NPSC,SAE #6 F/S O-R M-M
3	1	260261	OIL SEAL,PUMP
4	1	290061	SEAL SQUARE CUT PL RESERVOIR
5	1	290020	O-RING, KEPNER CHECK VALVE
6	1	290175-01	12VDC MOTOR W/OUT TERM SW
7	1	290210	12 VDC COIL, DOUBLE LEADS (PDL12) (39002186)
8	1	284080-01	SWITCH, SOLENOID ASSY
9	1	290215	VALVE 2P2W NC DELTA (38502314)
10	1	908016-01	GROMMET, RUBBER, .60 ID
11	1	290209	WASHER, .56 ID X 1.25 OD (61200504)
12	1	290208	PLUG, 9/16-18, PLASTIC TANK (35901162)
13	1	290207	RESERVOIR, PLASTIC, 8.00 LG (32301527)
14	1	906781-01	PUMP ASSY,203,GPT P/D
15	1	906737-01	CARTRIDGE RELIEF VALVE

**CAUTION**

Do not over-tighten the terminal nuts on starter solenoid. For the load terminals, torque nuts to 40 lbs.-in. max. Torque the nuts on #10-32 control terminals 15-20 lbs.-in.

**CAUTION**

To prevent damage when installing 2-way valves, torque valve cartridge nut to 30 lbs.-in. max.



**24 VDC POWER UNIT (GRAVITYDOWN)**

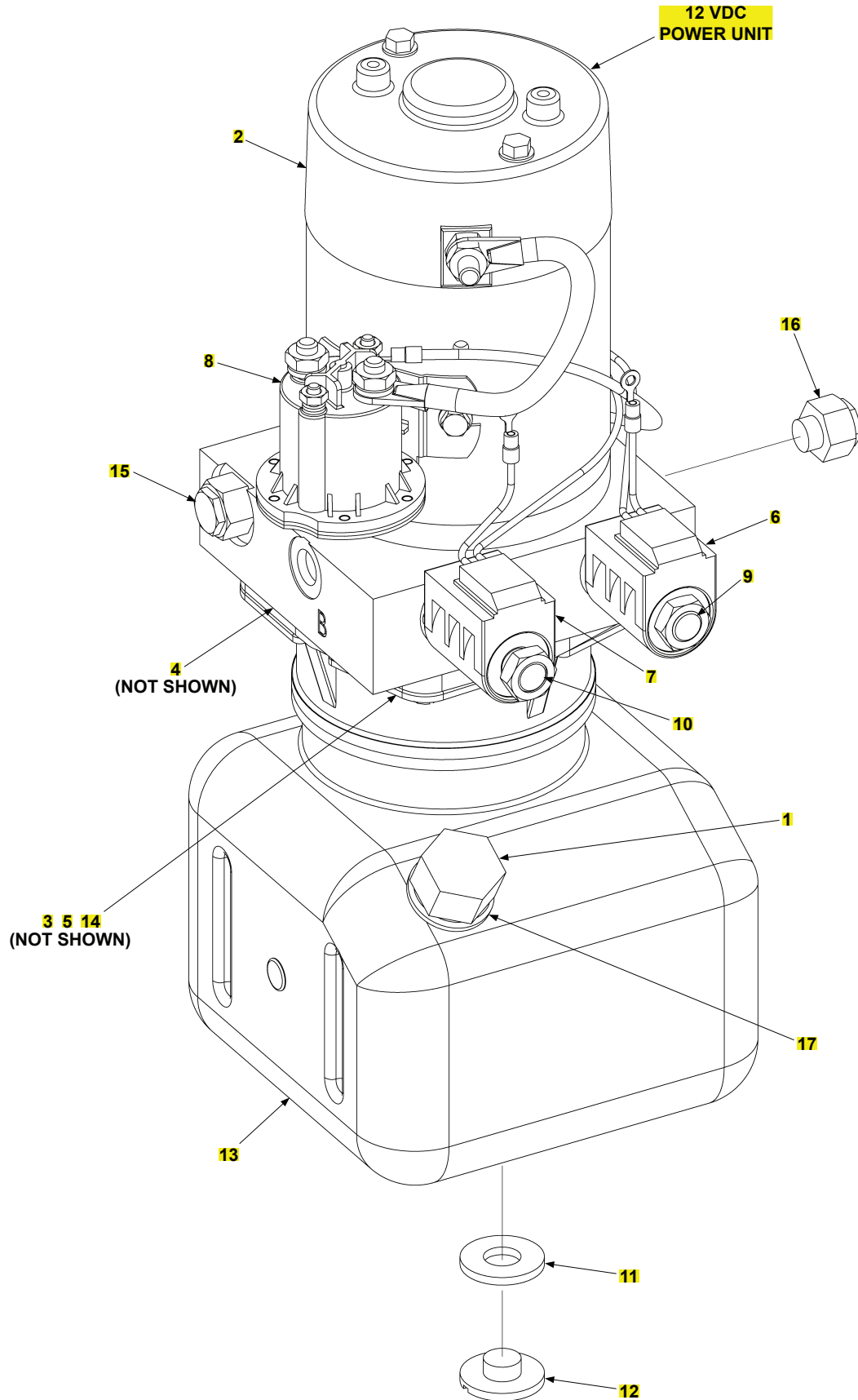
<b>ITEM</b>	<b>QTY.</b>	<b>PART NO.</b>	<b>DESCRIPTION</b>
REF	1	287072-01	24VDC POWER UNIT, GD
1	1	280806-01	FILLER, BREATHER
2	1	906707-01	ELBOW, NPSC,SAE #6 F/S O-R M-M
3	1	260261	OIL SEAL,PUMP
4	1	290061	SEAL SQUARE CUT PL RESERVOIR
5	1	290020	O-RING, KEPNER CHECK VALVE
6	1	290176-01	24VDC MOTOR W/OUT TERM SW
7	1	290211	24 VDC COIL, DOUBLE LEADS (PDL24) (39002187)
8	1	284080-02	SWITCH, SOLENOID ASSY, 24VDC
9	1	290215	VALVE 2P2W NC DELTA (38502314)
10	1	908016-01	GROMMET, RUBBER, .60 ID
11	1	290209	WASHER, .56 ID X 1.25 OD (61200504)
12	1	290208	PLUG, 9/16-18, PLASTIC TANK (35901162)
13	1	290207	RESERVOIR, PLASTIC, 8.00 LG (32301527)
14	1	906781-01	PUMP ASSY,203,GPT P/D
15	1	906737-01	CARTRIDGE RELIEF VALVE

**CAUTION**

Do not over-tighten the terminal nuts on starter solenoid. For the load terminals, torque nuts to 40 lbs.-in. max. Torque the nuts on #10-32 control terminals 15-20 lbs.-in.

**CAUTION**

To prevent damage when installing 2-way valves, torque valve cartridge nut to 30 lbs.-in. max.



**12 VDC POWER UNIT (POWER DOWN)**

<b>ITEM</b>	<b>QTY.</b>	<b>PART NO.</b>	<b>DESCRIPTION</b>
REF	1	287076-01	12VDC POWER UNIT,P/D,TUK-A-WAY
1	1	280806-01	FILLER, BREATHER
2	1	290177-01	12VDC MOTOR W/OUT TERM SW, P/D
3	1	260261	OIL SEAL,PUMP
4	1	290061	SEAL SQUARE CUT PL RESERVOIR
5	1	290020	O-RING, KEPNER CHECK VALVE
6	1	290213	12 VDC COIL, DOUBLE LEADS (PDL12) (39002189)
7	1	290212	12 VDC COIL, DOUBLE LEADS (DDL12) (39002188)
8	1	284080-01	SWITCH, SOLENOID ASSY
9	1	290215	VALVE 2P2W NC DELTA (38502314)
10	1	290047	VALVE CARTRIDGE 4WAY
11	1	290209	WASHER, .56 ID X 1.25 OD (61200504)
12	1	290208	PLUG, 9/16-18, PLASTIC TANK (35901162)
13	1	290214	RESERVOIR, PLASTIC, 8.00 LG (32301528)
14	1	906781-01	PUMP ASSY,203,GPT P/D
15	1	268174-01	RELIEF VALVE,ADJUST,1100PSI
16	1	906930-01	RELIEF VALVE "RV1" SET @ 2400 PSI
17	1	908016-01	GROMMET, RUBBER, .60 ID

**NOTE:** Preferred decal layout is shown. Decals on the Liftgate are attached at the factory. If vehicle does not permit this layout, decals in the manual and decal kit must be applied so that they are easily visible when approaching vehicle to operate Liftgate. Use good common sense when locating these decals on vehicle.

**CAUTION**  
Always stand clear of platform area.  
PIN 202522-01 (F)

**WARNING**  
Read this information carefully.

- Improper operation of this Liftgate can result in serious personal injury. If you do not have a copy of the operating instructions, please obtain them from your employer, distributor, or dealer before you attempt to operate Liftgate.
- If there are signs of improper maintenance, damage to vital parts, or slippery platform surface, do not use the Liftgate until these problems have been corrected.
- If you are using a pallet jack, be sure it can be maneuvered safely.
- Do not operate a forklift on the platform.
- Do not allow any part of yours or your helper's body to be placed under, within, or around any portion of the moving Liftgate, or its mechanisms, or in a position that would trap them between the platform and the ground or truck when the Liftgate is operated.
- If a helper is riding the platform with you, make sure you are both doing so safely and that you are not in danger of coming in contact with any moving or potentially moving obstacles.


**USE GOOD COMMON SENSE**

- If load appears to be unsafe, do not lift or lower it.

For a free copy of other manuals that pertain to this model Liftgate, please visit our website at [www.maxionlift.com](http://www.maxionlift.com) or call Customer Service at (800) 327-4116. PIN 202522-01 (C)

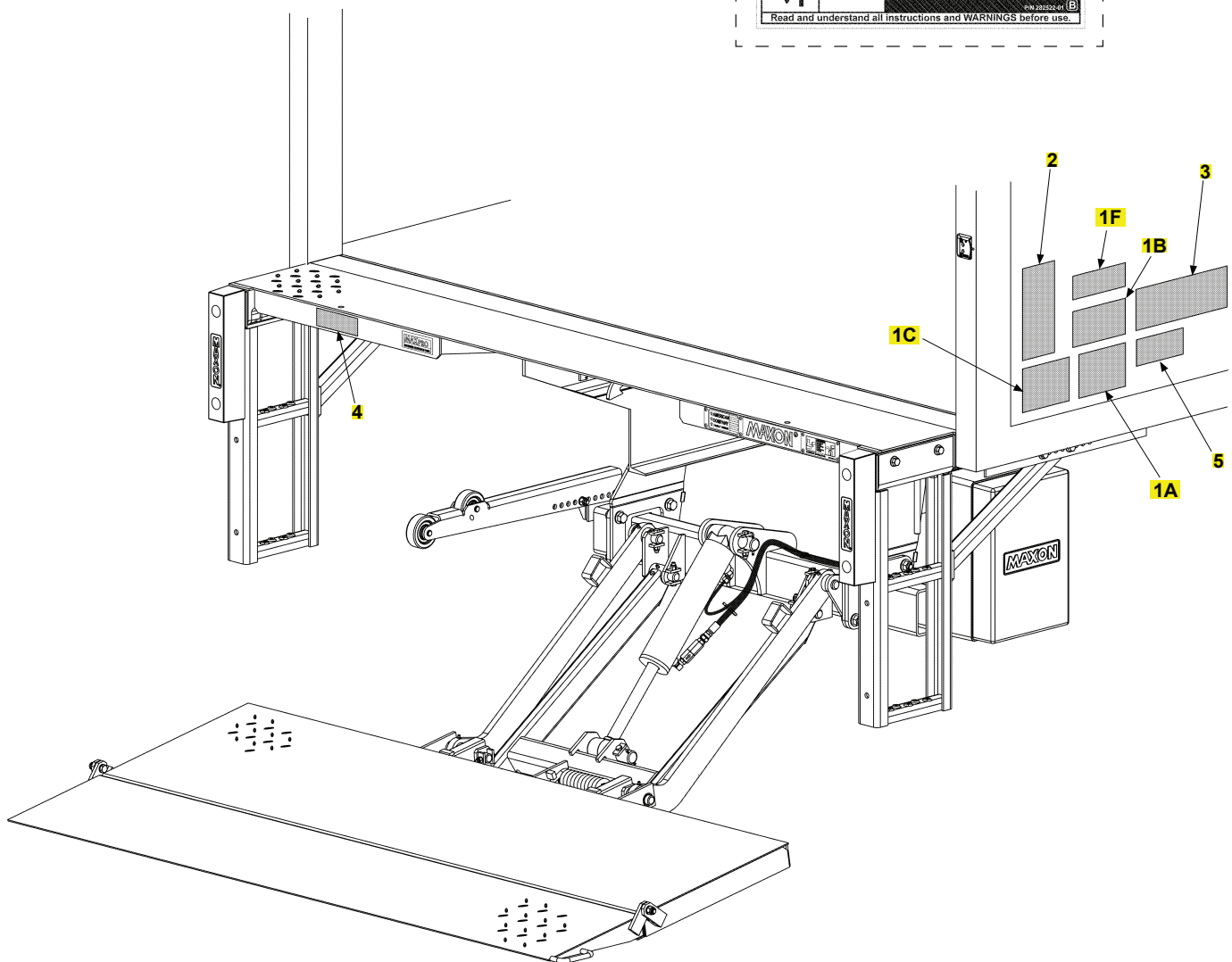
**SAFETY INSTRUCTIONS**  
Read all decals and operation manual before operating liftgate.

1. Do not use liftgate unless you have been properly instructed and have read, and are familiar with, the operating instructions.
2. Be certain vehicle is properly and securely braked before using the liftgate.
3. Always inspect this liftgate for maintenance or damage before using it. Do not use liftgate if it shows any sign of damage or improper maintenance.
4. Do not overload.
5. Make certain the area in which the platform will open and close is clear before opening or closing the platform.
6. Make certain platform area, including the area in which loads may fall from platform, is clear before and at all times during operation of liftgate.
7. This liftgate is intended for loading and unloading of cargo only. Do not use this liftgate for anything but its intended use. PIN 202522-01 (A)



**WARNING**  
Liftgate hazards can result in crushing or falling.  
Keep hands and feet clear of pinch points.  
If riding liftgate, make sure load is stable and footing is solid.  
PIN 202522-01 (B)

Read and understand all instructions and WARNINGS before use.



**TE-15/20 DECAL**

<b>ITEM</b>	<b>QTY.</b>	<b>PART NO.</b>	<b>DESCRIPTION</b>
1	1	282522-01	DECAL SHEET,SM WARN & CAUTION
1A	1	282522-01	DECAL SHEET,SM WARN & CAUTION
1B	1	282522-01	DECAL SHEET,SM WARN & CAUTION
1C	1	282522-01	DECAL SHEET,SM WARN & CAUTION
1F	1	282522-01	DECAL SHEET,SM WARN & CAUTION
2	1	285800-01	DECAL, STD TUK-A-WAY OPER INSTRUC
3	1	282847-02	DECAL, WARNING,STOW,TUK-A-WAY
4	1	265736-03	DECAL WARNING PINCH HAZARD
5	1	220386	DECAL 1500# CAPACITY
		220387	DECAL 2000# CAPACITY 2X3.7