

To search for your Maxon parts in this document, press Ctrl + F for Windows or Command + F for macOS to open the Search Box.

**MAXON**<sup>®</sup>

This parts manual covers all TE-33's manufactured December 2012 to February 2018. If your model is older then please contact Maxon CS at 800.227.4116 or [parts@maxonlift.com](mailto:parts@maxonlift.com).

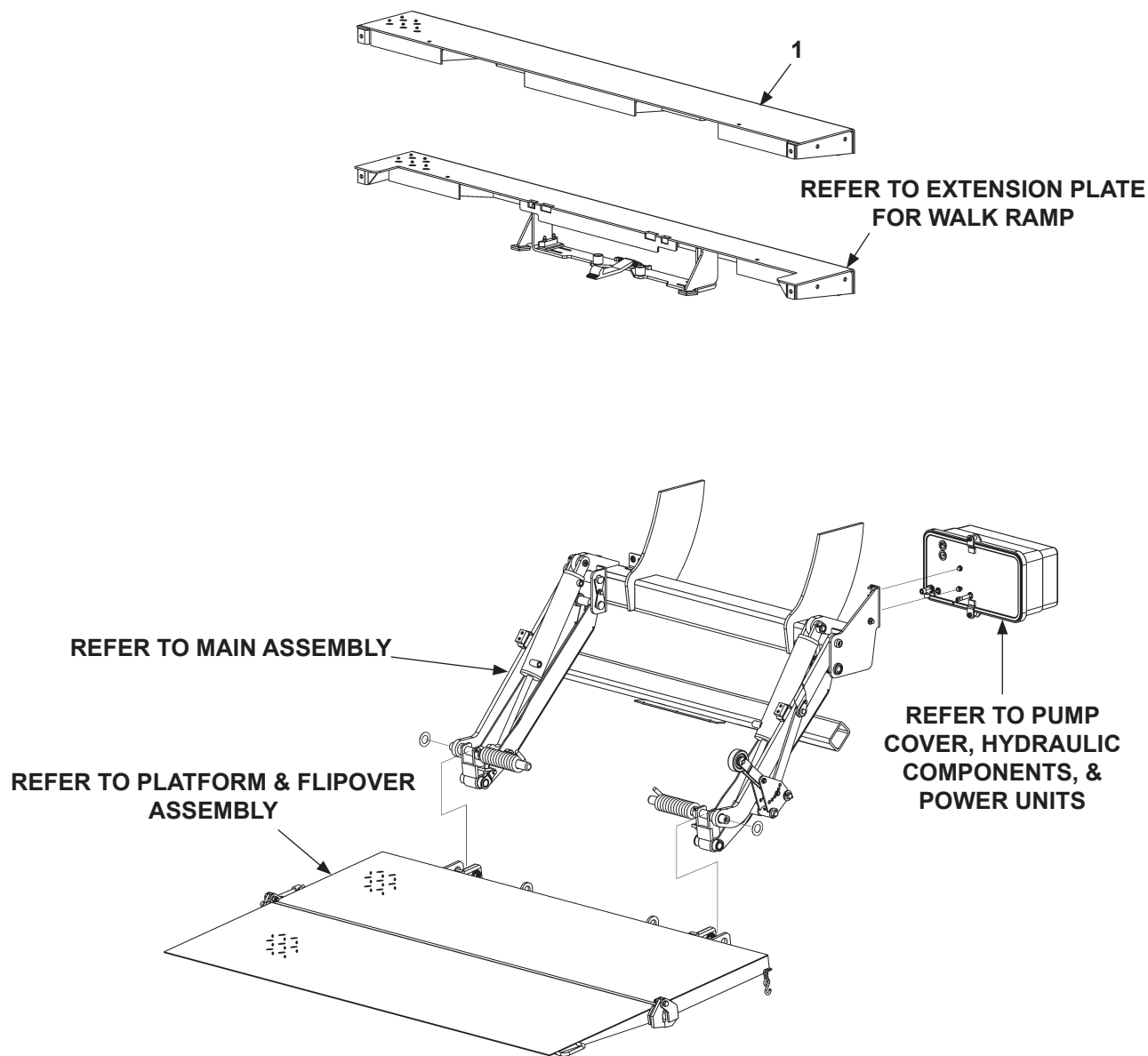
**TUK-A-WAY<sup>®</sup>**  
**TE-33**

**PARTS BREAKDOWN**



# FINAL ASSEMBLY

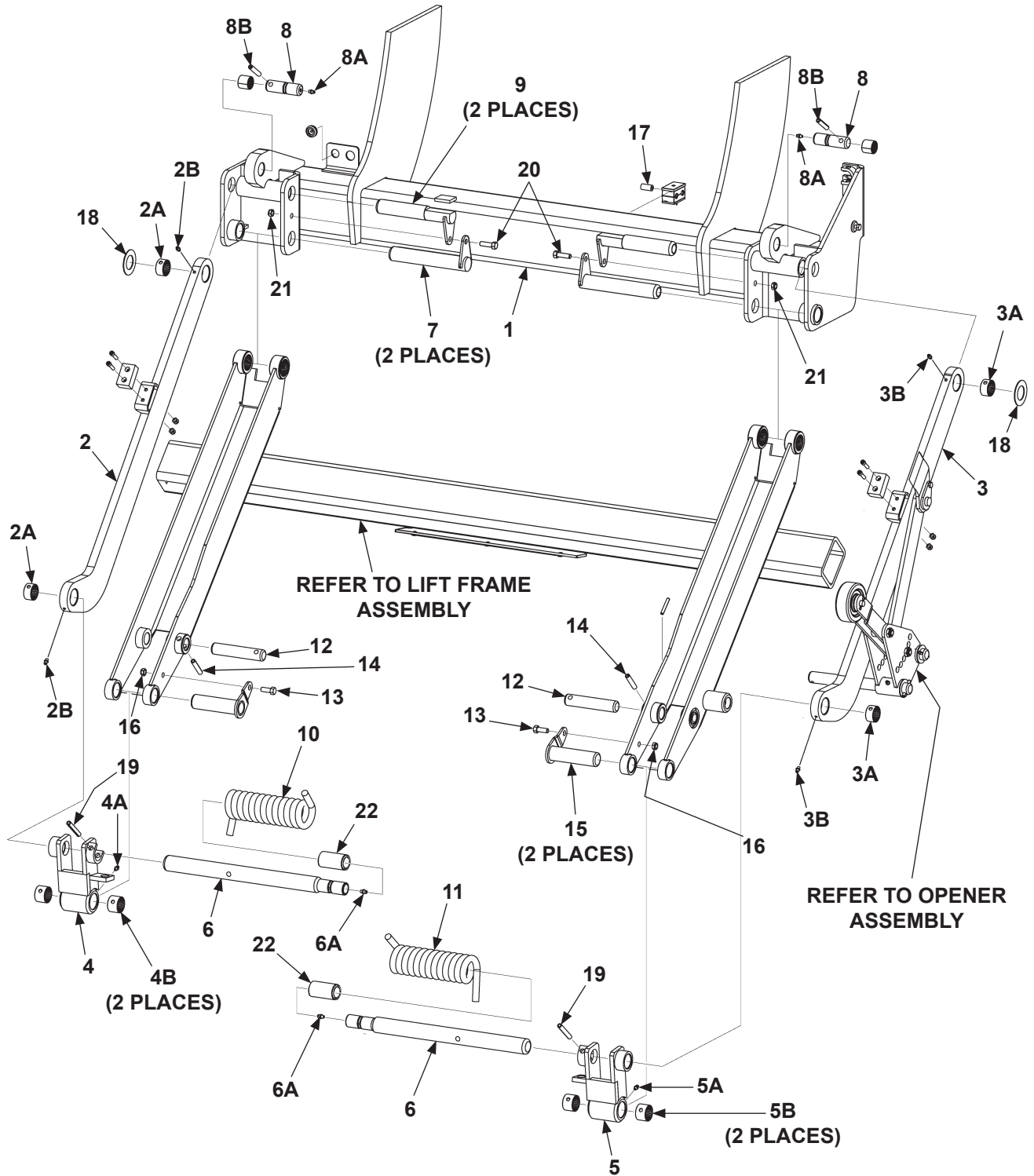
LAST UPDATED  
DEC 2012 to FEB 2018



ITEM	QTY.	PART NO.	DESCRIPTION
1	1	284136-01	EXTENSION PLATE (96" LG.)
		284136-02	EXTENSION PLATE (102" LG.)

# MAIN ASSEMBLY

LAST UPDATED  
DEC 2012 to FEB 2018



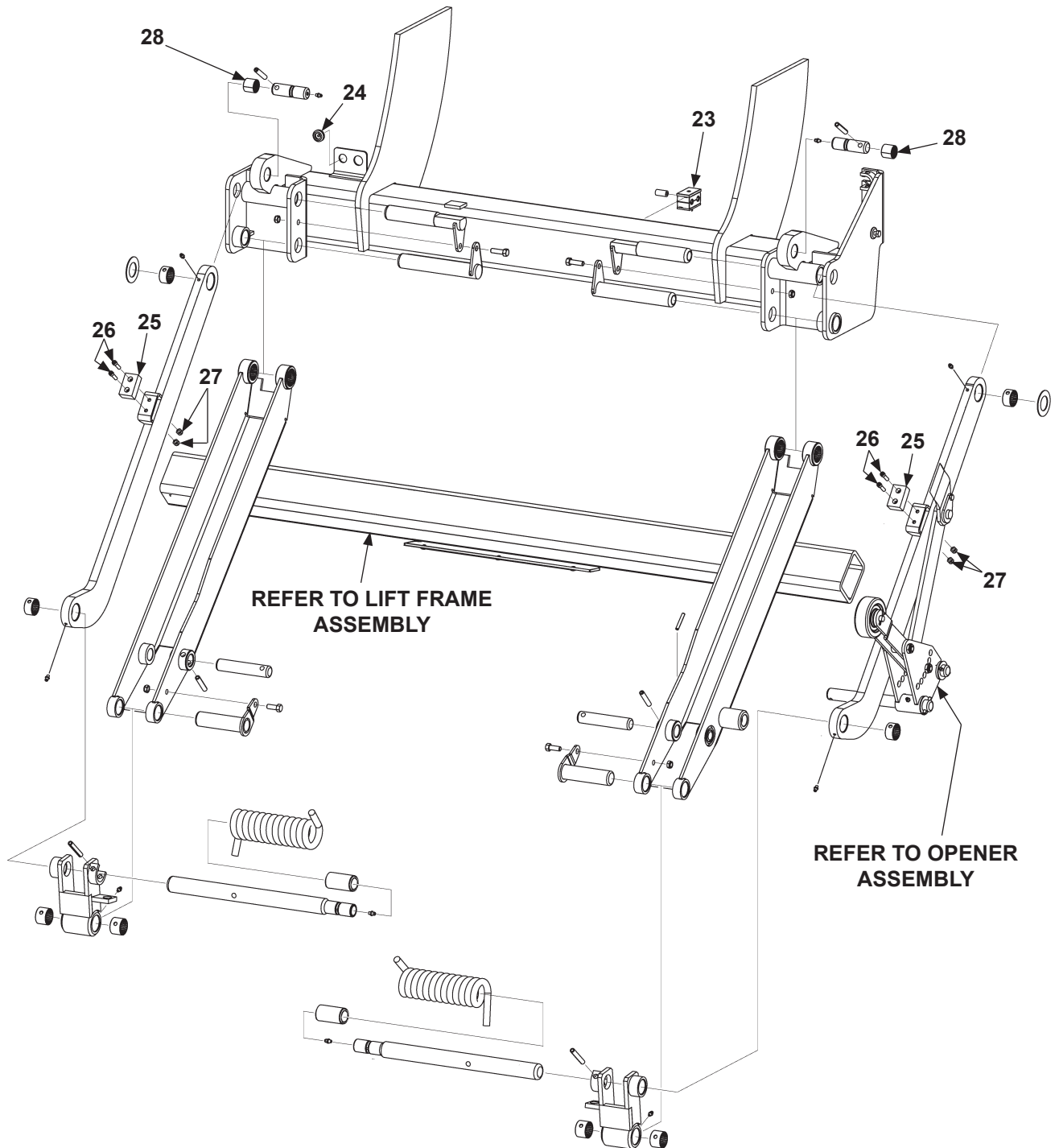
# MAIN ASSEMBLY

LAST UPDATED  
DEC 2012 to FEB 2018

ITEM	QTY	PART NO.	DESCRIPTION
1	1	284148-01	MAIN FRAME WELDMENT, TE-33
2	2	285050-01	PARALLEL ARM ASSEMBLY, LH
2A	4	908177-01	PRE-LUBRICATING BEARING, 1-1/4" ID X 3/4" LG.
2B	2	224342	GREASE FITTING, 1/4" SELF DRILLING
3	2	284215-02	PARALLEL ARM ASSEMBLY, RH
3A	4	908177-01	PRE-LUBRICATING BEARING, 1-1/4" ID X 3/4" LG.
3B	2	224342	GREASE FITTING, 1/4" SELF DRILLING
4	1	284215-01	SHACKLE ASSEMBLY, LH
4A	1	224342	GREASE FITTING, 1/4" SELF DRILLING
4B	2	908177-02	PRE-LUBRICATING BEARING, 1-1/4" ID X 1" LG.
5	1	284215-02	SHACKLE ASSEMBLY, RH
5A	1	224342	GREASE FITTING, 1/4" SELF DRILLING
5B	2	908177-02	PRE-LUBRICATING BEARING, 1-1/4" ID X 1" LG.
6	2	288348-01	SPRING PIN ASSEMBLY
6A	2	224342	GREASE FITTING, 1/4" SELF DRILLING
7	2	284174-01	LIFT/ARM PIN ASSEMBLY
8	2	284205-01	CYLINDER PIN ASSEMBLY
8A	2	224342	GREASE FITTING, 1/4" SELF DRILLING
8B	2	221416	ROLL PIN, 3/8" X 2" LG.
9	2	286742-01	PARALLEL ARM PIN WELDMENT
10	1	284541-01	TORSION SPRING, LH
11	1	284541-02	TORSION SPRING, RH
12	2	284207-01	CYLINDER PIN
13	2	030034	BOLT 3/8"- 24 X 1-1/4" LG., GRADE 8
14	2	904717-08	ROLL PIN, 3/8" X 2-1/2" LG.
15	2	284210-01	PIN ASSEMBLY, SHACKLE
16	2	226941	NYLON LOCK NUT, 3/8"-24 THIN
17	2	905350-10	RUBBER TUBING, 1/4" ID X 1/2" OD X 1" LG. (GD ONLY)
18	2	908189-01	FIBERGLIDE THRUST BEARING, 1-1/4" ID
19	2	904717-08	ROLL PIN, 3/8" X 2-1/2" LG.
20	2	030035	BOLT 3/8"- 24 X 1-1/4" LG., GRADE 8
21	4	226941	LOCK NUT, 3/8"- 24, NYLON
22	2	285098-01	BUSHING ASSEMBLY, PLATFORM SPRING

# MAIN ASSEMBLY - Continued

LAST UPDATED  
DEC 2012 to FEB 2018

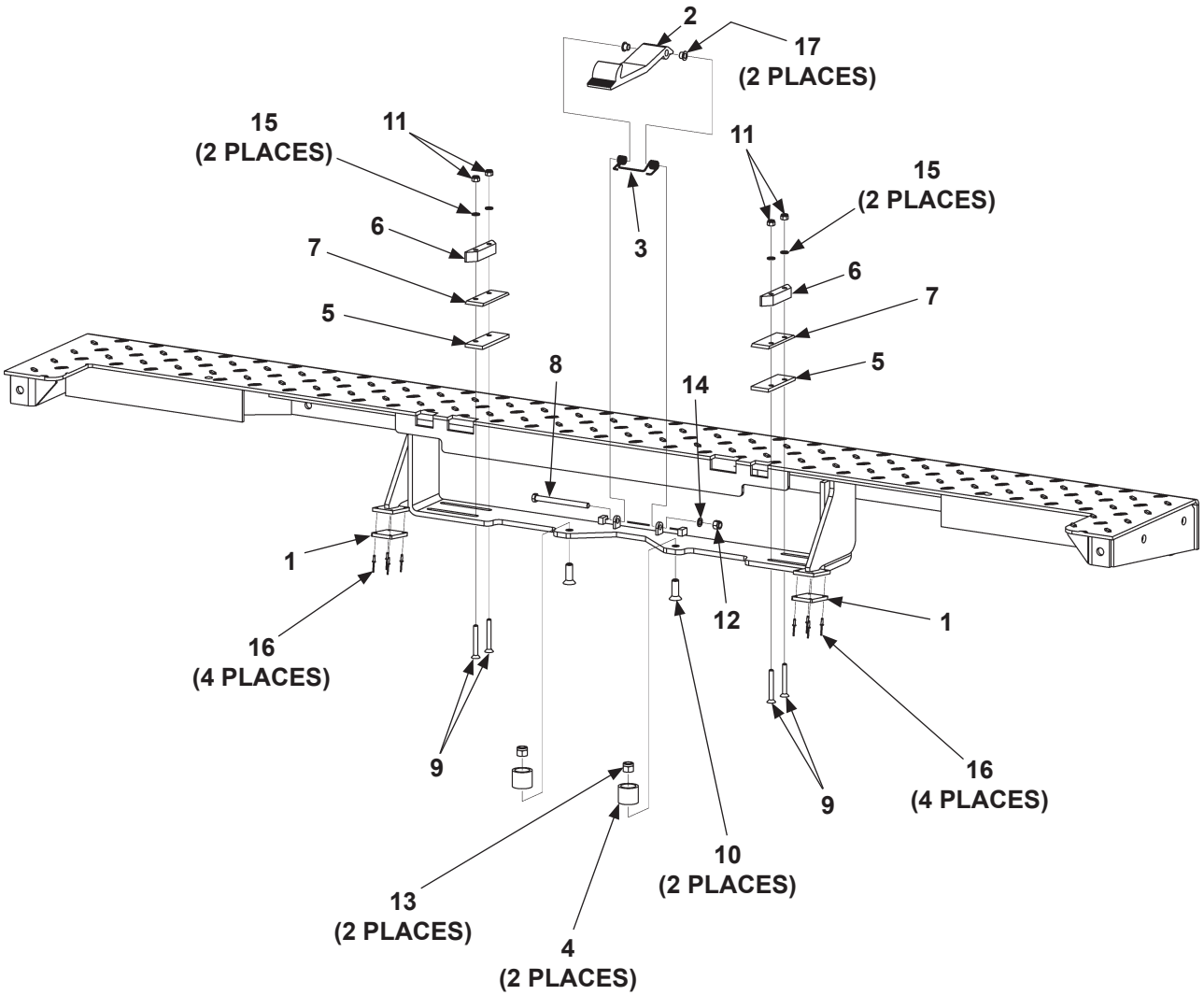


**MAIN ASSEMBLY - Continued****LAST UPDATED  
DEC 2012 to FEB 2018**

<b>ITEM</b>	<b>QTY</b>	<b>PART NO.</b>	<b>DESCRIPTION</b>
<b>23</b>	1	908190-01	DUAL HOSE CLAMP
<b>24</b>	1	281068-01	GROMMET, 3/16" HOLE DIA. (GRAVITY DOWN ONLY)
<b>25</b>	2	285058-01	PLATFORM SUPPORT PAD, NYLON
<b>26</b>	4	900025-01	SOCKET HEAD CAP SCREW, 1" LG.
<b>27</b>	4	901000	NUT, 1/4", SELF-LOCKING
<b>28</b>	2	908178-02	PRELUBE BEARING, 1" I.D. X 1" LG.

# EXTENSION PLATE FOR WALK RAMP

LAST UPDATED  
DEC 2012 to FEB 2018



# EXTENSION PLATE FOR WALK RAMP

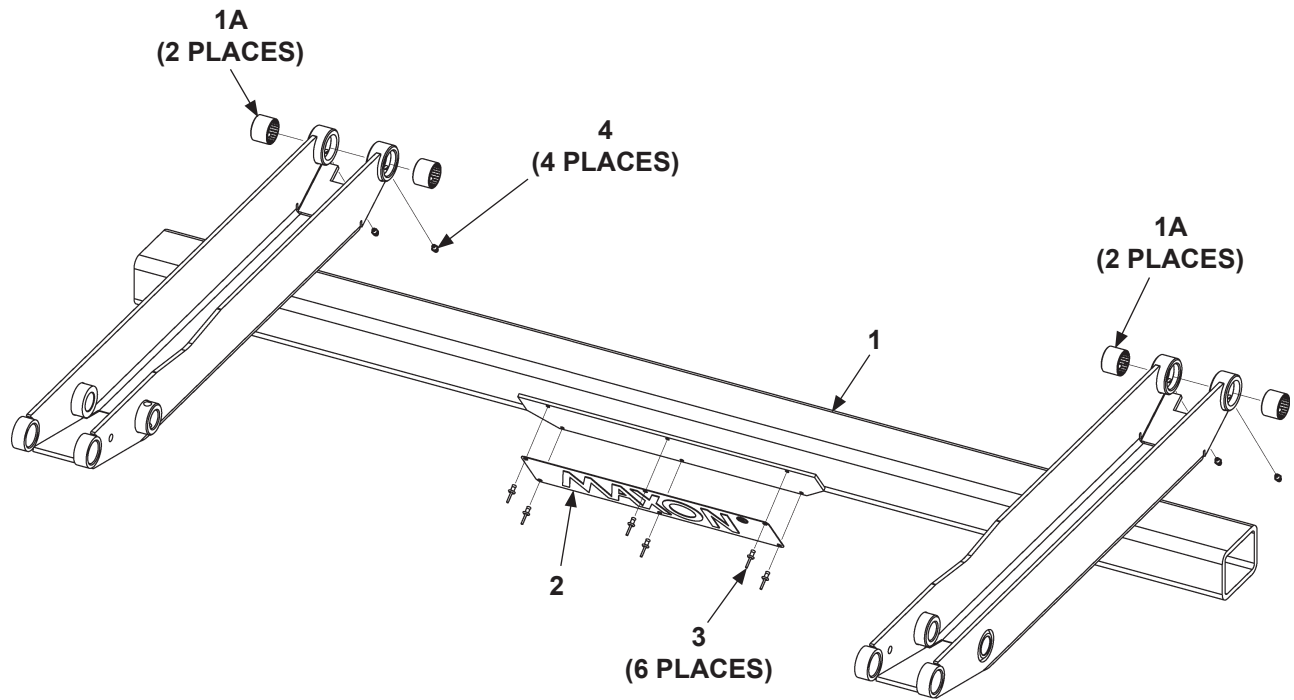
LAST UPDATED  
DEC 2012 to FEB 2018

ITEM	QTY.	PART NO.	DESCRIPTION
REF	1	269480-01	EXTENSION PLATE (96" LG, FOR WALK RAMP)
		269480-02	EXTENSION PLATE (102" LG, FOR WALK RAMP)
1	2	269478-01	PAD, PLATFORM STOPPER
2	1	282257-01	LATCH, WALK RAMP
3	1	282258-01	SPRING, WALK RAMP LATCH
4	2	282344-01	STOPPER
5	2	282346-01	FLAT
6	2	282347-01	PAD, WALK RAMP
7	2	282348-01	FLAT, SPACER
8	1	900014-15	HEX CAP SCREW, 3/8"-16 X 4-1/2" LG, GRADE 8
9	4	900021-9	SOCKET SCREW, 5/16"-18 X 2-1/2" LG.
10	2	900745-04	SOCKET SCREW, 1/2"-13 X 1-1/2" LG.
11	4	901001	LOCK NUT, 5/16"-18, NYLON
12	1	901002	LOCK NUT, 3/8"-16, NYLON
13	2	901010	LOCK NUT, 1/2"-13, NYLON
14	1	902000-10	FLAT WASHER, 3/8" X .063" THK
15	4	902000-8	FLAT WASHER, 5/16" X .063" THK
16	8	904000-2	RIVET, BLIND, 1/8" DIA. X .515" LG.
17	2	908094-01	FLANGE BEARING, 3/8" I.D. X 3/8" LG.



# LIFT FRAME ASSEMBLY

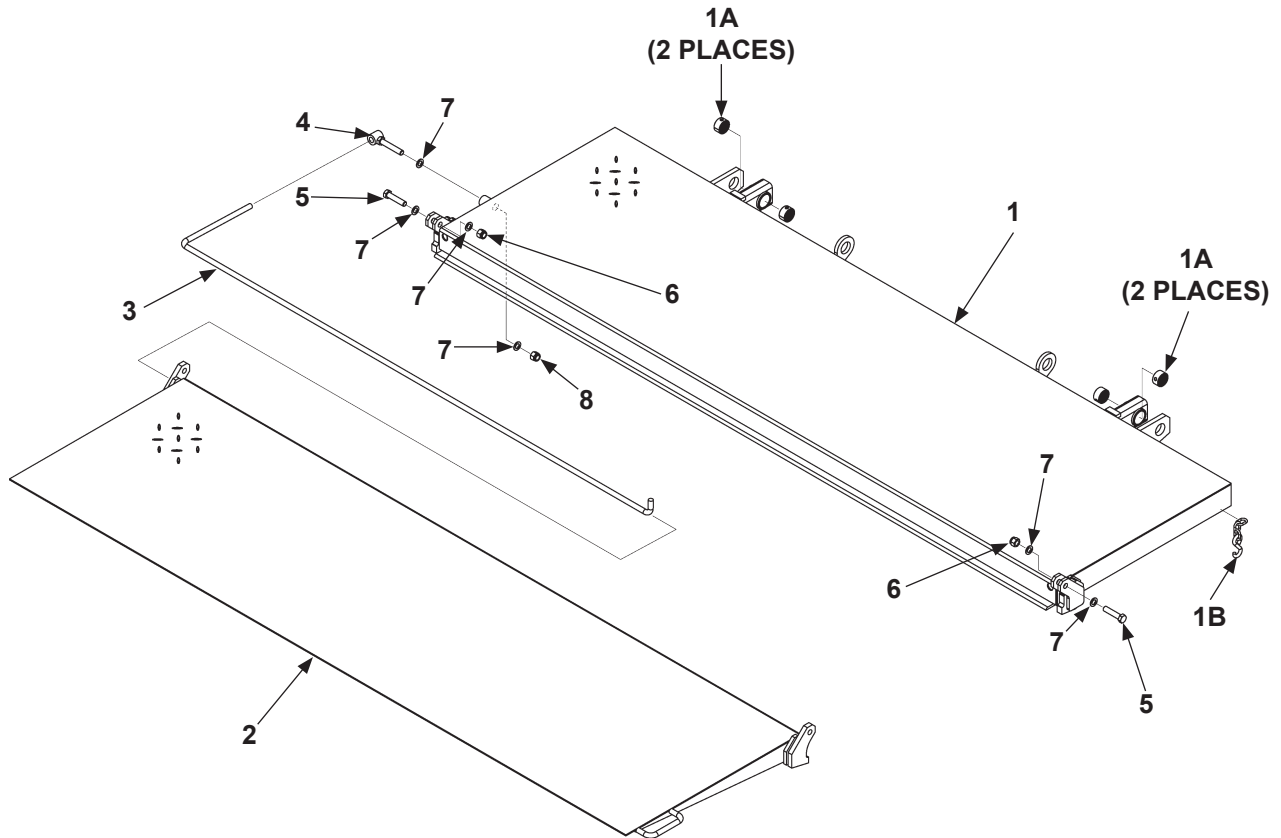
LAST UPDATED  
DEC 2012 to FEB 2018



ITEM	QTY	PART NO.	DESCRIPTION
1	1	284944-01	LIFT FRAME WELDMENT
1A	4	908177-02	PRELUBE BEARING 1-1/4" I.D. X 1" LG.
2	1	050175	MAXON PLATE, HORIZONTAL, 3-1/4" X 15" LG.
3	6	207644-01	BLIND RIVET 3/16" X 7/16" DOME
4	4	224342	GREASE FITTING, 1/4" SELF DRILLING

# PLATFORM ASSEMBLY & FLIPOVER ASSEMBLY

LAST UPDATED  
DEC 2012 to FEB 2018



ITEM	QTY.	PART NO.	DESCRIPTION
1	1	284140-01	PLATFORM WELDMENT, 24" X 84"
		284140-02	PLATFORM WELDMENT, 26" X 84"
		284140-03	PLATFORM WELDMENT, 24" X 84" (WALK RAMP)
		284140-04	PLATFORM WELDMENT, 26" X 84" (WALK RAMP)
1A	4	908177-01	BEARING PRELUBE 1-1/4" I.D. X 3/4" LG.
1B	1	260458	"S" HOOK, SIZE 80, 1-3/4" LG.
2	1	284135-01	FLIPOVER WELDMENT, 24" X 84"
		284135-02	FLIPOVER WELDMENT, 26" X 84"
3	1	280751-01	TORSION BAR
4	1	280749-02	ANCHOR BOLT WELDMENT
5	2	900033-6	CAP SCREW, 1/2"-20 X 2-1/4" LG.
6	2	901008	NUT, 1/2"-20, NYLON
7	6	902000-14	FLAT WASHER 1/2" X 7/64"
8	1	901010	LOCK NUT, 1/2"-13, NYLON



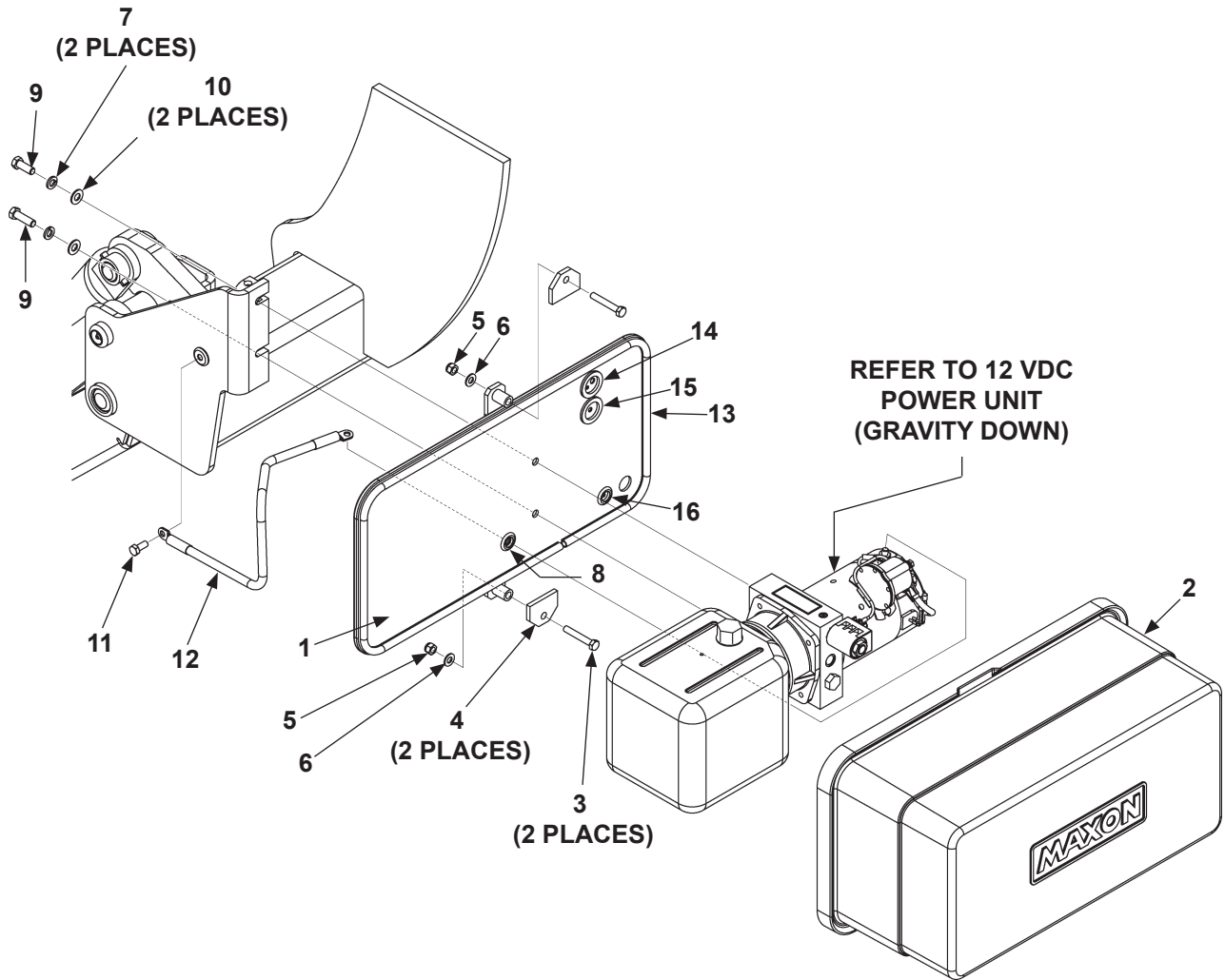
# OPENER ASSEMBLY

LAST UPDATED  
DEC 2012 to FEB 2018

ITEM	QTY.	PART NO.	DESCRIPTION
1	REF	286541	OPENER ASSEMBLY
1A	1	286540-01G	OPENER WLDMT, GALV
1B	1	280082-01	OPENER ROLLER, 3-1/2" X 1-1/4" X 1/2" HOLE
1C	1	905212-04	CLEVIS PIN, 1/2" X 2-1/4" LG.
1D	1	030805	COTTER PIN, 1/8" X 1" LG.
2	2	900033-7	CAP SCREW, 1/2"-20 X 2-1/4" LG, GR8
3	2	901016-1	HEX NUT, 1/2"-20
4	REF	286536-01	OPENER BRACKET ASSEMBLY
4A	1	286535-01G	OPENER BRACKET WLDMT, GALV
4B	4	908178-01	PRELUBE BEARING, 1" I.D. X 3/4" LG
4C	2	224342	GREASE FITTING, 1/4" SELF DRILLING
5	2	902000-25	FLAT WASHER, 1"
6	1	286544-01	PIN WLDMT, OPENER ARM
7	1	900000-4	HEX BOLT, 1/4"-20 X 1" LG, GR8
8	1	901000	LOCK NUT, 1/4"-20
9	2	902020-1	NYLON FLAT WASHER, 1-5/16"
10	1	286538-01	ARM WLDMT
11	3	904726-11	ROLL PIN, 1/4" X 1-5/8" LG.
12	1	286531-01	PIN, OPENER

# PUMP ASSEMBLY (GRAVITY DOWN)

LAST UPDATED  
DEC 2012 to FEB 2018



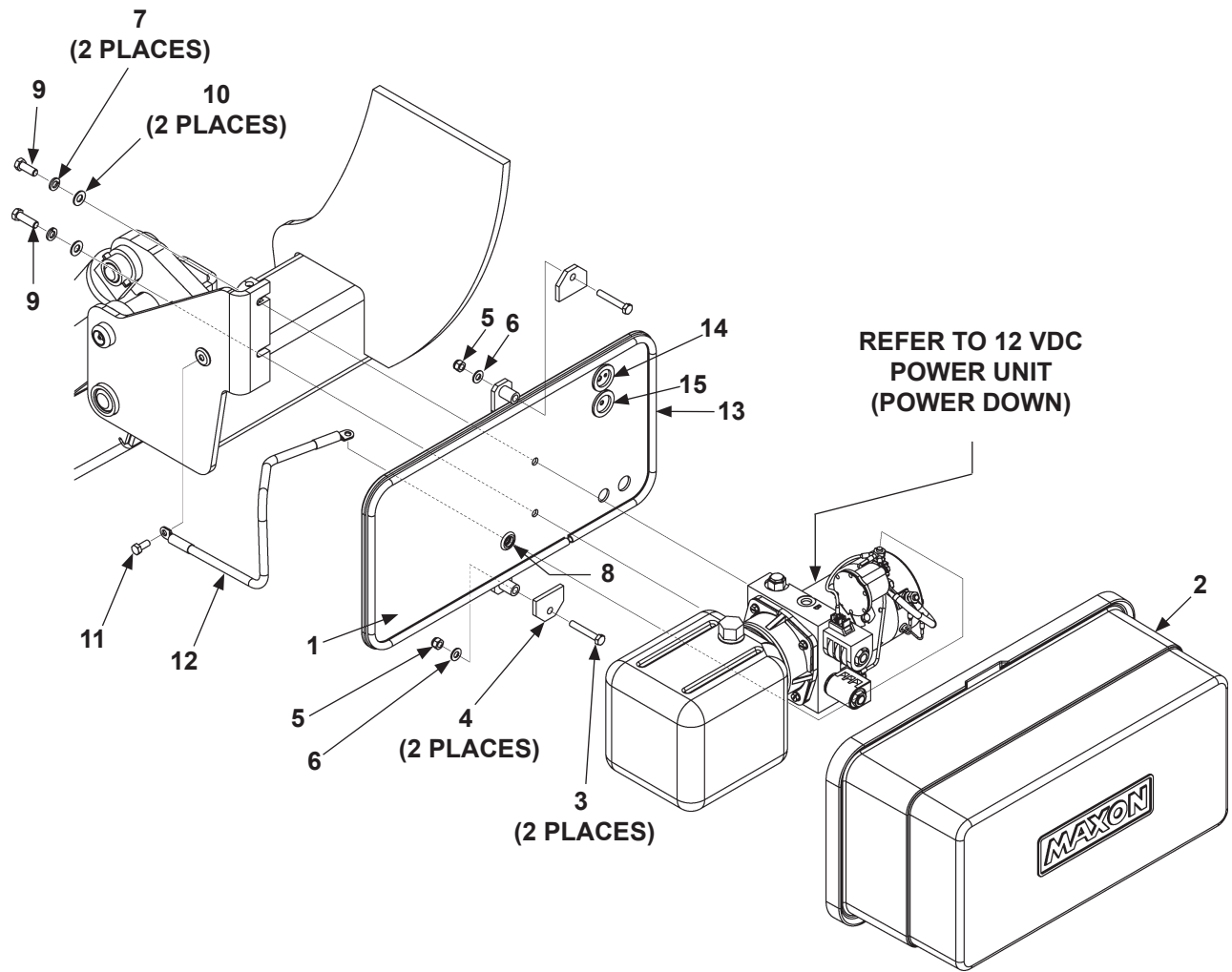
# PUMP ASSEMBLY (GRAVITY DOWN)

LAST UPDATED  
DEC 2012 to FEB 2018

ITEM	QTY.	PART NO.	DESCRIPTION
REF	1	269450-01	PUMP ASSEMBLY, HEAVY DUTY, GRAVITY DOWN
		269450-01G	PUMP ASSEMBLY, HEAVY DUTY, GD, GALVANIZED
1	1	269447-01	PLATE, PUMP MOUNT
		269447-01G	PLATE, PUMP MOUNT, GALVANIZED
2	1	281038-02	HORIZONTAL PUMP COVER
3	2	900009-8	CAP SCREW, 5/16"-18 X 2" LG., GRADE 8
4	2	281062-02	FLAT HOLDER, 1-1/2" LG.
5	2	901001	LOCK NUT, 5/16"-18, NYLON
6	2	902013-10	FLAT WASHER, 5/16"
7	2	902011-4	LOCK WASHER, 3/8"
8	1	281068-03	MODIFIED GROMMET
9	2	900014-5	HEX HEAD CAP SCREW, 3/8"-16 X 1-1/4" LG., GRADE 8
10	2	902001-1	FLAT WASHER, 3/8" X 1/8" THK
11	1	900009-3	HEX CAP SCREW, 5/16"-18 X 3/4" LG.
12	1	269191-03	CABLE ASSEMBLY, GROUND, 2 GAUGE X 20" LG.
13	1	093203-10	NEOPRENE BULB, TRIM SEAL, 60" LG.
14	1	266428-08	GROMMET, 1" DIA. - 3/16" & 5/16" HOLES
15	1	266428-02	GROMMET, 1" DIA. - 1/4" HOLE
16	1	281068-01	RUBBER GROMMET

# PUMP ASSEMBLY (POWER DOWN)

LAST UPDATED  
DEC 2012 to FEB 2018



# PUMP ASSEMBLY (POWER DOWN)

LAST UPDATED  
DEC 2012 to FEB 2018

ITEM	QTY.	PART NO.	DESCRIPTION
REF	1	285650-01	PUMP ASSEMBLY, HEAVY DUTY, POWER DOWN
		285650-01G	PUMP ASSEMBLY, HEAVY DUTY, PD, GALVANIZED
1	1	285651-01	PLATE, PUMP MOUNT
		285651-01G	PLATE, PUMP MOUNT, GALVANIZED
2	1	281038-01	VERTICAL PUMP COVER
3	2	900009-8	CAP SCREW, 5/16"-18 X 2" LG., GRADE 8
4	2	281062-02	FLAT HOLDER, 1-1/2" LG.
5	2	901001	LOCK NUT, 5/16"-18, NYLON
6	2	902013-10	FLAT WASHER, 5/16"
7	2	902011-4	LOCK WASHER, 3/8"
8	1	281068-03	MODIFIED GROMMET
9	2	900014-5	HEX HEAD CAP SCREW, 3/8"-16 X 1-1/4" LG., GRADE 8
10	2	902001-1	FLAT WASHER, 3/8" X 1/8" THK
11	1	900009-3	HEX CAP SCREW, 5/16"-18 X 3/4" LG.
12	1	269191-03	CABLE ASSEMBLY, GROUND, 2 GAUGE X 20" LG.
13	1	093203-10	NEOPRENE BULB, TRIM SEAL, 60" LG.
14	1	266428-08	GROMMET, 1" DIA. - 3/16" & 5/16" HOLES
15	1	266428-02	GROMMET, 1" DIA. - 1/4" HOLE

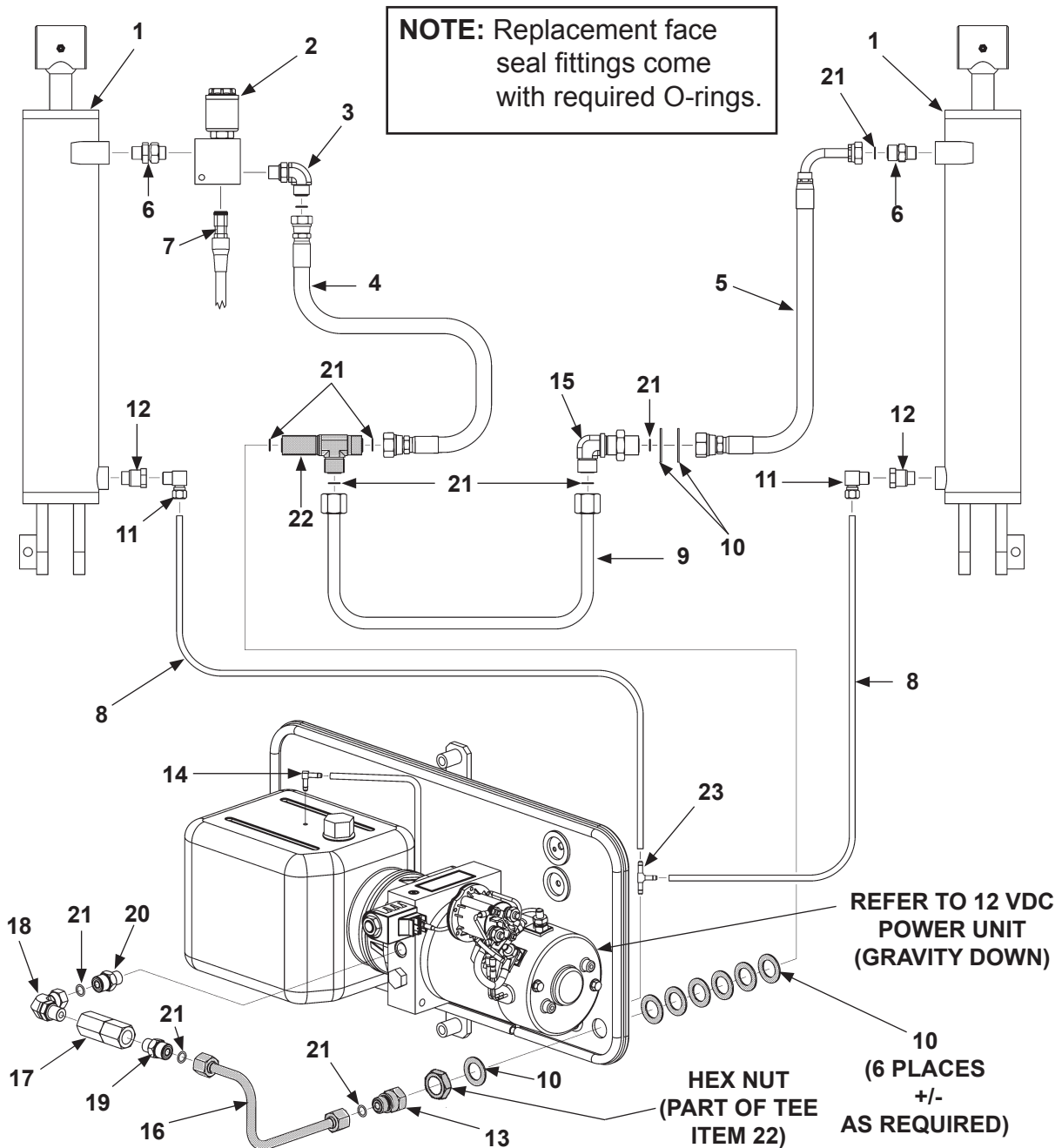


# CAUTION

If the Liftgate is equipped with a bumper (ICC-type), replacement hydraulic hoses must be routed with sufficient clearance from the bumper. The clearance prevents the hoses from rubbing or getting caught on the bumper.

**NOTE:** When replacing internal steel hydraulic line and bulkhead tee, ensure tee is shimmed correctly to mounting plate with **ITEM 10**.

- Fittings that connect lines to pump should be in correct position & tight.
- Steel line is installed fingertight while measuring gap between tee & mounting plate. Add correct number of shims to fill gap.
- Position and tighten the bulkhead tee and steel line fittings.



# HYDRAULIC COMPONENTS (GRAVITY DOWN)

LAST UPDATED  
DEC 2012 to FEB 2018

## CAUTION

To prevent misalignment, strain & damage to steel hydraulic lines inside pump box, ensure bulkhead tee (ITEM 22) is shimmed correctly to mounting plate. Shimming with ITEM 10 allows correct alignment of the face seals & removes strain from internal hydraulic lines.

## CAUTION

To prevent hydraulic lock from being damaged, torque replacement valve cartridge to 25 lbs.-ft. & coil nut to 4-6 lbs.-ft.

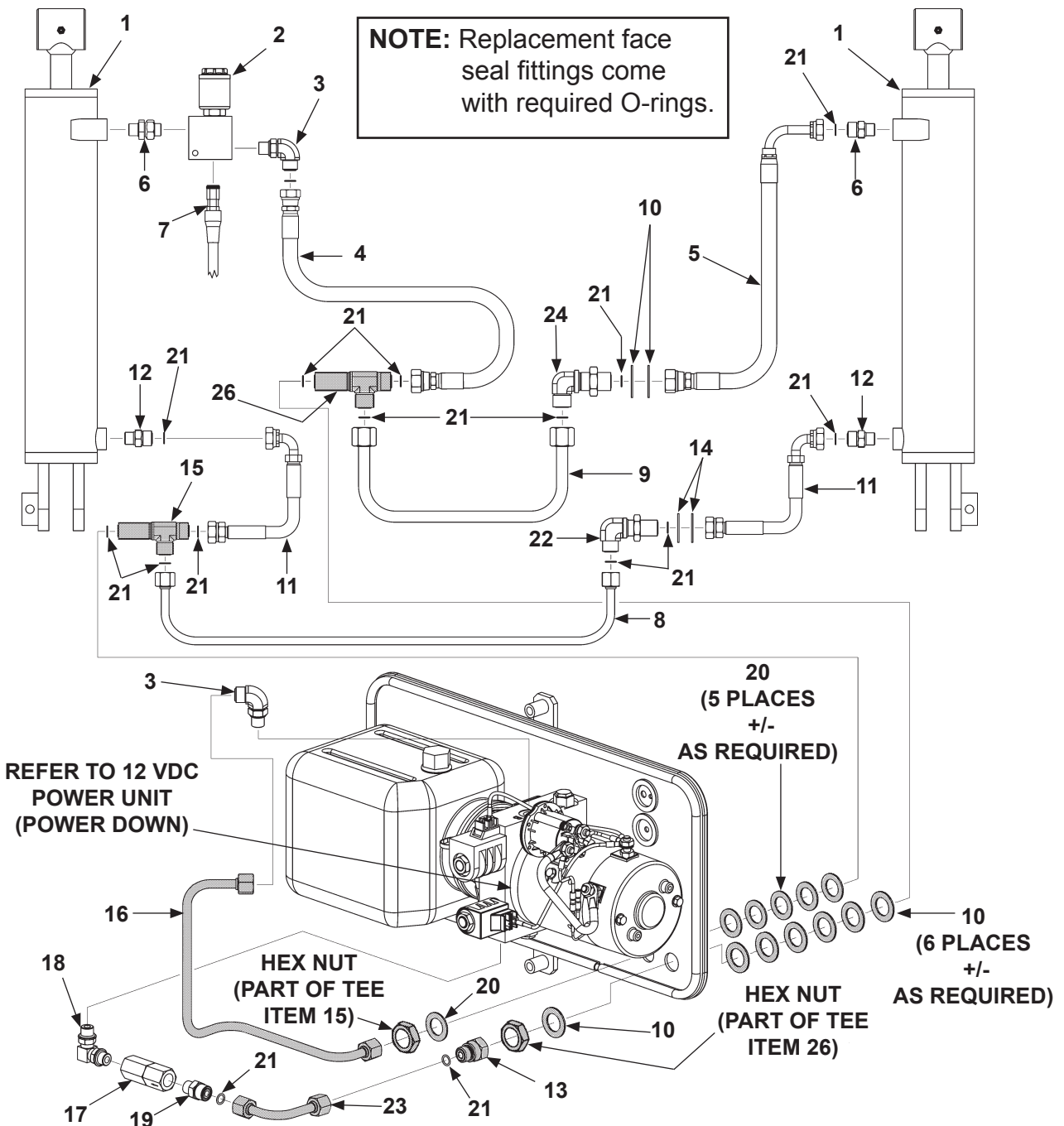
ITEM	QTY.	PART NO.	DESCRIPTION
1	2	284947-01	HYDRAULIC CYLINDER, 2.75" DIA, 12" STROKE, LH
		284947-02	HYDRAULIC CYLINDER, 2.75" DIA, 12" STROKE, RH
2	1	282999-01	HYDRAULIC LOCK VALVE ASSEMBLY
3	1	906707-01	ELBOW, 3/8" O.D., SAE #6
4	1	285027-01	HOSE ASSEMBLY, 3/8" HP, SAE #6 F & SAE #8 F
5	1	285659-01	HOSE ASSEMBLY, 3/8"HP, SAE #6 F & SAE #8 F, 25-5/8" LG.
6	1	906786-01	ADJUSTABLE UNION, STR SAE #6 M-M, O-RING,
7	1	282625-02	LOCK VALVE CABLE ASSEMBLY, 16/2 X 36"
8	1	905362-13	POLYURETHANE TUBING, 1/4" X 66" LG.
9	1	285656-01	FACE SEAL TUBE ASSEMBLY, TE-33
10	9	902028-14	FLAT WASHER, 1-7/16" O.D. X 7/8" I.D.
11	2	905142-04	BRASS FIT M ELBOW 1/4" TB X 1/4" NPT
12	2	228012	ADAPTER 9/16" - 18M - 1/4" F
13	1	906897-01	TUBE END REDUCER, ORFS #8-6
14	1	906767-01	UNION ELBOW, 1/4" TUBE O.D.
15	1	906858-01	BULKHEAD UNION ELBOW, ORFS #8
16	1	285653-01	FACE SEAL TUBE ASSEMBLY, TE-33
17	1	906709-03	FLOW VALVE REGULATOR #6 SAE, 3.0 GPM
18	1	906708-01	ELBOW, SAE #6 O-RING, M-F, SWIVEL
19	1	905173	FACE SEAL CONNECTOR #6 & O-RING #6, M-M
20	1	906744-01	BULKHEAD UNION SAE #6, FACE SEAL, M-M
21	9	906712-02	O-RING #6, 3/8" FACE SEAL, TUBE-END
22	1	906896-01	BULKHEAD RUN TEE, O-RING FACE SEAL, SAE #8
23	1	906749-01	UNION TEE, 1/4" TUBE O.D.

# CAUTION

If the Liftgate is equipped with a bumper (ICC-type), replacement hydraulic hoses must be routed with sufficient clearance from the bumper. The clearance prevents the hoses from rubbing or getting caught on the bumper.

**NOTE:** When replacing internal steel hydraulic lines and bulkhead tees, ensure tees are shimmed correctly to mounting plate with **ITEMS 10** and **20**.

- Fittings that connect lines to pump should be in correct position & tight.
- Steel line is installed fingertight while measuring gap between tee & mounting plate. Add correct number of shims to fill gap.
- Position and tighten the bulkhead tees and steel line fittings.



## HYDRAULIC COMPONENTS (POWER DOWN)

LAST UPDATED  
DEC 2012 to FEB 2018

### CAUTION

To prevent misalignment, strain & damage to steel hydraulic lines inside pump box, ensure bulkhead tees (ITEMS 15 & 26) are shimmed correctly to mounting plate. Shimming with ITEMS 20 & 10 allows correct alignment of the face seals & removes strain from internal hydraulic lines.

### CAUTION

To prevent hydraulic lock from being damaged, torque replacement valve cartridge to 25 lbs.-ft. & coil nut to 4-6 lbs.-ft.

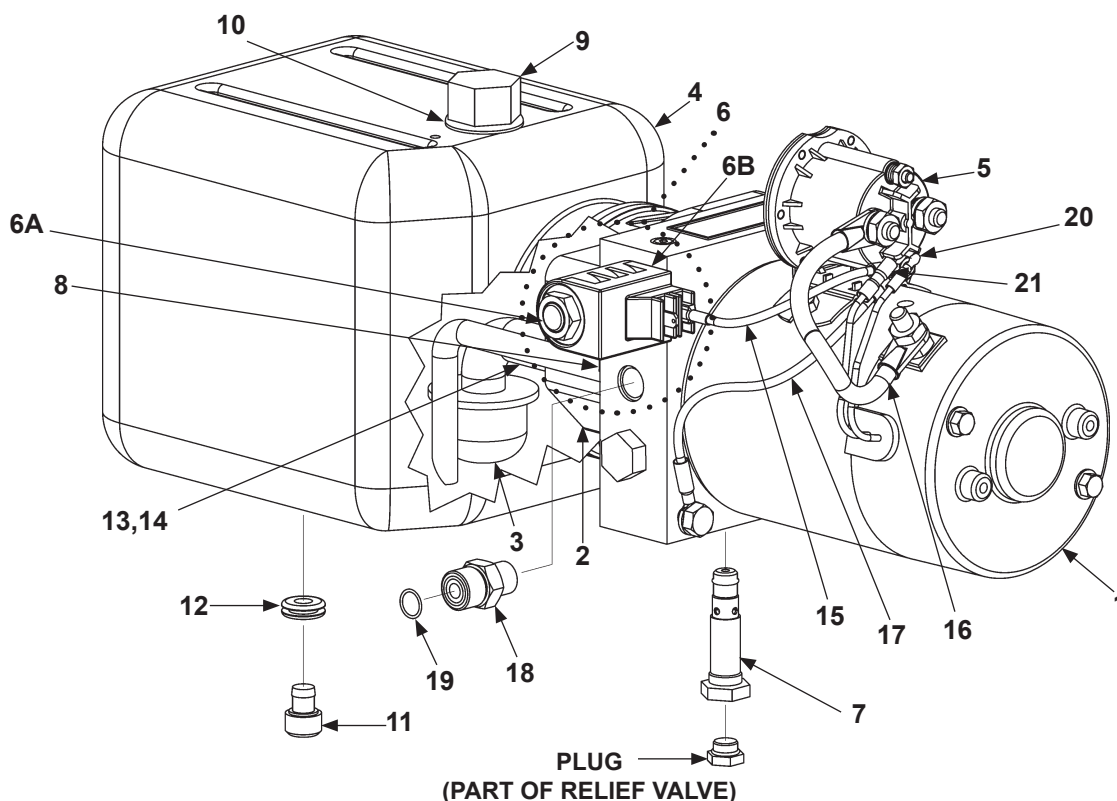
ITEM	QTY.	PART NO.	DESCRIPTION
1	2	284947-01	HYDRAULIC CYLINDER, 2.75" DIA, 12" STROKE, LH
		284947-02	HYDRAULIC CYLINDER, 2.75" DIA, 12" STROKE, RH
2	1	282999-01	HYDRAULIC LOCK VALVE ASSEMBLY
3	2	906707-01	ELBOW, 3/8" O.D., SAE #6
4	1	285027-01	HOSE ASSEMBLY, 3/8"HP, SAE #6 F & SAE #8 F
5	1	285659-01	HOSE ASSEMBLY, 3/8"HP, SAE #6 F & SAE #8 F, 25-5/8" LG.
6	1	906786-01	ADJUSTABLE UNION, STR SAE #6 M-M,O-RING,
7	1	282625-02	LOCK VALVE CABLE ASSEMBLY, 16/2 X 36"
8	1	285655-01	FACE SEAL TUBE ASSEMBLY, TE-33
9	1	285656-01	FACE SEAL TUBE ASSEMBLY, TE-33
10	9	902028-14	FLAT WASHER, 1-7/16" O.D. X 7/8" I.D.
11	2	285027-01	HOSE ASSEMBLY, 3/8" HP, ORFS 6-8, FEM
12	2	228012	ADAPTER 9/16" - 18M -1/4" F
13	1	906897-01	TUBE END REDUCER, ORFS #8-6
14	2	902028-12	FLAT WASHER, 1-1/4" O.D. X 3/4" I.D.
15	1	906896-01	BULKHEAD RUN TEE, ORFS, SAE #8
16	1	285653-01	FACE SEAL TUBE ASSEMBLY, TE-33
17	1	906709-03	FLOW VALVE REGULATOR #6 SAE, 3.0 GPM
18	1	906708-01	NPSC ELBOW, SAE #6 O-R M-F SW
19	1	905173	FACE SEAL CONNECTOR #6 & O-RING #6, M-M
20	6	902028-12	FLAT WASHER,1-1/4" OD X 3/4" ID
21	15	906712-02	O-RING #6 (3/8" FACE SEAL, TUBE-END)
22	1	905162	BULKHEAD UNION ELBOW, F/S #6
23	1	285652-01	FACE SEAL TUBE ASSEMBLY, PDP
24	1	906858-01	BULKHEAD UNION ELBOW, O-RING FACE SEAL #8

### CAUTION

Do not over-tighten the terminal nuts on starter solenoid. For the load terminals, torque nuts to 40 lbs.-in. max. Torque the nuts on #10-32 control terminals 15-20 lbs.-in.

### CAUTION

To prevent damage when installing 2-way valves, torque valve cartridge nut to 30 lbs.-in. max.



## 12 VDC POWER UNIT (GRAVITY DOWN)

LAST UPDATED  
DEC 2012 to FEB 2018

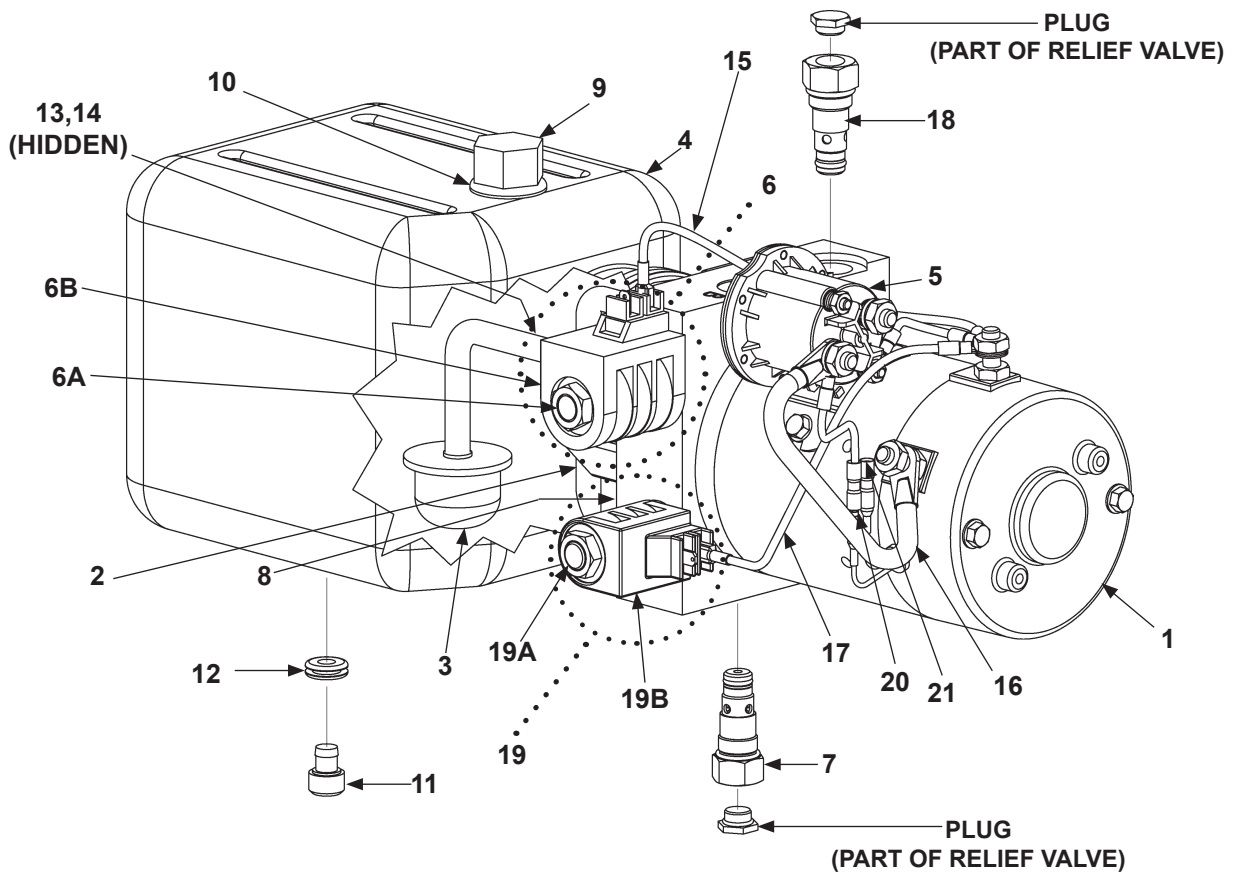
ITEM	QTY.	PART NO.	DESCRIPTION
REF	1	269399-01	12 VDC POWER UNIT (GRAVITY DOWN)
1	1	280374	12 VDC MOTOR
2	1	906781-01	PUMP ASSEMBLY
3	1	290034	FILTER, PUMP INLET
4	1	269444-01	RESERVOIR, 1-1/4 GAL, TE-33
5	1	284080-01	SWITCH, SOLENOID ASSEMBLY, 12 VDC
6	1	290043	VALVE ASSEMBLY, 2-WAY (DOUBLE SPADE)
6A	1	290044	VALVE CARTRIDGE (2-WAY VALVE)
6B	1	290045	COIL, DOUBLE SPADE (2-WAY VALVE)
7	1	906737-01	CARTRIDGE RELIEF VALVE
8	1	290061	SEAL, SQUARE CUT (FOR RESERVOIR)
9	1	280806-01	FILLER, BREATHER CAP
10	1	908016-01	GROMMET, RUBBER, 1/8" X 3/4" X 1"
11	1	908017-01	PLUG, DRAIN PORT
12	1	908018-01	GROMMET, RUBBER, 5/16" I.D.
13	1	260261	PUMP OIL SEAL
14	1	290020	O-RING (2-012, 70 DURO)
15	1	280416	WIRE ASSEMBLY
16	1	280404	CABLE ASSEMBLY
17	2	268027-01	WIRE ASSEMBLY, 18 GAUGE, (#10 & 5/16" RINGS)
18	1	905173	CONNECTOR, STR FACE SEAL / ORB, #6
19	1	906712-02	O-RING #6 (3/8" FACE SEAL, TUBE-END)
20	1	263345	MALE BULLET, 16 GAUGE
21	1	263346	FEMALE BULLET, 16 GAUGE

## CAUTION

Do not over-tighten the terminal nuts on starter solenoid. For the load terminals, torque nuts to 40 lbs.-in. max. Torque the nuts on #10-32 control terminals 15-20 lbs.-in.

## CAUTION

To prevent damage when installing 2-way valves, torque valve cartridge nut to 30 lbs.-in. max.



## 12 VDC POWER UNIT (POWER DOWN)

LAST UPDATED  
DEC 2012 to FEB 2018

ITEM	QTY.	PART NO.	DESCRIPTION
REF	1	285548-01	12 VDC POWER UNIT (POWER DOWN)
1	1	280374	12 VDC MOTOR
2	1	906781-01	PUMP ASSEMBLY
3	1	290034	FILTER, PUMP INLET
4	1	285547-01	RESERVOIR, 1-1/4 GAL, TE-33
5	1	284080-01	SWITCH, SOLENOID ASSEMBLY, 12 VDC
6	1	290046	VALVE ASSEMBLY, 4-WAY (DOUBLE SPADE)
6A	1	290047	VALVE CARTRIDGE (4-WAY VALVE)
6B	1	290048	COIL, DOUBLE SPADE (4-WAY VALVE)
7	1	906738-02	ADJUSTIBLE HIGH PRESSURE RELIEF VALVE
8	1	290061	SEAL, SQUARE CUT (FOR RESERVOIR)
9	1	280806-01	FILLER, BREATHER CAP
10	1	908016-01	GROMMET, RUBBER, 1/8" X 3/4" X 1" LG.
11	1	908017-01	PLUG, DRAIN PORT
12	1	908018-01	GROMMET, RUBBER, 5/16" I.D.
13	1	260261	OIL SEAL, PUMP
14	1	290020	O-RING (2-012, 70 DURO)
15	1	285891-01	WIRE ASSEMBLY, 5/16" RING - Q. DISCONNECT
16	1	280404	CABLE ASSEMBLY
17	2	284161-02	WIRE, 18 GAUGE
18	1	268174-01	ADJUSTIBLE RELIEF VALVE, LOW PRESSURE
19	1	290043	VALVE ASSEMBLY, (2-WAY, DOUBLE SPADE)
19A	1	906822-01	VALVE CARTRIDGE (2-WAY VALVE)
19B	1	290045	COIL, DOUBLE SPADE (2-WAY VALVE)
20	1	263345	MALE BULLET, 16 GUAGE
21	1	263346	FEMALE BULLET, 16 GUAGE



# CONTROL SWITCH AND POWER CABLE

LAST UPDATED  
DEC 2012 to FEB 2018

**NOTE:** Use switch to raise and lower Liftgate to make sure switch operates as shown on the decal.

**NOTE:** MAXON recommends using dielectric grease on all electrical connections.

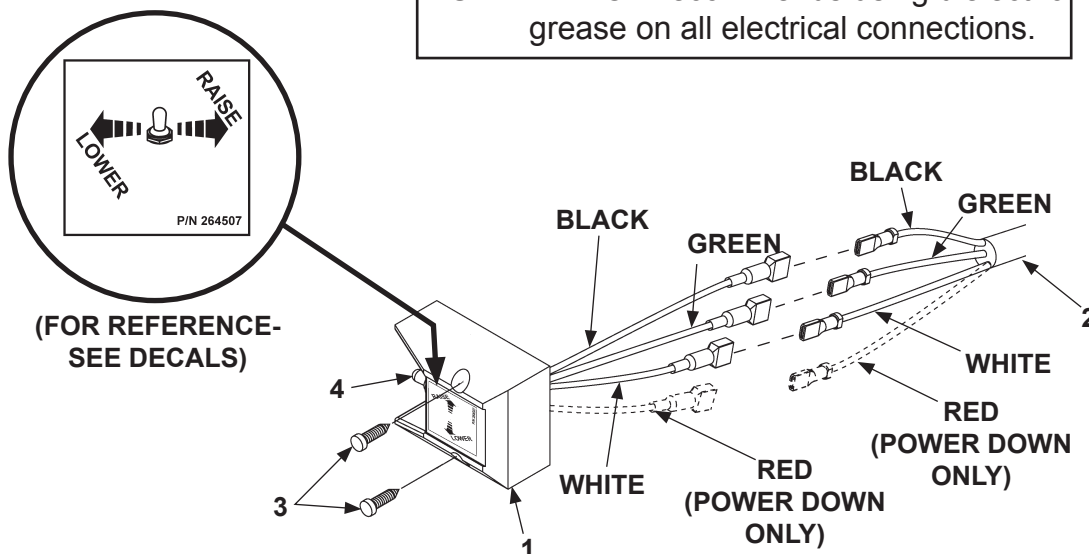
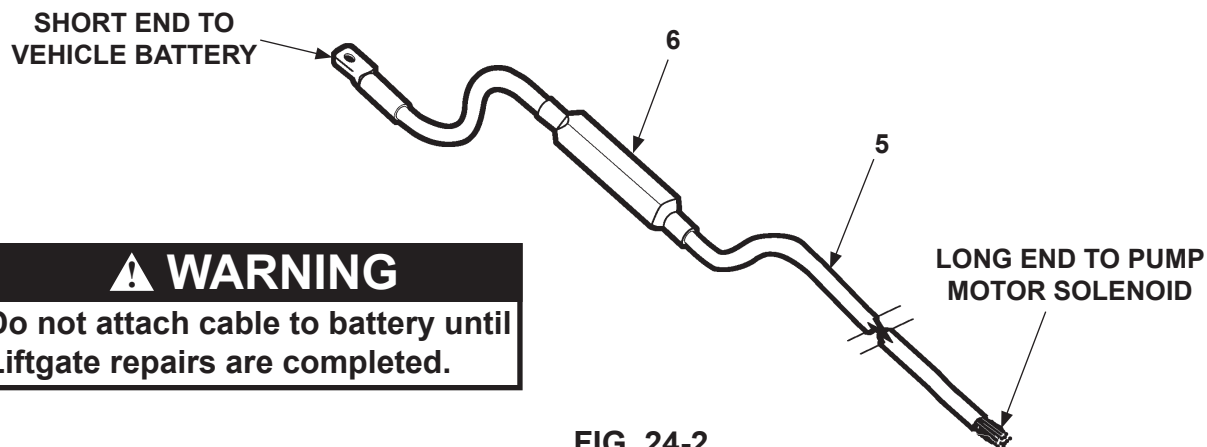


FIG. 24-1

ITEM	QTY.	PART NO.	DESCRIPTION
1	1	267959-01	MOLDED SWITCH ASSEMBLY (GRAVITY DOWN)
		264951-04	MOLDED SWITCH ASSEMBLY (POWER DOWN)
2	1	268025-01	CABLE ASSEMBLY, 85" LG. (GRAVITY DOWN)
		268170-01	CABLE ASSEMBLY, 85" LG. (POWER DOWN)
3	2	900057-5	SCREW, SELF-TAPPING #10-24 X 1" LG.
4	1	905206	SWITCH BOOT SEAL
5	1	264422	CABLE ASSEMBLY, 175 AMPS, 38' LG.
6	1	264687	KIT, MEGAFUSE (175 AMP FUSE & HEATSHRINK TUBING)

TABLE 24-1



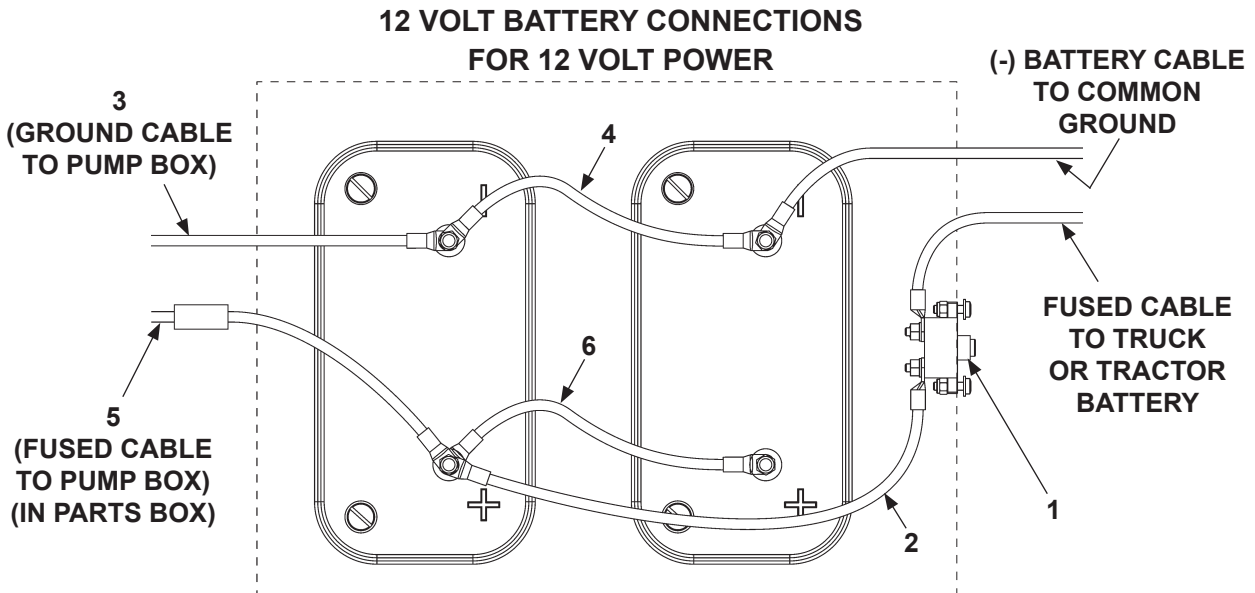
**⚠ WARNING**  
Do not attach cable to battery until  
Liftgate repairs are completed.

FIG. 24-2

# OPTIONAL BATTERY BOX ELECTRICAL COMPONENTS

LAST UPDATED  
DEC 2012 to FEB 2018

**NOTE:** MAXON recommends using dielectric grease on all electrical connections.



**FIG. 25-1**

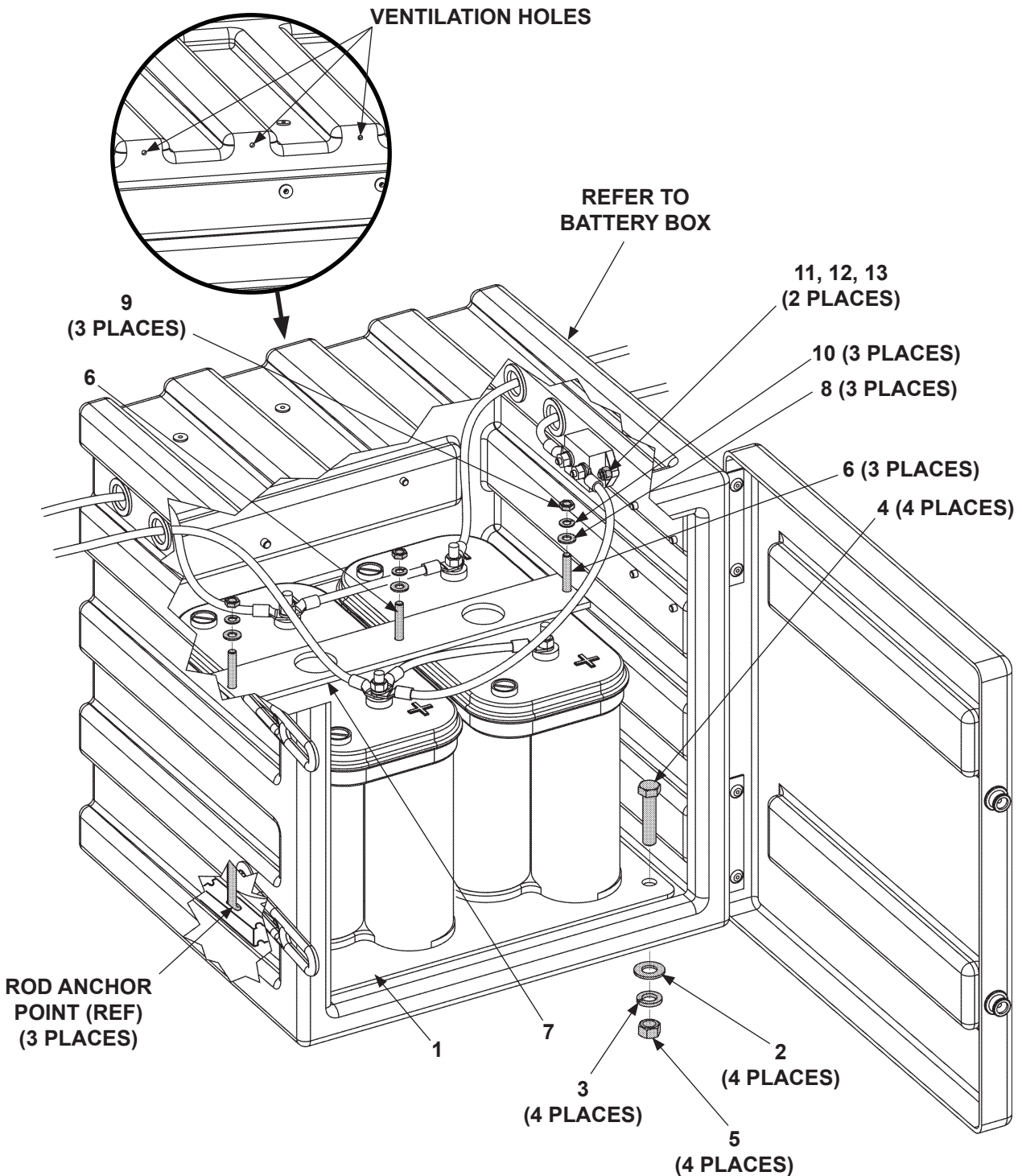
ITEM	QTY	PART NO.	DESCRIPTION
1	1	221736	CIRCUIT BREAKER 150 AMP
2	1	269308-18	CABLE ASSEMBLY, 2 GA (RED), 18" LG.
3	1	268226-06	CABLE ASSEMBLY, 2 GA, 74" LG.
4	1	251871-14	CABLE ASSEMBLY, 2 GA, 10" LG
5	1	285487-02	CABLE ASSEMBLY, 2 GA, 200 AMP, 42" LG.
6	1	269308-10	CABLE ASSEMBLY, 2 GA (RED), 10" LG.

# OPTIONAL BATTERY BOX ASSEMBLY

LAST UPDATED  
DEC 2012 to FEB 2018

## ⚠ WARNING

Explosive hydrogen gas from charging batteries can accumulate in battery box if not vented from the box. To prevent hydrogen gas from accumulating, ensure the 3 ventilation holes in battery box are not plugged or covered.



## OPTIONAL BATTERY BOX ASSEMBLY

LAST UPDATED  
DEC 2012 to FEB 2018

ITEM	QTY	PART NO.	DESCRIPTION
1	1	269535-01G	BATTERY MOUNT PLATE WELDMENT, GALVANIZED
2	4	902013-14	FLAT WASHER, 9/16"
3	4	902011-7	LOCK WASHER, 9/16"
4	4	900033-6	CAP SCREW, 1/2"-20 X 2-1/4" LG., GR8
5	4	901011-10	HEX NUT, 1/2"-20
6	3	227722-01	ROD, L-SHAPE BATTERY HOLD DOWN
7	1	250479	BRACKET (BATTERY HOLD DOWN)
8	3	902013-10	FLAT WASHER, 5/16"
9	3	901005	HEX NUT, 5/16"-18, GR8
10	3	902011-3	LOCK WASHER, #10
11	2	902013-09	FLAT WASHER, 1/4"
12	2	900002-4	PAN HEAD SCREW, 1/4"-20 X 1 LG.
13	2	901000	LOCK NUT, 1/4"-20



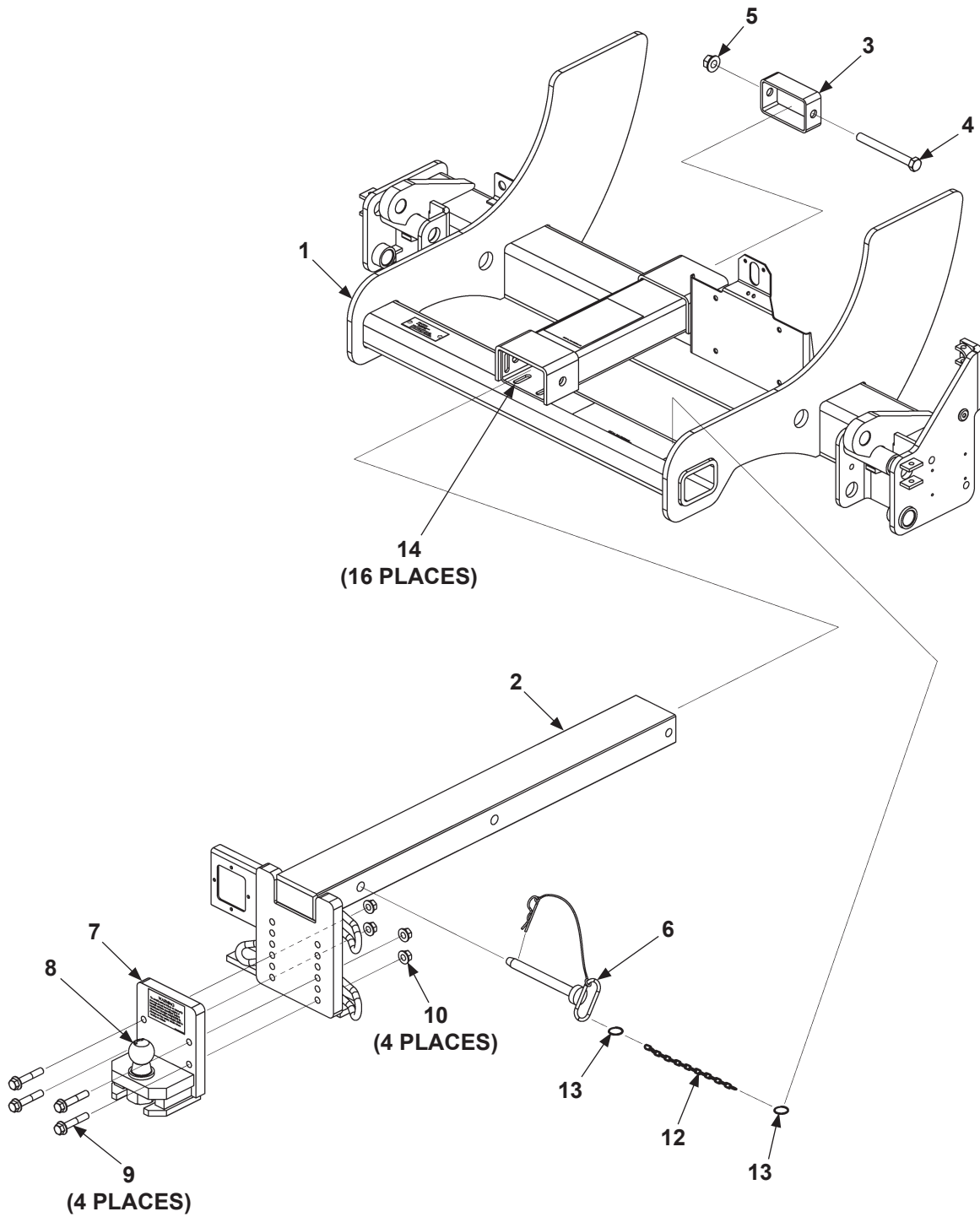
# OPTIONAL BATTERY BOX

LAST UPDATED  
DEC 2012 to FEB 2018

ITEM	QTY	PART NO.	DESCRIPTION
REF	1	269561-01	BATTERY BOX
1	1	269526-01	BOX
2	4	908022-03	PLUG, 5/16"
3	1	908022-08	PLUG, 1-1/16"
4	6	908022-07	PLUG, 1/4"
5	4	266428-02	GROMMET, 1"
6	1	269558-01	COVER
7	2	908193-01	RUBBER LATCH
8	2	908194-01	FASTENING KNOB
9	2	285884-01	BATTERY BOX HINGE STAINLESS STEEL
10	8	903715-03	BLIND RIVET, 1/4" X 1/4"-3/8"
11	10	903438-01	WASHER, 1/4"
12	2	908022-05	PLUG, 9/16"
13	2	900719-07	BUTTON HEAD SCREW, 1/4"-20 X 1" LG.
14	2	903137-01	LOCK NUT, 1/4"-20, NYLON

# TRAILER HITCH (IF EQUIPPED)

LAST UPDATED  
DEC 2012 to FEB 2018

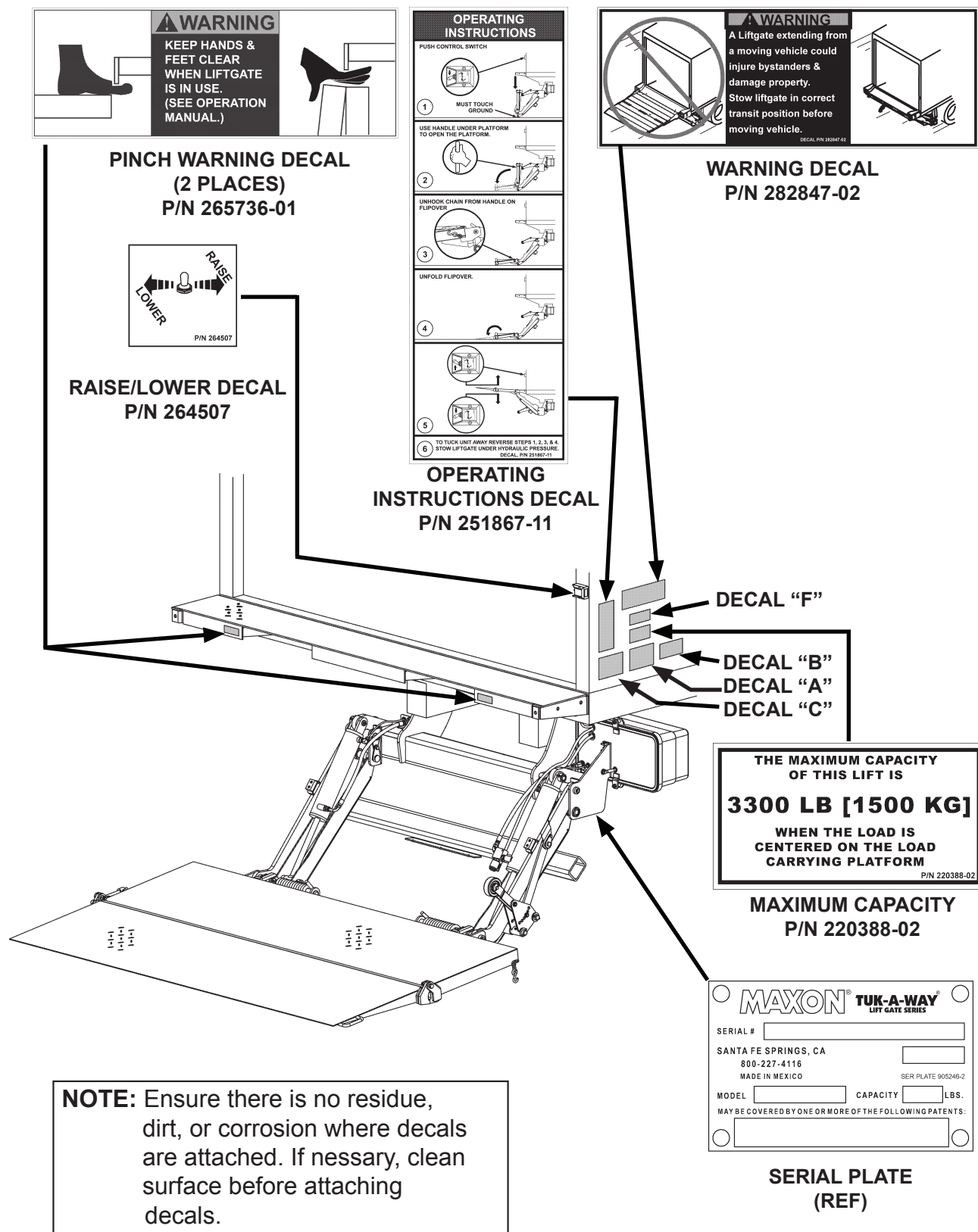


## TRAILER HITCH (IF EQUIPPED)

LAST UPDATED  
DEC 2012 to FEB 2018

ITEM	QTY	PART NO.	DESCRIPTION
REF	1	288771-01	TRAILER HITCH
1	1	284148-02-100	TRAILER HITCH FRAME WELDMENT
2	1	288769-01G	HITCH BALL SLIDER WELDMENT
3	1	288770-01G	STOPPER
4	1	900055-20	HEX HEAD SCREW, 5/8"-11 X 6" LG.
5	1	901023-04	LOCK NUT, 5/8"-11
6	1	904728-01	HITCH PIN
7	1	287906-01	HITCH BALL BRACKET
8	1	288785-01G	HITCH BALL ASSEMBLY
9	4	901024-09	FRAME BOLT, 1/2"-13 X 2-3/4" LG, GR8
10	4	901023	LOCK NUT, 1/2"-13
12	1	050408-19	CHAIN, #4 X 19 LINKS
13	2	908215-01	CHAIN HOLDER
14	16	288610-01	PLASTIC PAD





**WARNING**  
KEEP HANDS & FEET CLEAR WHEN LIFTGATE IS IN USE. (SEE OPERATION MANUAL.)

**OPERATING INSTRUCTIONS**

PUSH CONTROL SWITCH

1 MUST TOUCH GROUND

2 USE HANDS UNDER PLATFORM TO OPEN THE PLATFORM

3 UNHOOK CHAIN FROM HANDLE ON FLIPOVER

4 UNFOLD FLIPOVER

5

6 TO TUCK UNIT AWAY REVERSE STEPS 1, 2, 3, & 4 STOW LIFTGATE UNDER HYDRAULIC PRESSURE. (DECAL P/N 251867-11)

**WARNING**  
A Liftgate extending from a moving vehicle could injure bystanders & damage property. Stow liftgate in correct transit position before moving vehicle. (DECAL P/N 282847-02)

**PINCH WARNING DECAL (2 PLACES) P/N 265736-01**

**RAISE/LOWER DECAL P/N 264507**

RAISE  
LOWER

**WARNING DECAL P/N 282847-02**

**OPERATING INSTRUCTIONS DECAL P/N 251867-11**

DECAL "F"

DECAL "B"

DECAL "A"

DECAL "C"

THE MAXIMUM CAPACITY OF THIS LIFT IS

**3300 LB [1500 KG]**

WHEN THE LOAD IS CENTERED ON THE LOAD CARRYING PLATFORM

P/N 220388-02

**MAXIMUM CAPACITY P/N 220388-02**

**MAXON TUK-A-WAY LIFT GATE SERIES**

SERIAL # \_\_\_\_\_

SANTA FE SPRINGS, CA \_\_\_\_\_

800-227-4116 \_\_\_\_\_

MADE IN MEXICO \_\_\_\_\_ SER. PLATE 905246-2

MODEL \_\_\_\_\_ CAPACITY \_\_\_\_\_ LBS.

MAY BE COVERED BY ONE OR MORE OF THE FOLLOWING PATENTS:

\_\_\_\_\_

**NOTE:** Ensure there is no residue, dirt, or corrosion where decals are attached. If nessary, clean surface before attaching decals.

FIG. 32-1

**SAFETY INSTRUCTIONS**

Read all decals and operation manual before operating liftgate.

1. Do not use liftgate unless you have been properly instructed and have read, and are familiar with, the operating instructions.
2. Be certain vehicle is properly and securely braked before using the liftgate.
3. Always inspect this liftgate for maintenance or damage before using it. Do not use liftgate if it shows any sign of damage or improper maintenance.
4. Do not overload
5. Make certain the area in which the platform will open and close is clear before opening or closing the platform.
6. Make certain platform area, including the area in which loads may fall from platform, is clear before and at all times during operation of liftgate.
7. This liftgate is intended for loading and unloading of cargo only. Do not use this liftgate for anything but its intended use.

(A)



**WARNING**

Liftgate hazards can result in crushing or falling.

Keep hands and feet clear of pinch points.

If riding liftgate, make sure load is stable and footing is solid.

P/N 282522-01 (B)

Read and understand all instructions and WARNINGS before use.

**WARNING**

Read this information carefully.

- Improper operation of this Liftgate can result in serious personal injury. If you do not have a copy of the operating instructions, please obtain them from your employer, distributor, or lessor before you attempt to operate Liftgate.
- If there are signs of improper maintenance, damage to vital parts, or slippery platform surface, do not use the Liftgate until these problems have been corrected.
- If you are using a pallet jack, be sure it can be maneuvered safely.
- Do not operate a forklift on the platform.
- Do not allow any part of yours or your helper's body to be placed under, within, or around any portion of the moving Liftgate, or its mechanisms, or in a position that would trap them between the platform and the ground or truck when the Liftgate is operated.
- If a helper is riding the platform with you, make sure you are both doing so safely and that you are not in danger of coming in contact with any moving or potentially moving obstacles.
- **USE GOOD COMMON SENSE.**
- If load appears to be unsafe, do not lift or lower it.

For a free copy of other manuals that pertain to this model Liftgate, please visit our website at [www.maxonlift.com](http://www.maxonlift.com) or call Customer Service at (800) 227-4116.

(C)

**CAUTION**

Always stand clear of platform area.

P/N 282522-01 (F)

DECAL SHEET  
P/N 282522-01

FIG. 33-1

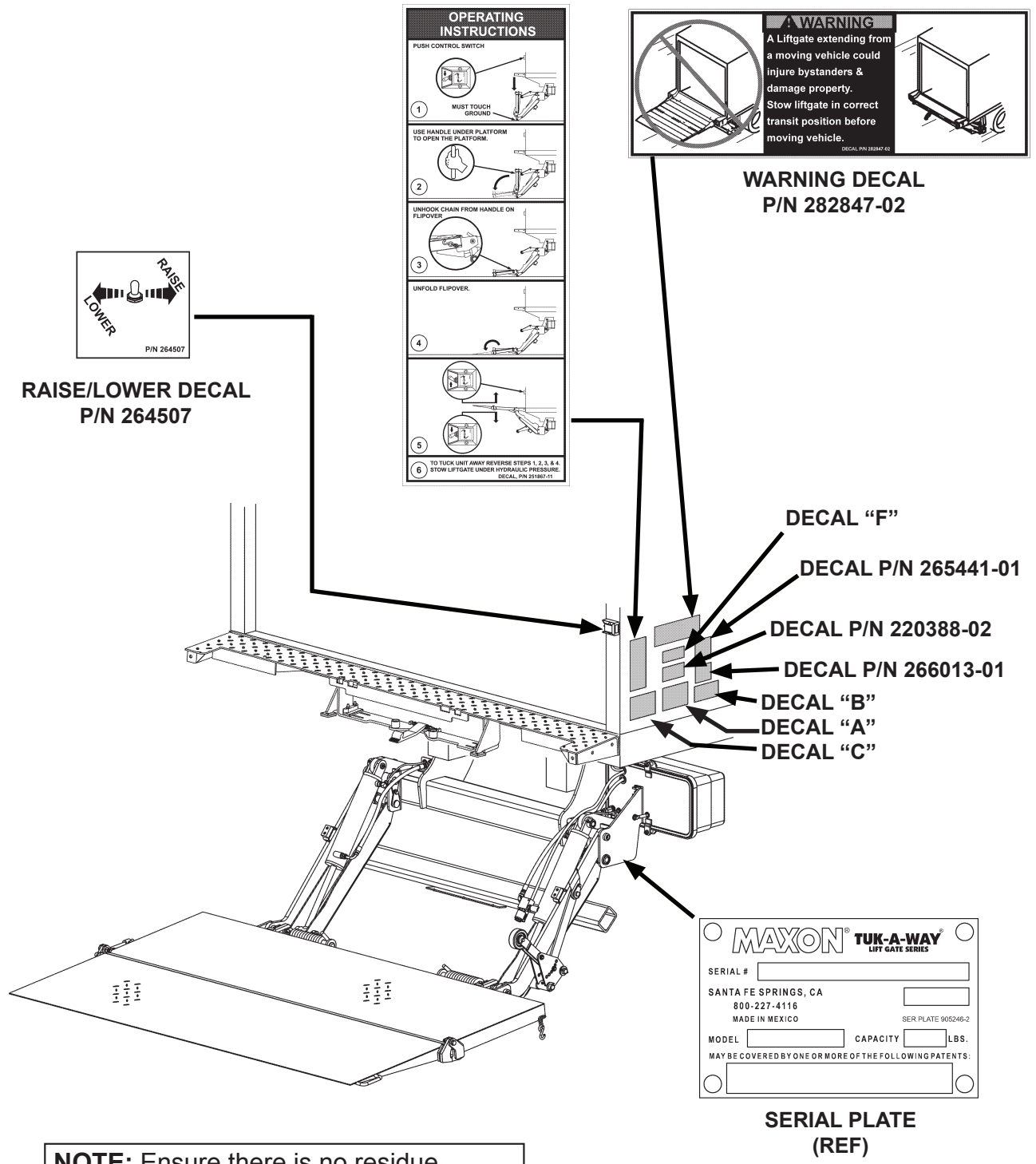
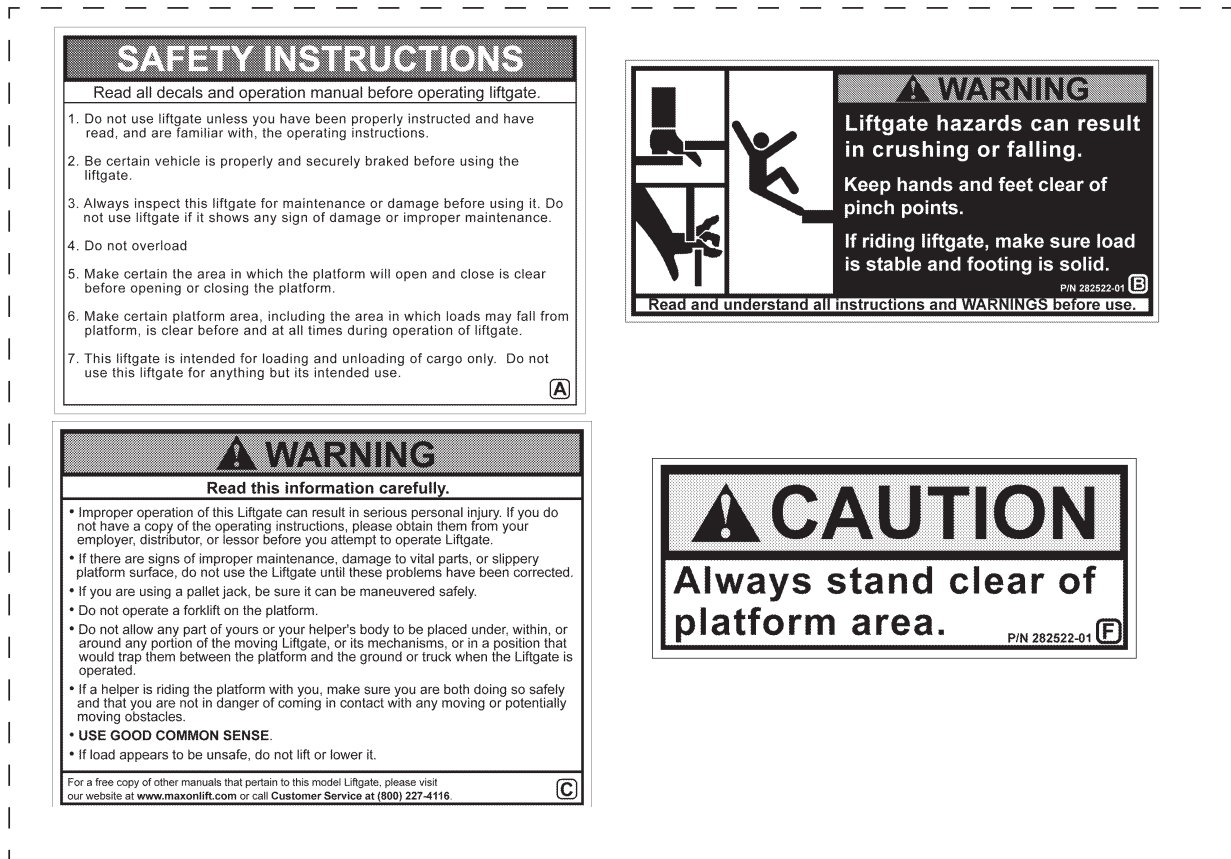


FIG. 34-1



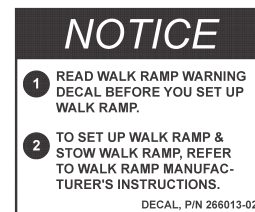
DECAL SHEET  
P/N 282522-01



MAXIMUM CAPACITY  
P/N 220388-02



WARNING DECAL  
P/N 265441-01



NOTICE DECAL  
P/N 266013-01

FIG. 35-1

# DECALS: TRAILER HITCH (IF EQUIPPED)

LAST UPDATED  
DEC 2012 to FEB 2018

**WARNING**

To avoid serious injury or property damage, do not exceed weights of towed vehicle specified below.  
 Maximum tongue weight: 600 lb.  
 Gross towed vehicle weight: 6000 lb.  
 Always use the safety chains when towing a vehicle.

DECAL P/N 285859-01

**WARNING DECAL  
P/N 285859-01**

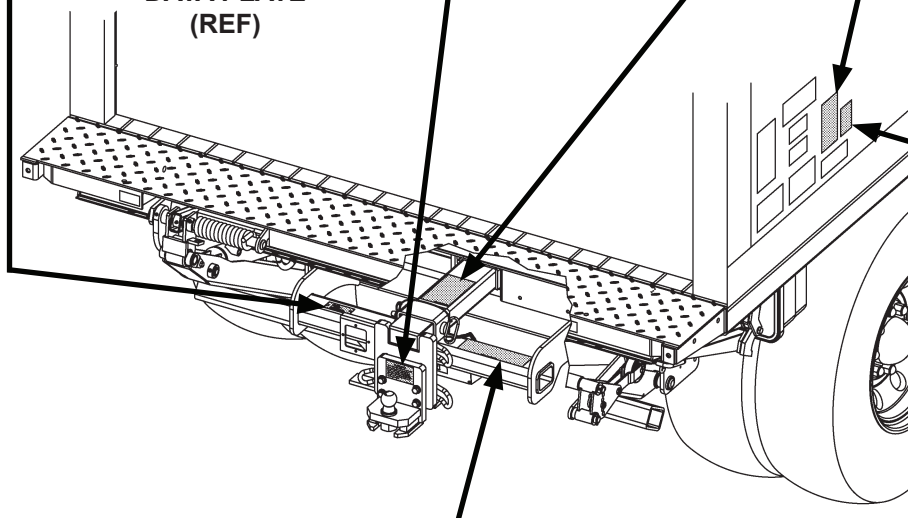
**MAXON** SANTA FE SPRINGS, CA  
800-227-4116

Class-4 Trailer Hitch  
 P/N: 288771-00-100

Maximum tongue weight: 600 lb.  
 Gross towed vehicle weight: 6000 lb.

DATA PLATE P/N 285848-01

**DATA PLATE  
(REF)**



**OPERATING INSTRUCTIONS**

Ensure hitch pin and locking clip are correctly inserted when hitch is stowed or in towing position. Moving the tow vehicle without securing hitch could result in serious injury or property damage.

STOWED POSITION

TOWING POSITION

DECAL P/N 285834-01

**OPERATING INSTRUCTIONS DECAL  
P/N 285834-01**

**CAUTION**

NEVER OPERATE LIFTGATE WHEN TRAILER HITCH IS EXTENDED. PLATFORM & HITCH WILL BE DAMAGED. ALWAYS STOW TRAILER HITCH BEFORE OPERATING LIFTGATE.

DECAL, P/N 285852-01

**CAUTION DECAL  
285852-01**

STOWED POSITION

**WARNING**

Ensure hitch pin & locking clip are correctly inserted when hitch is stowed or in tow position. Moving the tow vehicle without securing hitch could result in serious injury or property damage.

DECAL P/N 285835-01

TOW POSITION

**WARNING DECAL  
P/N 285835-01**

**NOTE:** Ensure there is no residue, dirt, or corrosion where decals are attached. If necessary, clean surface before attaching decals.

**FIG. 36-1**