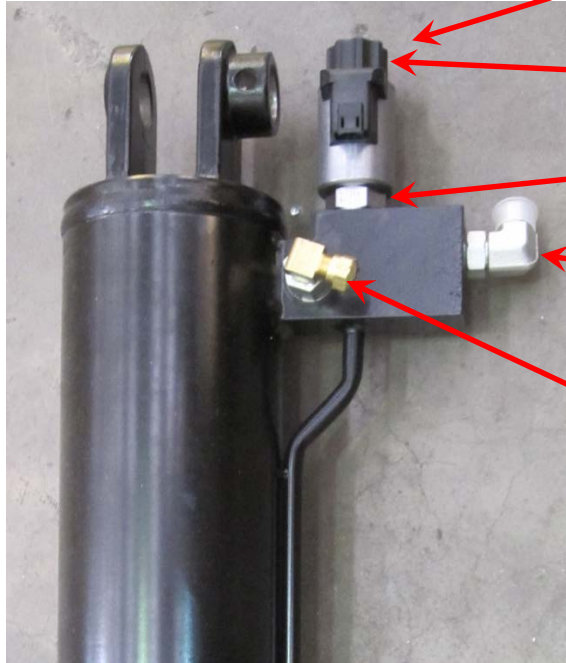


## RA Cylinder - Valves and Fittings Installation

Move Lock Valve, Flow Control and Fittings from old cylinder to new cylinder.

Install and tighten fittings at the same orientation as the original cylinder.



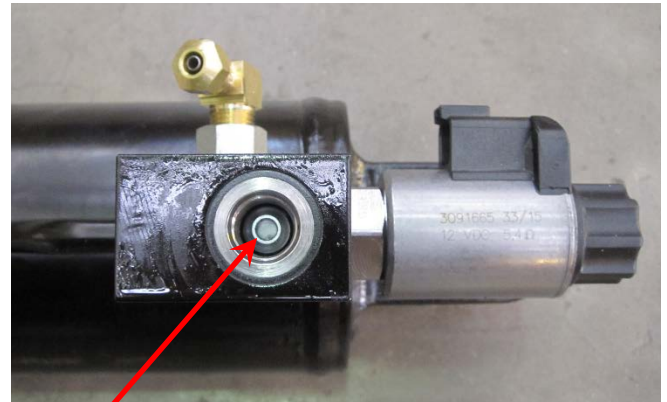
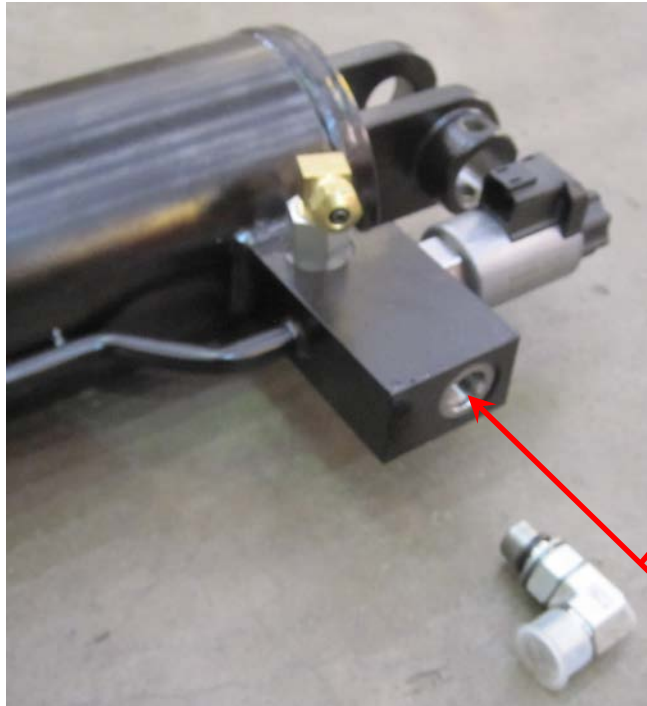
Move lock valve to new cylinder.

Tighten coil cap to 4 lb.- ft.

Tighten 7/8 hex to 33 lb.- ft.

Move fitting and flow control inside valve block to new cylinder. (See details below)

Move return line fitting to new cylinder.



Use 3/16" hex key to move flow control to new cylinder.

Fully seat flow control in new cylinder. Tighten to 5 lb.- ft.