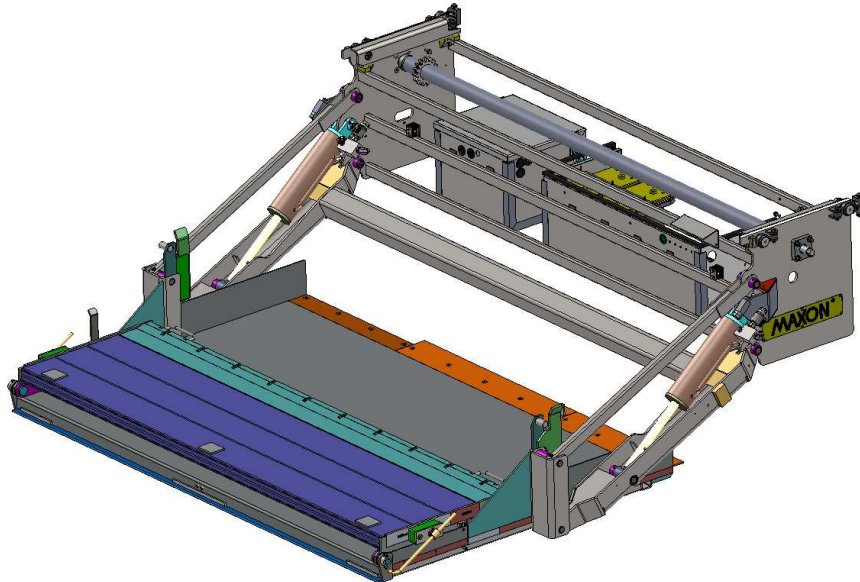
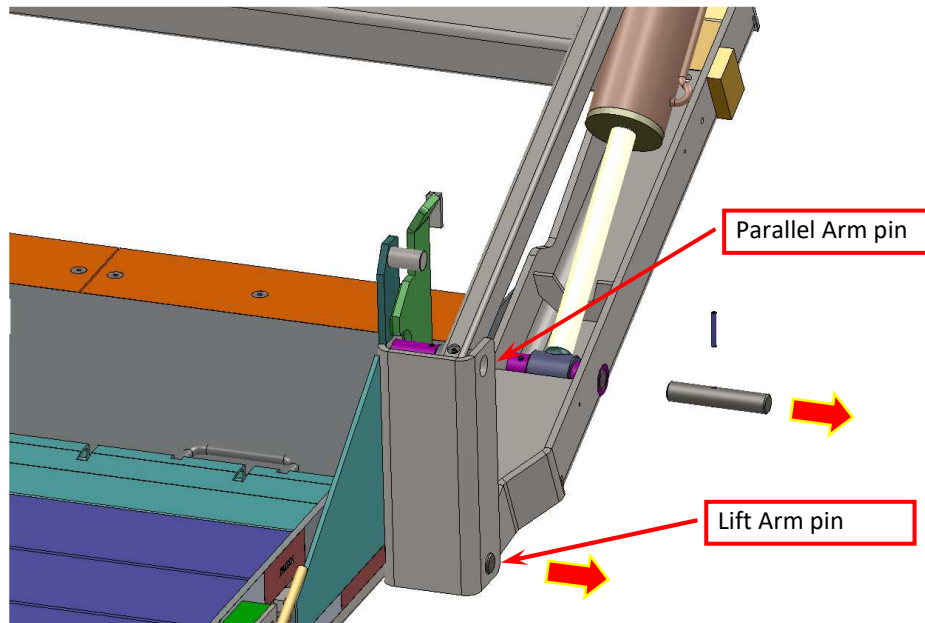


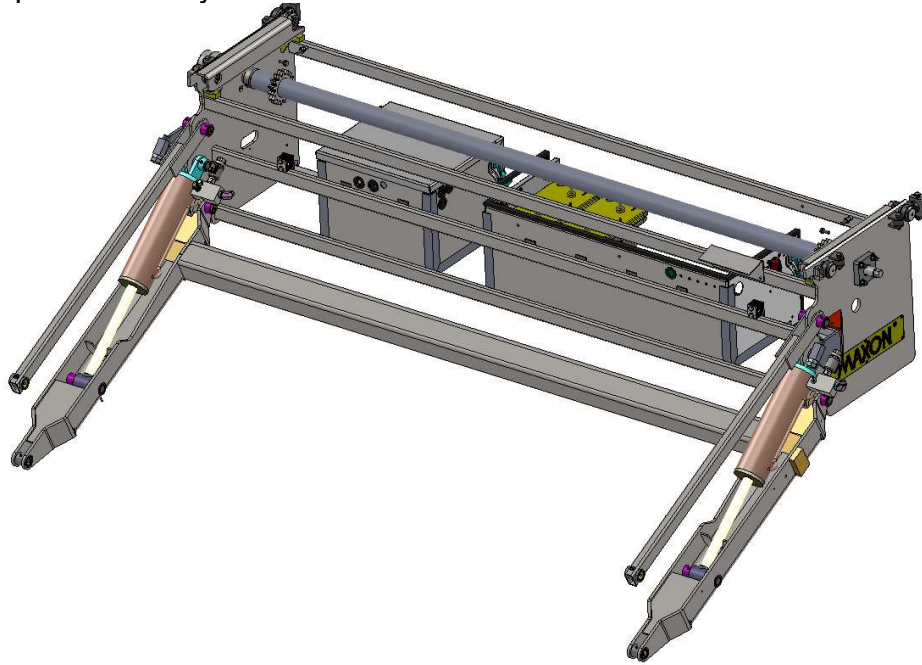
1. Slide out platform and lower platform onto forklift fork approximately 24" from the ground.



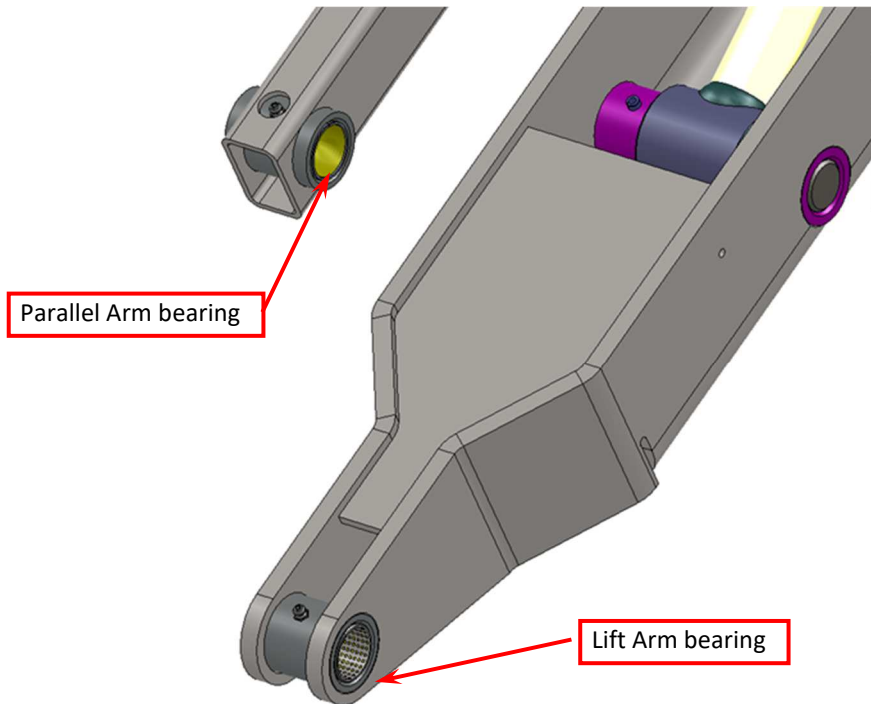
2. Remove Parallel Arm pin and Lift Arm pin from platform on left hand and right hand side of platform. Remove roll pin.



3. Slide platform away from Main Frame.

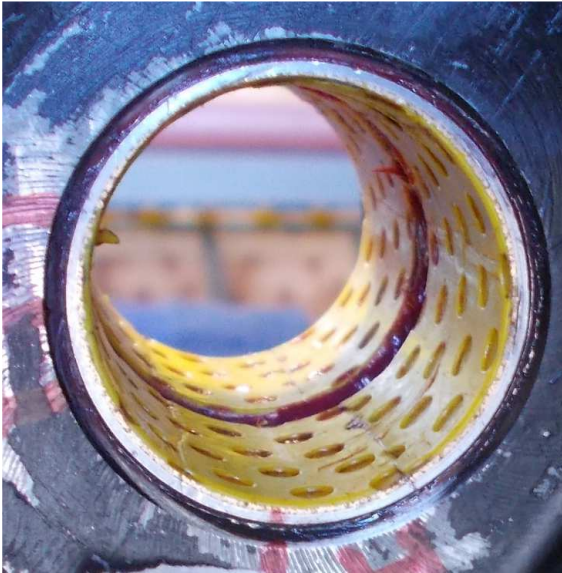


4. Clean inside of bearings on Lift Arm and Parallel Arm.

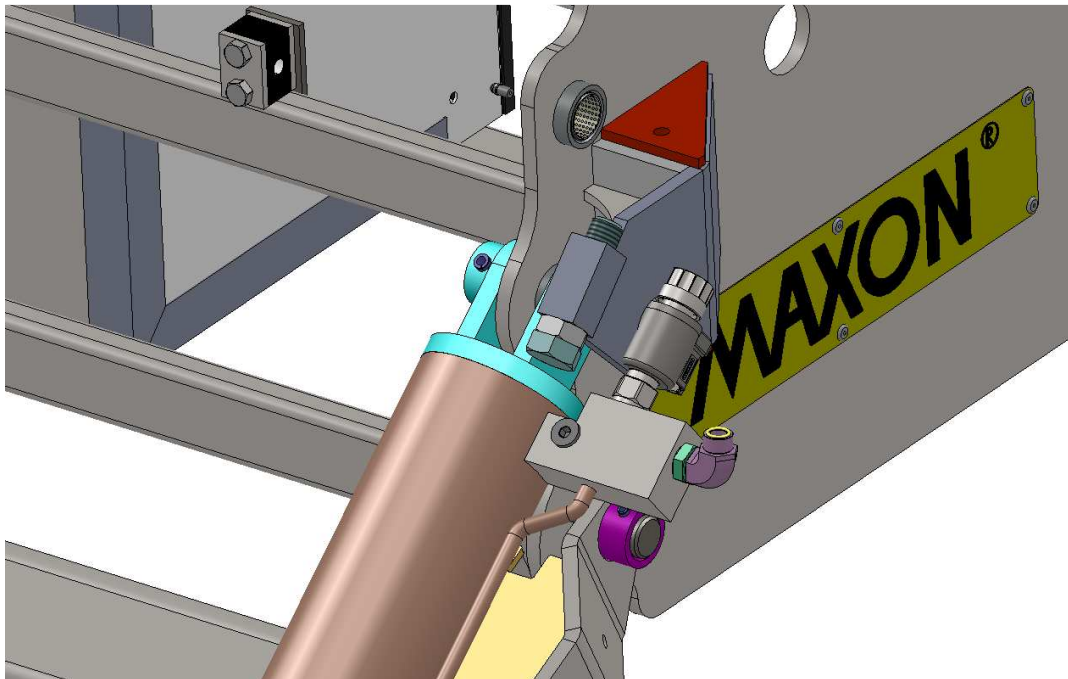


5. Inspect all bearing ID's for damage to the yellow liner. If bearing liner is damaged replace bearing. If bearing liner is in good condition use calipers to check that bearing ID is less than 1.014". Replace bearings with ID greater than 1.014". When a damaged or oversize bearing is found replace all bearings in that component. See bearing installation procedure on pages 5 and 6.

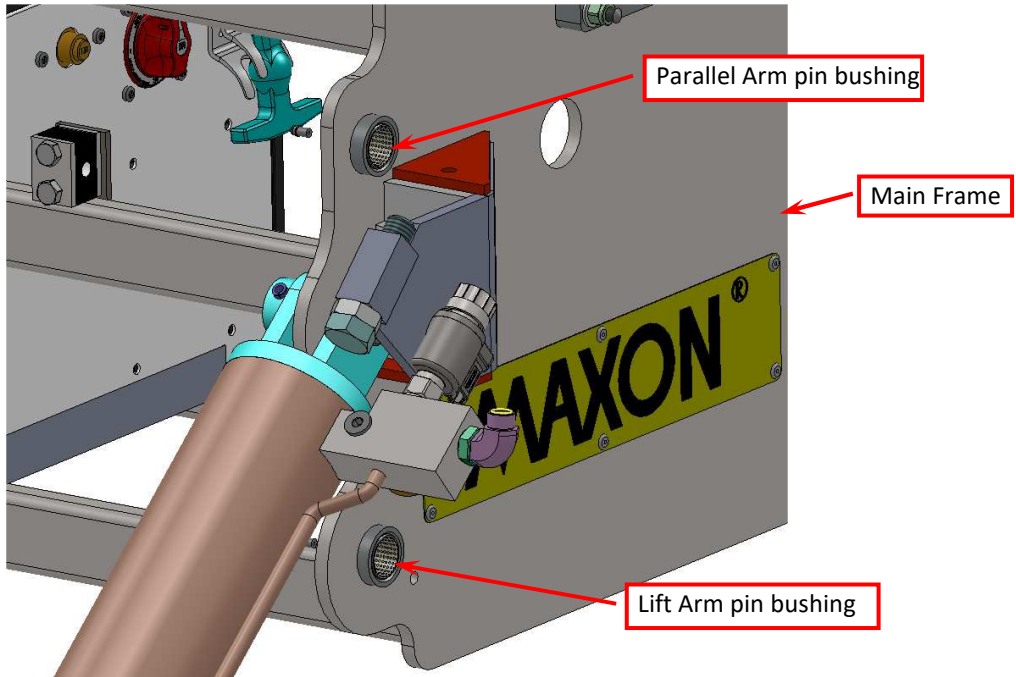
Example of good bearing liner



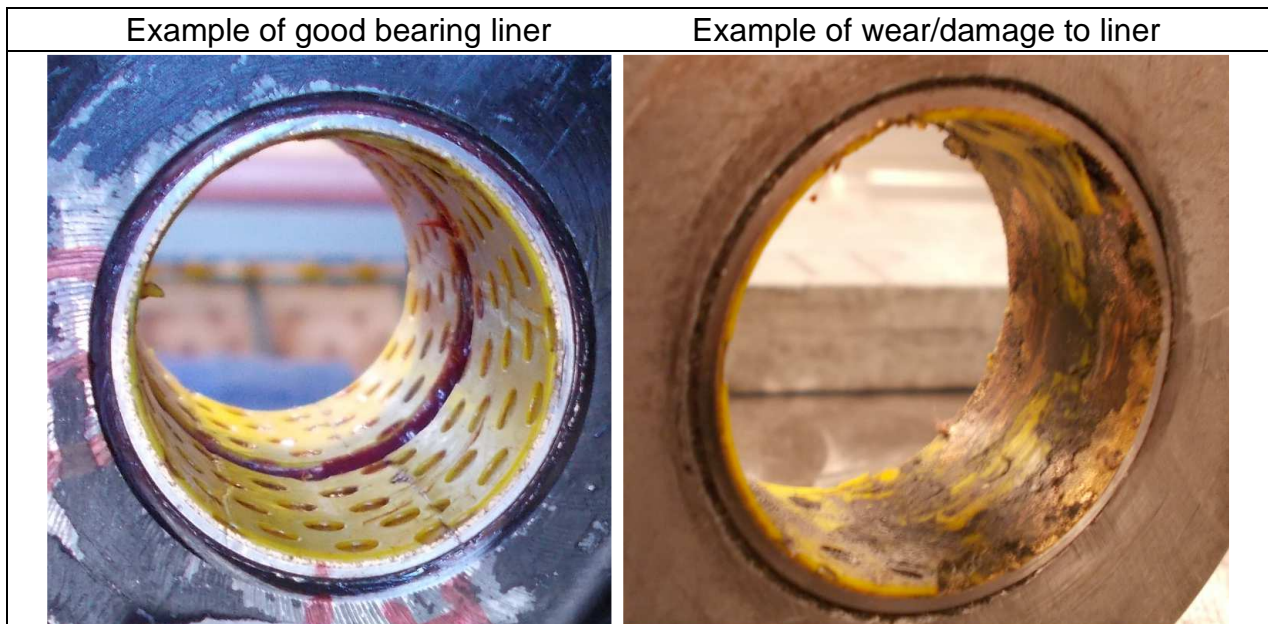
Example of wear/damage to liner



6. Remove Parallel Arm and Lift Arm from Main Frame and clean inside of bearings in Main Frame.



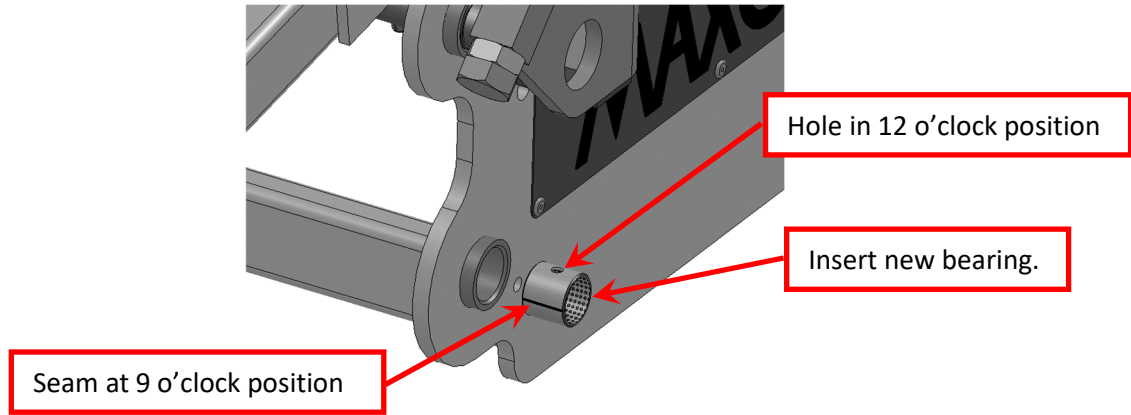
7. Inspect all bearing ID's for damage to the yellow liner. If bearing liner is damaged replace bearing. If bearing liner is in good condition use calipers to check that bearing ID is less than 1.014". Replace bearings with ID greater than 1.014". When a damaged or oversize bearing is found replace all bearings in that component. See bearing installation procedure on pages 5.



## Mainframe Bearing Replacement:

Bearing part # 908178-02

Position Bearing so the hole in the Bearing is pointing upward, 12 o'clock position, and seam in bearing is at 9 o'clock as shown below. Insert Bearing into Flanged Bushing until it is centered in the Bushing.

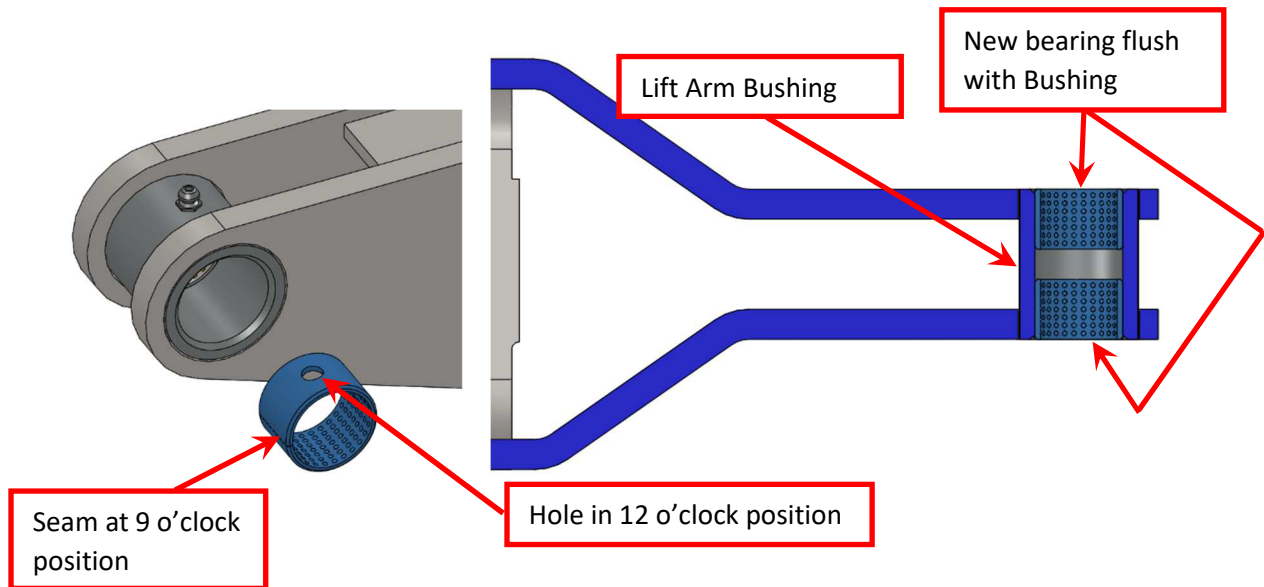


## Lift Arm Bearing Replacement:

Bearing part # 908178-01

The Lift Arm uses two bearings each pressed in to be flush with the outside of the bushing.

Position Bearing so the hole in the Bearing is pointing upward, 12 o'clock position, and seam in bearing is at 9 o'clock as shown below. Insert Bearing into Flanged Bushing until it is centered in the Bushing.



## Parallel Arm Bearing Replacement:

Bearing part # 908178-01

The Parallel Arm uses two bearings, part # 908178-01, each pressed in to be flush with the outside of the bushing.

Position Bearing so the hole in the Bearing is pointing upward, 12 o'clock position, and seam in bearing is at 3 o'clock as shown below. Insert Bearing into Flanged Bushing until it is centered in the Bushing.

