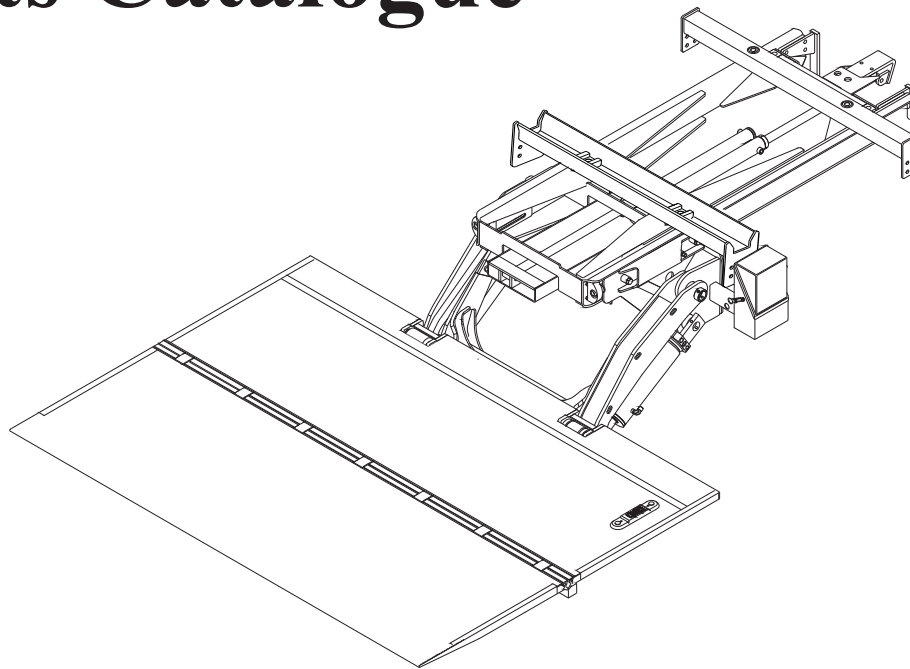


MAXON®

Spare Parts Catalogue



MAXON®
Lift CORP.

11921 Slauson Avenue.
Santa Fe Springs, CA 90670
(800) 227 - 4116

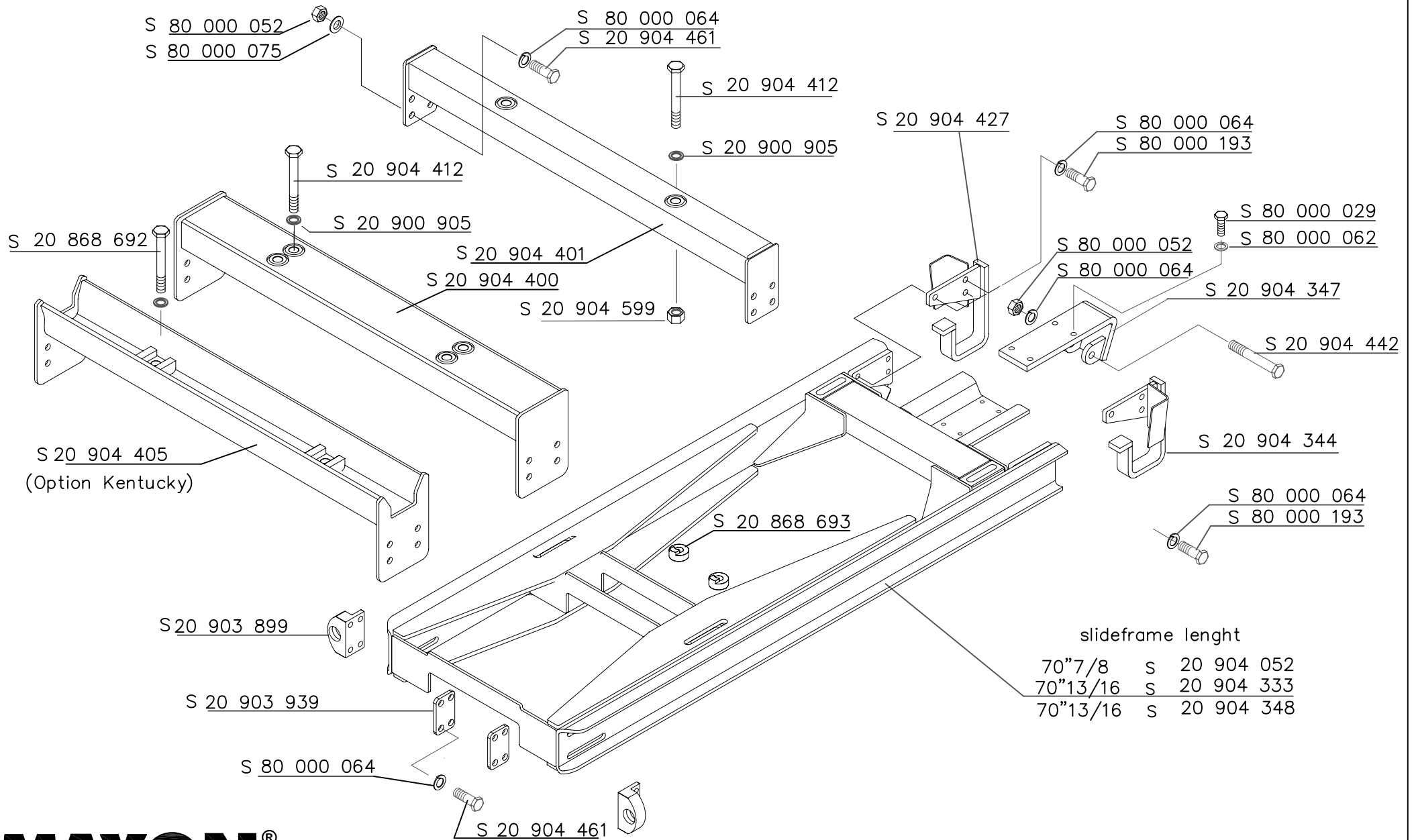
Slidelift

Series

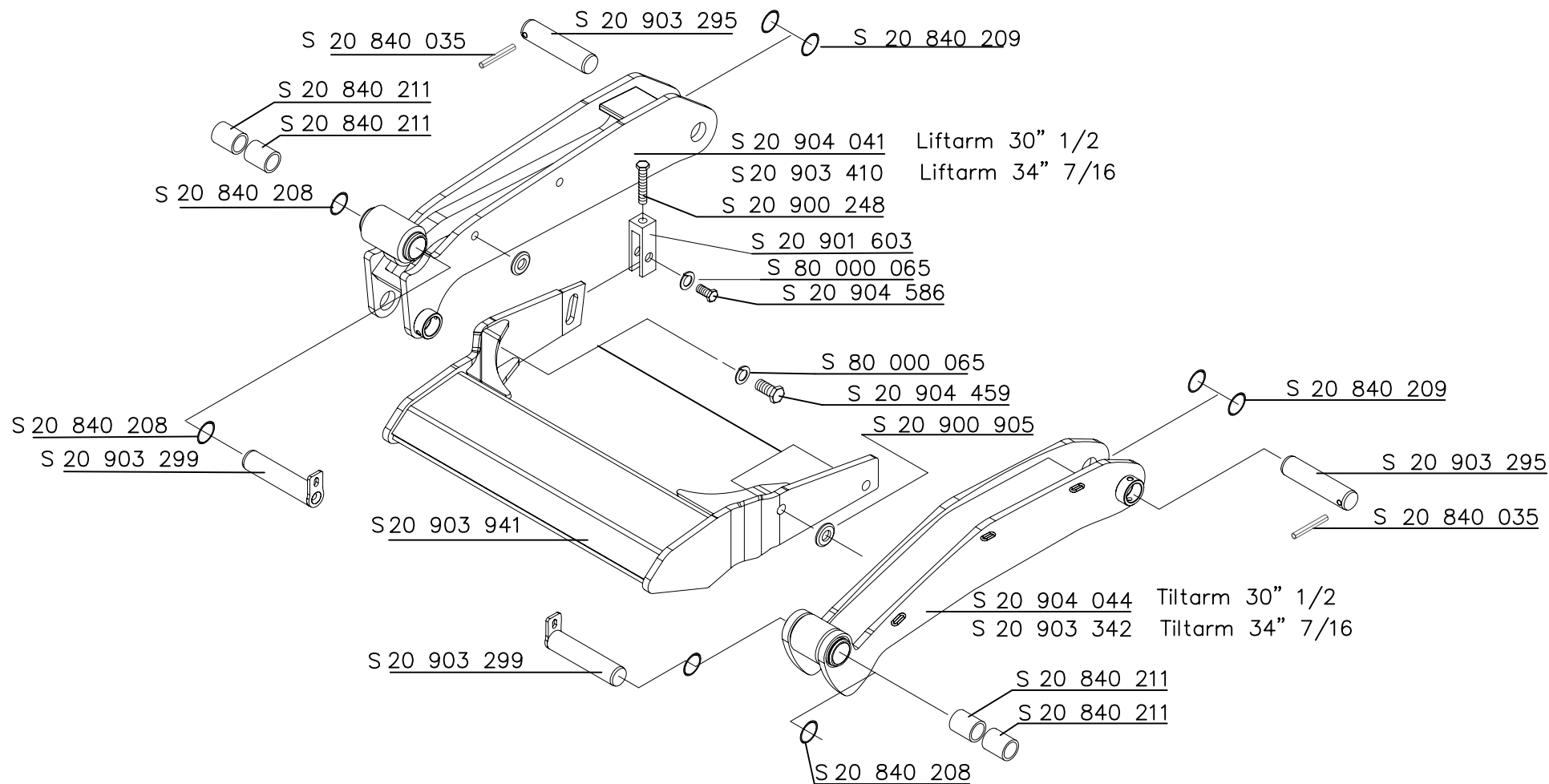
GPS 55 X1

X1 *THAT'S IT!*
TECHNOLOGY

Document no. S 20 904 495
© Sörensen Hydraulik GmbH
Print date 04.2013

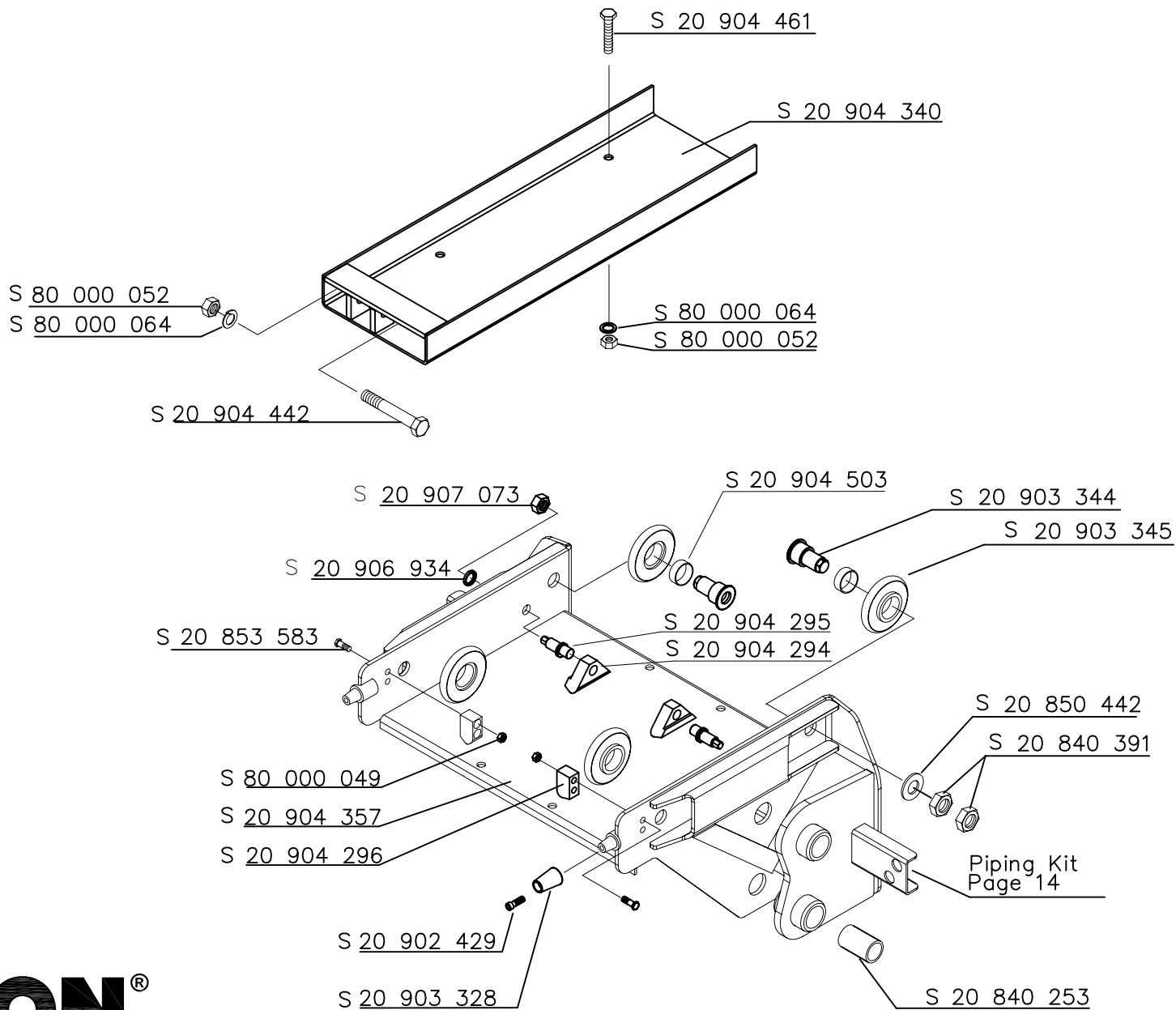


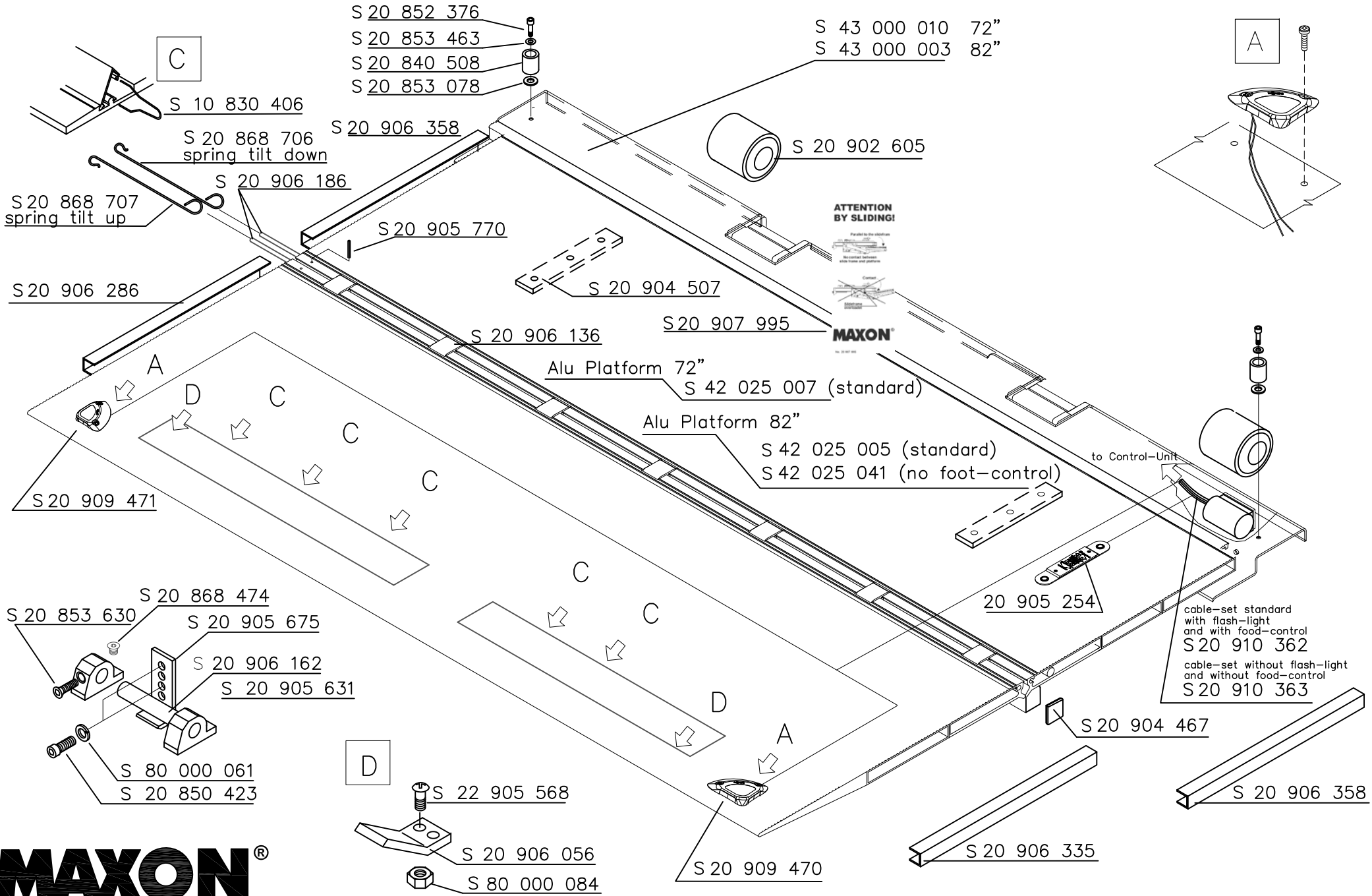
Lifting mechanism



MAXON[®]

GPS 55 X1





MAXON[®]
 GPS 55 X1

GPS platform cable-set Series 10

LED-warning-flashing-light
red
S 20 909 471

cable-set standard
with flash-light
and with food-control
S 20 910 362

cable-set without flash-light
and without food-control
S 20 910 363

to Control-Unit

sensor S2 switch

flextube

blue
brown

blue
brown

Foot-control
S 20 905 254

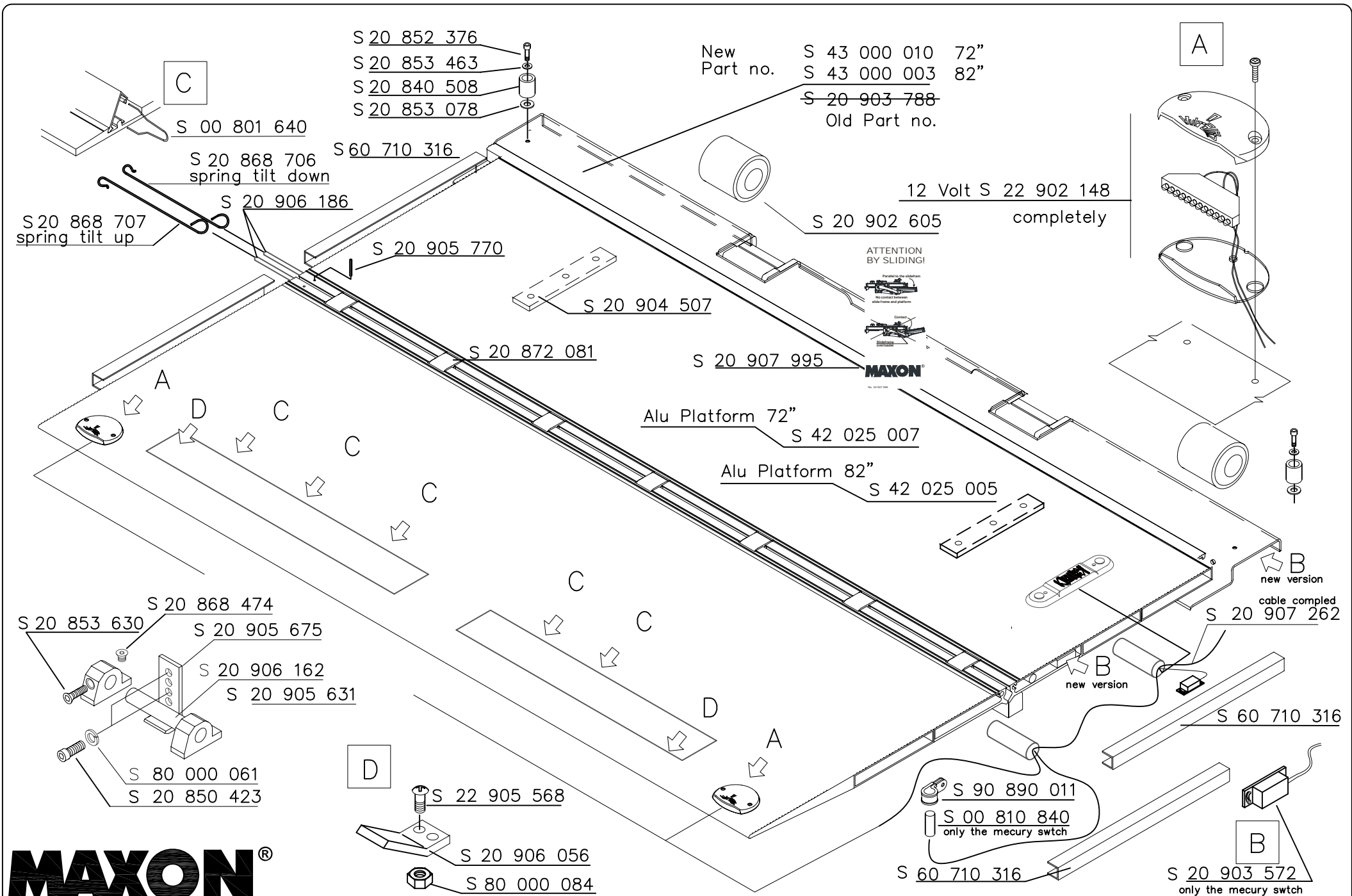
Foot-control and LED-warning-flashing-light
is not included in the cable-set
S 20 910 362 and S 20 910 363

LED-warning-flashing-light
blue
S 20 909 470

MAXON®

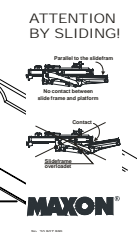
GPS 55 X1

Sachnummer 20 904 495
Series 10
Version 04.04.2013



- S 20 852 376
- S 20 853 463
- S 20 840 508
- S 20 853 078

| | | |
|--------------|-------------------------|-----|
| New Part no. | S 43 000 010 | 72" |
| | S 43 000 003 | 82" |
| Old Part no. | S 20 903 788 | |



- S 00 801 640
- S 20 868 706
spring tilt down
- S 20 868 707
spring tilt up
- S 20 906 186

- S 60 710 316
- S 20 905 770
- S 20 904 507
- S 20 872 081

12 Volt S 22 902 148
S 20 902 605 completely

Alu Platform 72"
S 42 025 007

Alu Platform 82"
S 42 025 005

- S 20 853 630
- S 20 868 474
- S 20 905 675
- S 20 906 162
- S 20 905 631
- S 80 000 061
- S 20 850 423

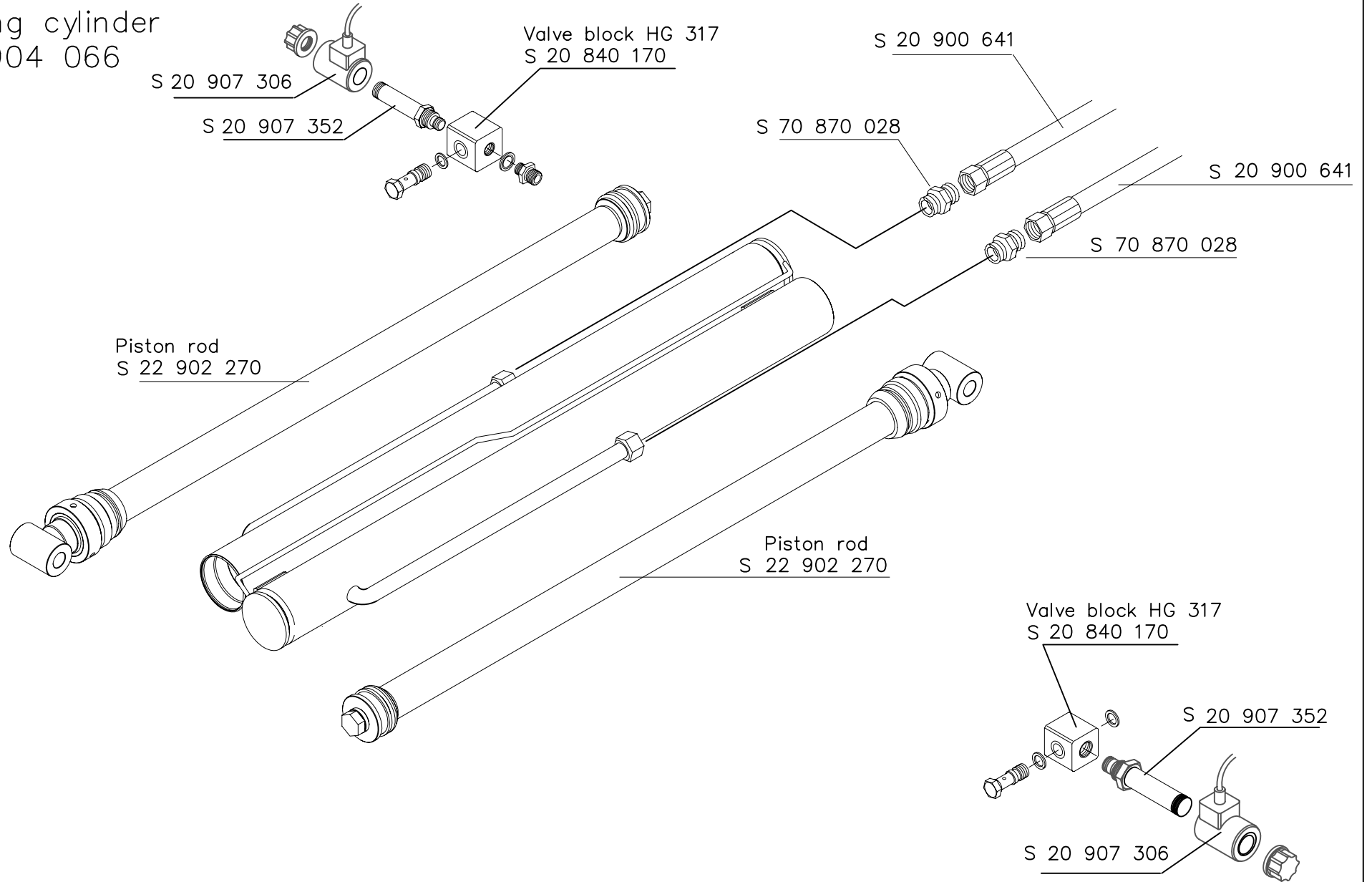
- S 22 905 568
- S 20 906 056
- S 80 000 084

- S 90 890 011
- S 00 810 840
only the mecury switch

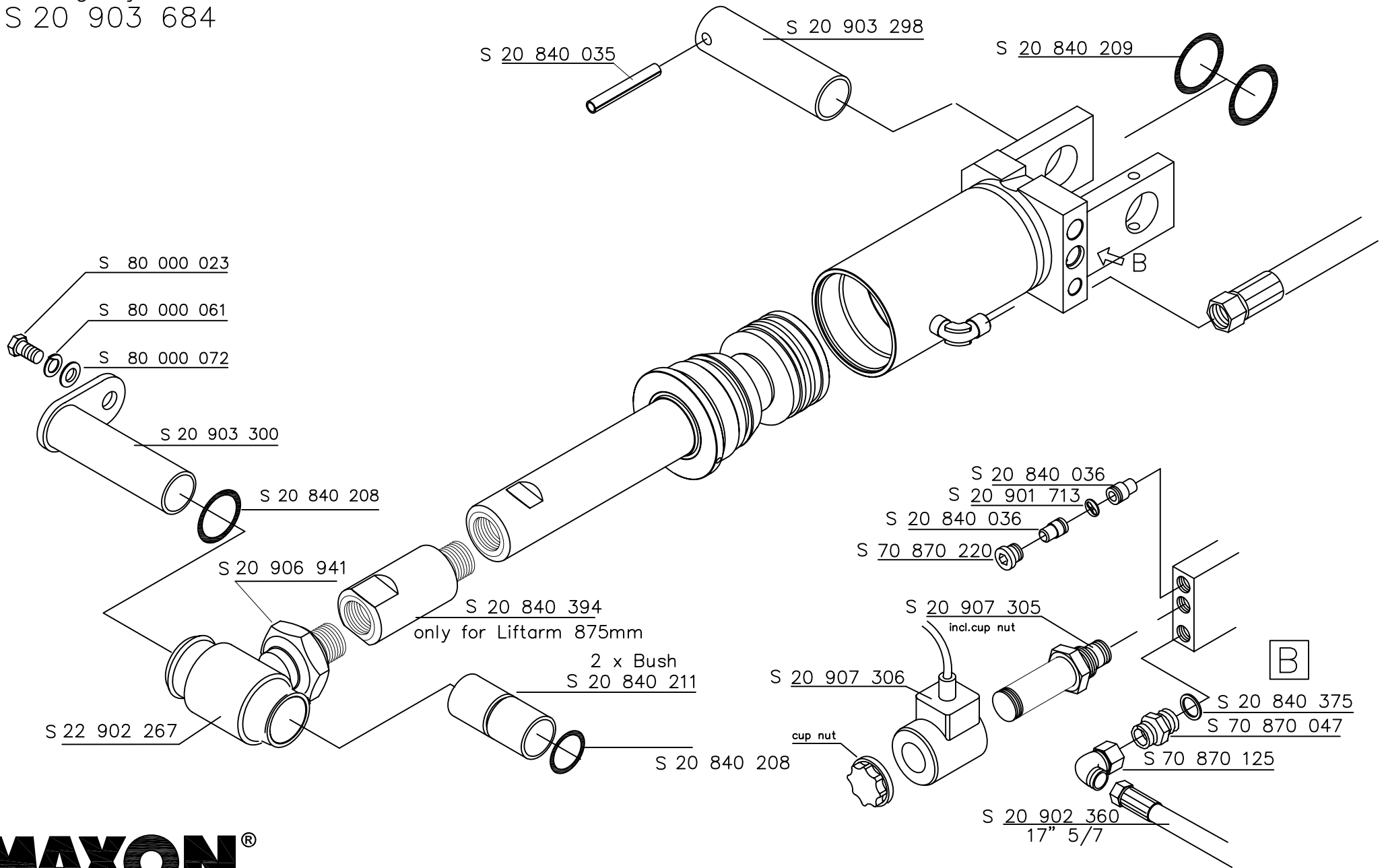
- S 20 903 572
only the mecury switch

MAXON[®]
GPS 55 X1

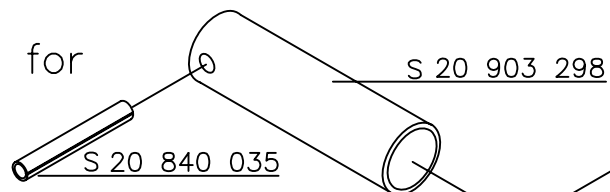
Sliding cylinder
20 904 066



Tilting cylinder
S 20 903 684

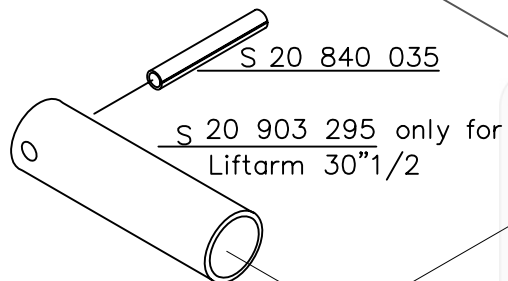


Lift cylinder
 S 20 903 037 replaced for
 20 905 489



- S 80 000 023
- S 80 000 061
- S 80 000 072

S 20 905 737 only for
 Liftarm 34"7/16



S 20 900 641

S 20 840 209

A



A

S 20 841 001
 Pressure Switch

S 20 840 361

S 20 840 036

S 70 870 220

S 20 840 039

12 Volt- S 20 901 707

S 22 902 176

Seal kit

S 20 900 641
 29" 1/2

S 20 840 375
 S 70 870 047

S 70 870 125

S 20 840 208

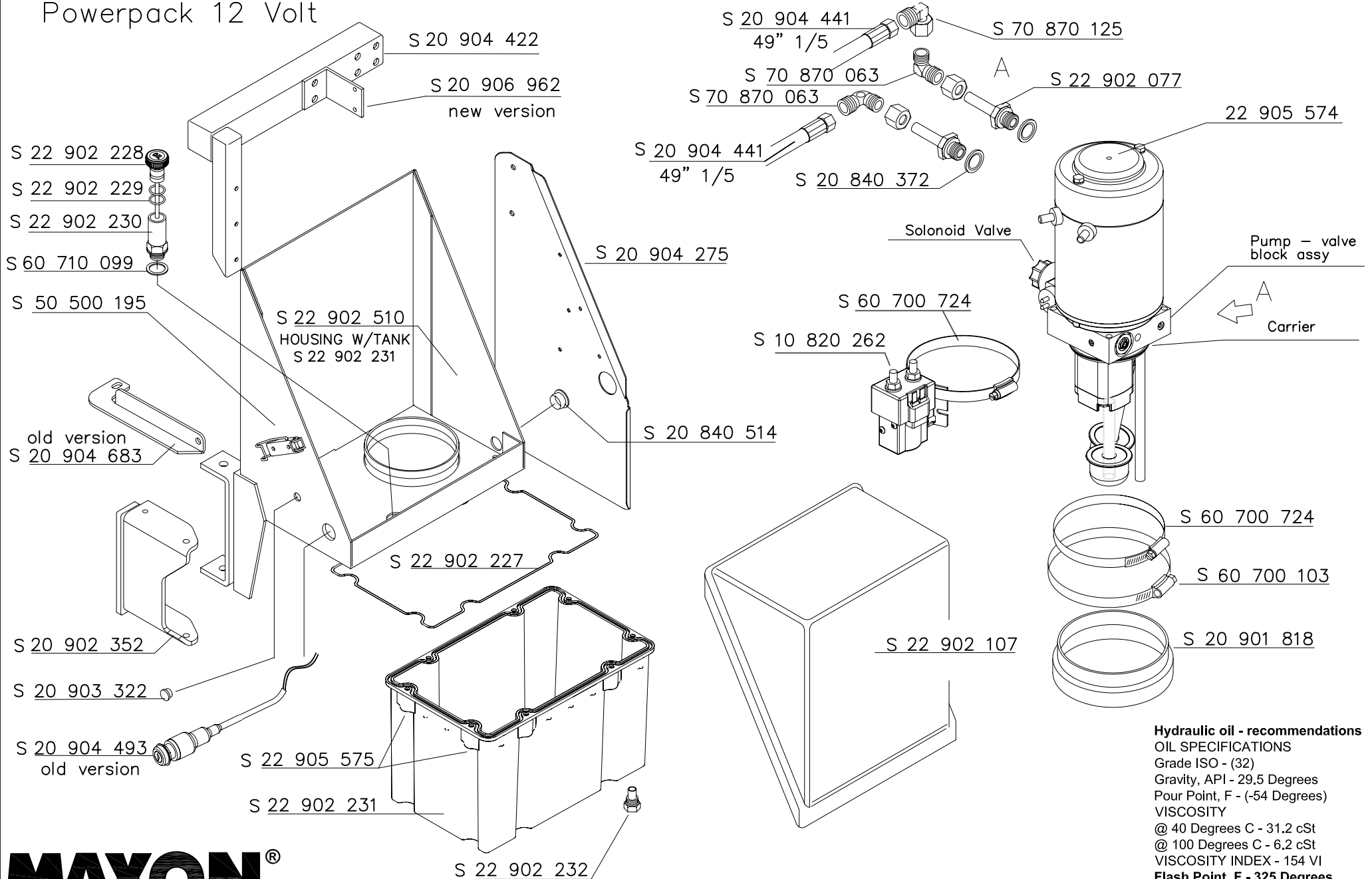
Bush
 S 20 840 253

S 20 840 208

MAXON®

GPS 55 X1

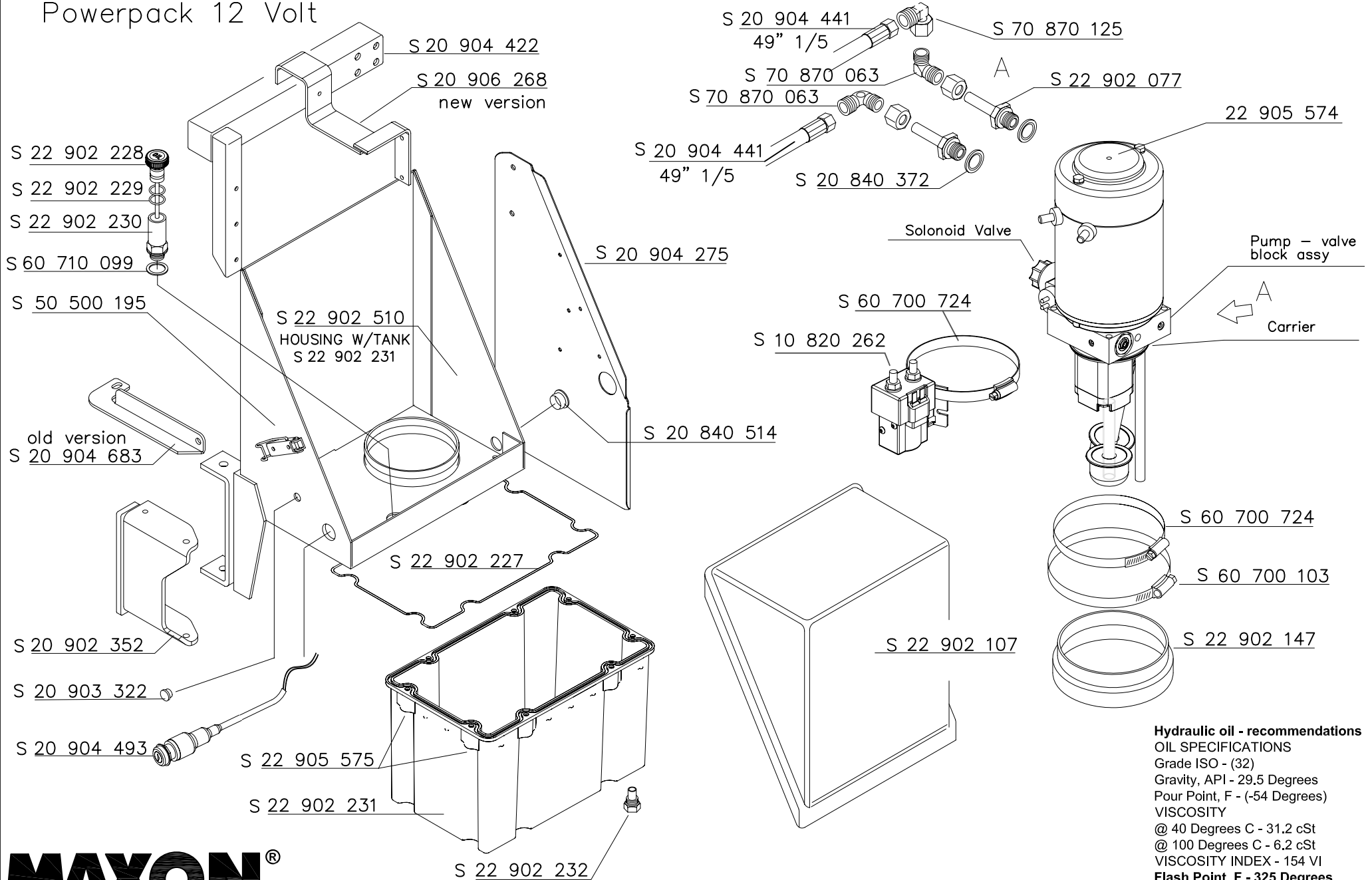
Powerpack 12 Volt



MAXON[®]
GPS 55 X1

Hydraulic oil - recommendations
 OIL SPECIFICATIONS
 Grade ISO - (32)
 Gravity, API - 29,5 Degrees
 Pour Point, F - (-54 Degrees)
 VISCOSITY
 @ 40 Degrees C - 31.2 cSt
 @ 100 Degrees C - 6.2 cSt
 VISCOSITY INDEX - 154 VI
 Flash Point, F - 325 Degrees

Powerpack 12 Volt

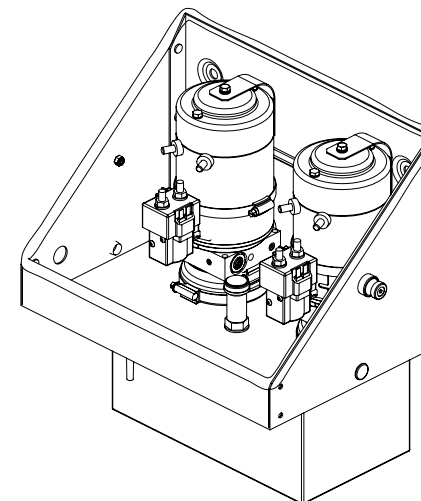
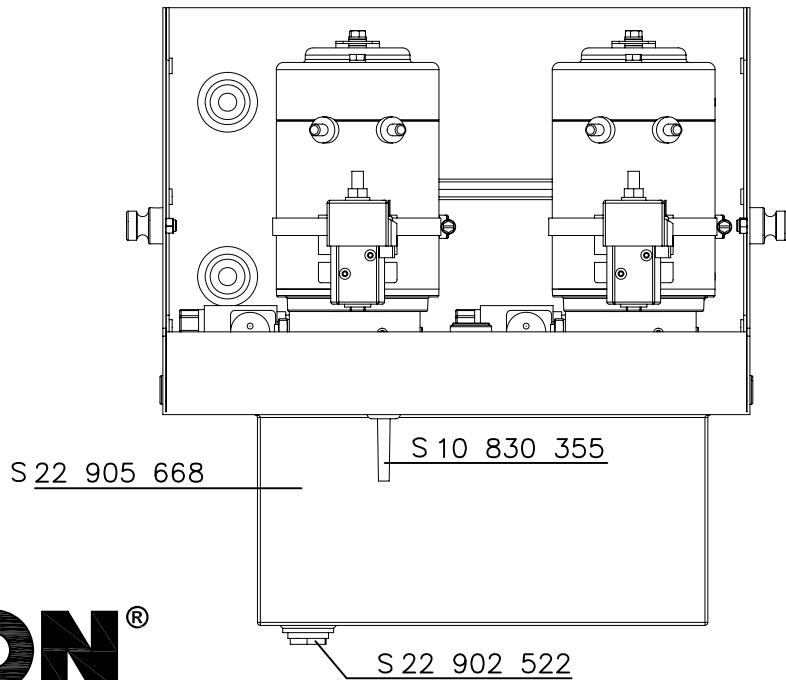
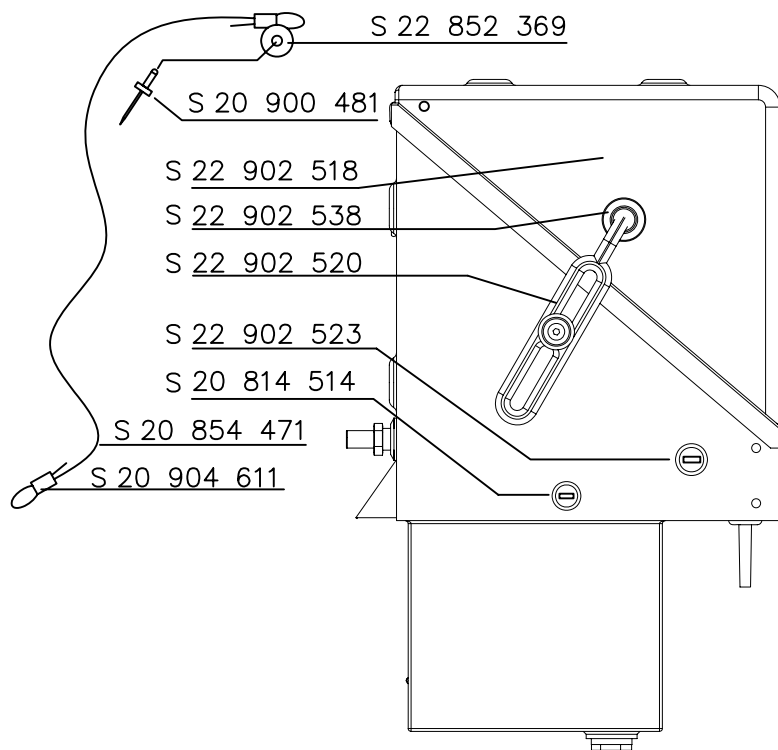
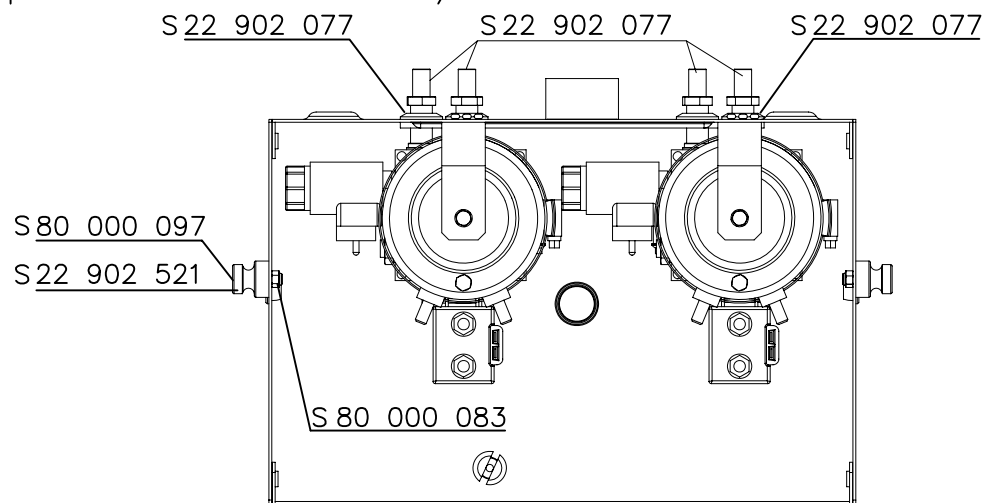


MAXON®

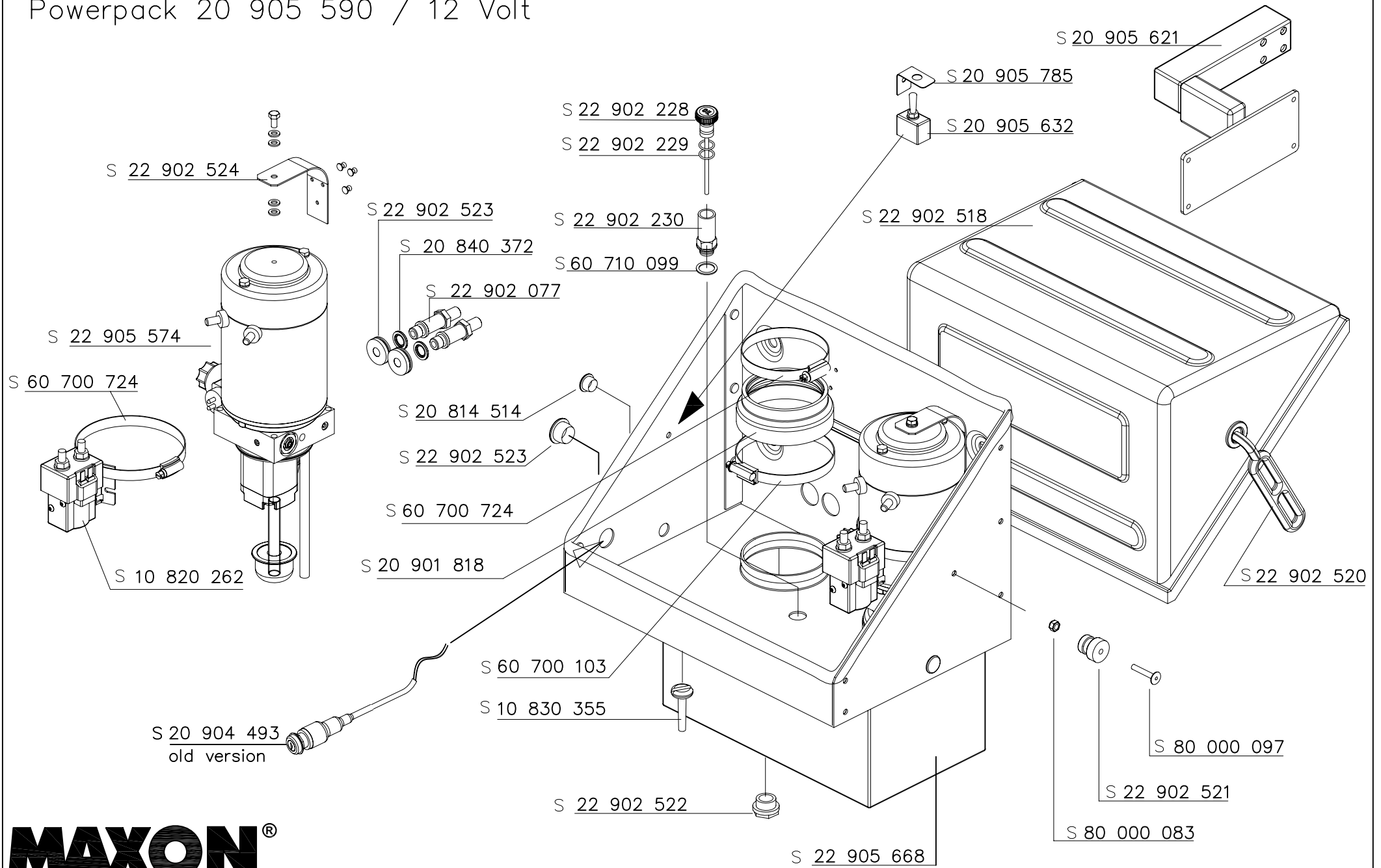
GPS 55 X1

Hydraulic oil - recommendations
 OIL SPECIFICATIONS
 Grade ISO - (32)
 Gravity, API - 29,5 Degrees
 Pour Point, F - (-54 Degrees)
 VISCOSITY
 @ 40 Degrees C - 31.2 cSt
 @ 100 Degrees C - 6.2 cSt
 VISCOSITY INDEX - 154 VI
 Flash Point, F - 325 Degrees

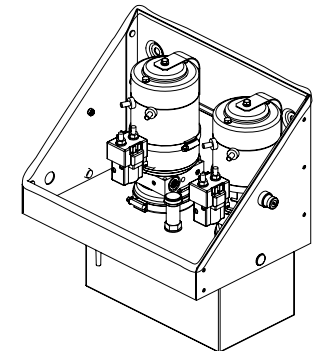
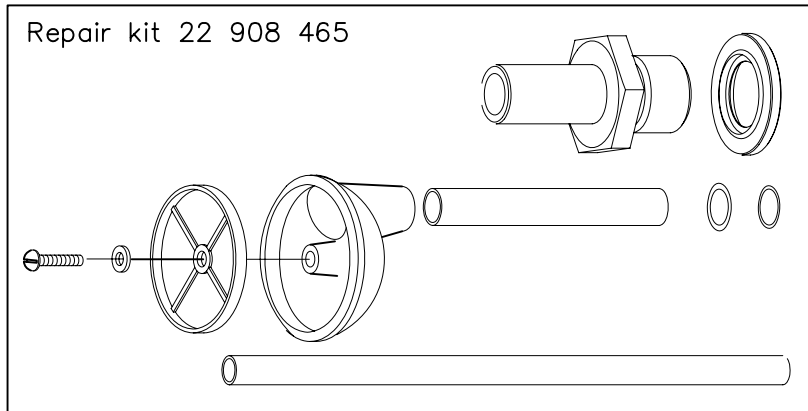
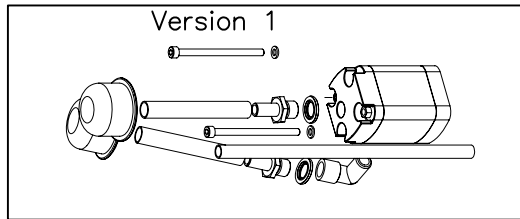
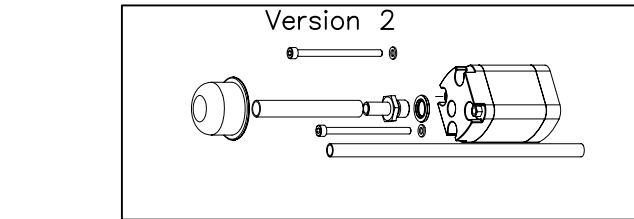
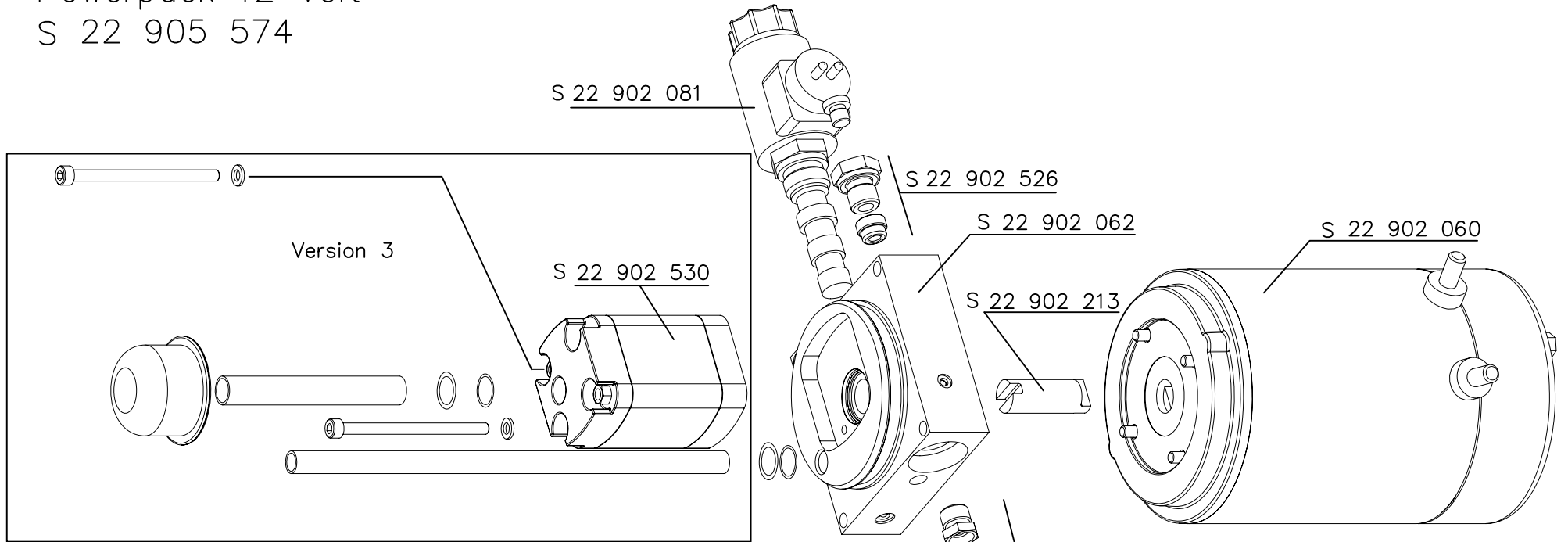
Powerpack 20 905 590 / 12 Volt



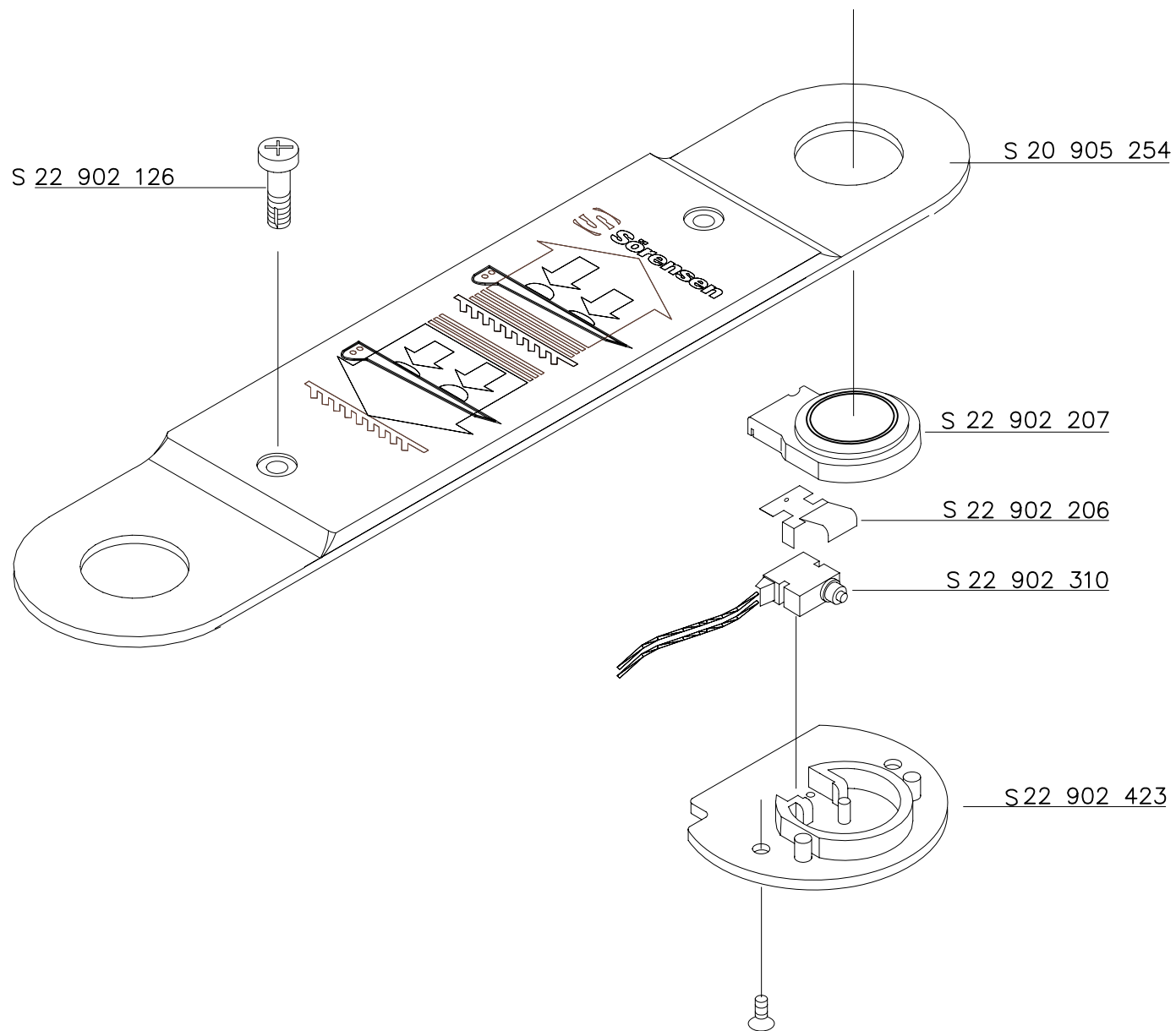
Powerpack 20 905 590 / 12 Volt



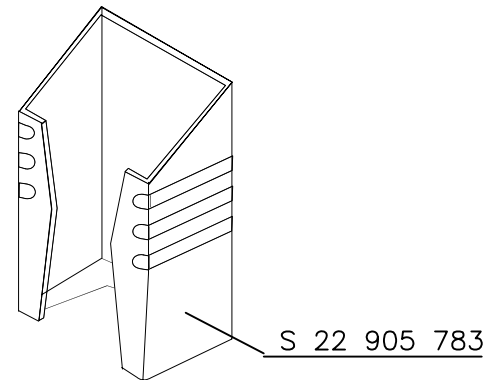
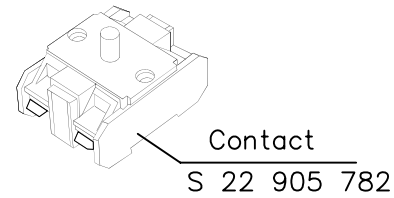
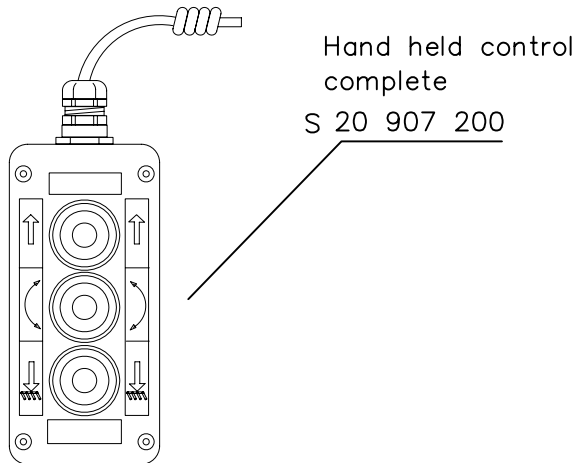
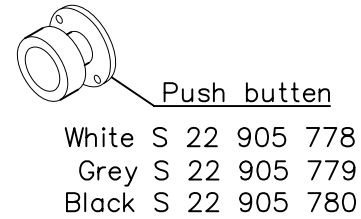
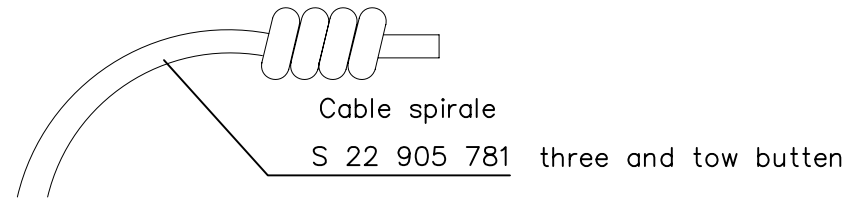
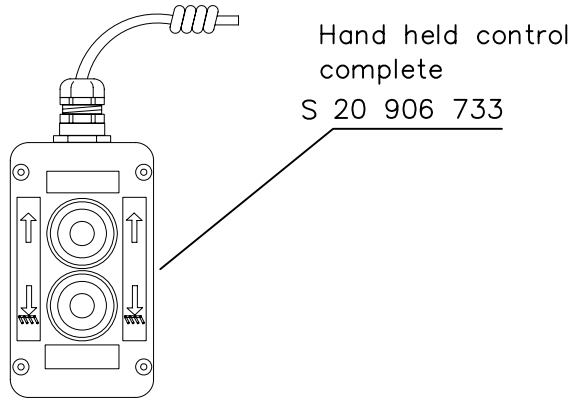
Powerpack 12 Volt
S 22 905 574

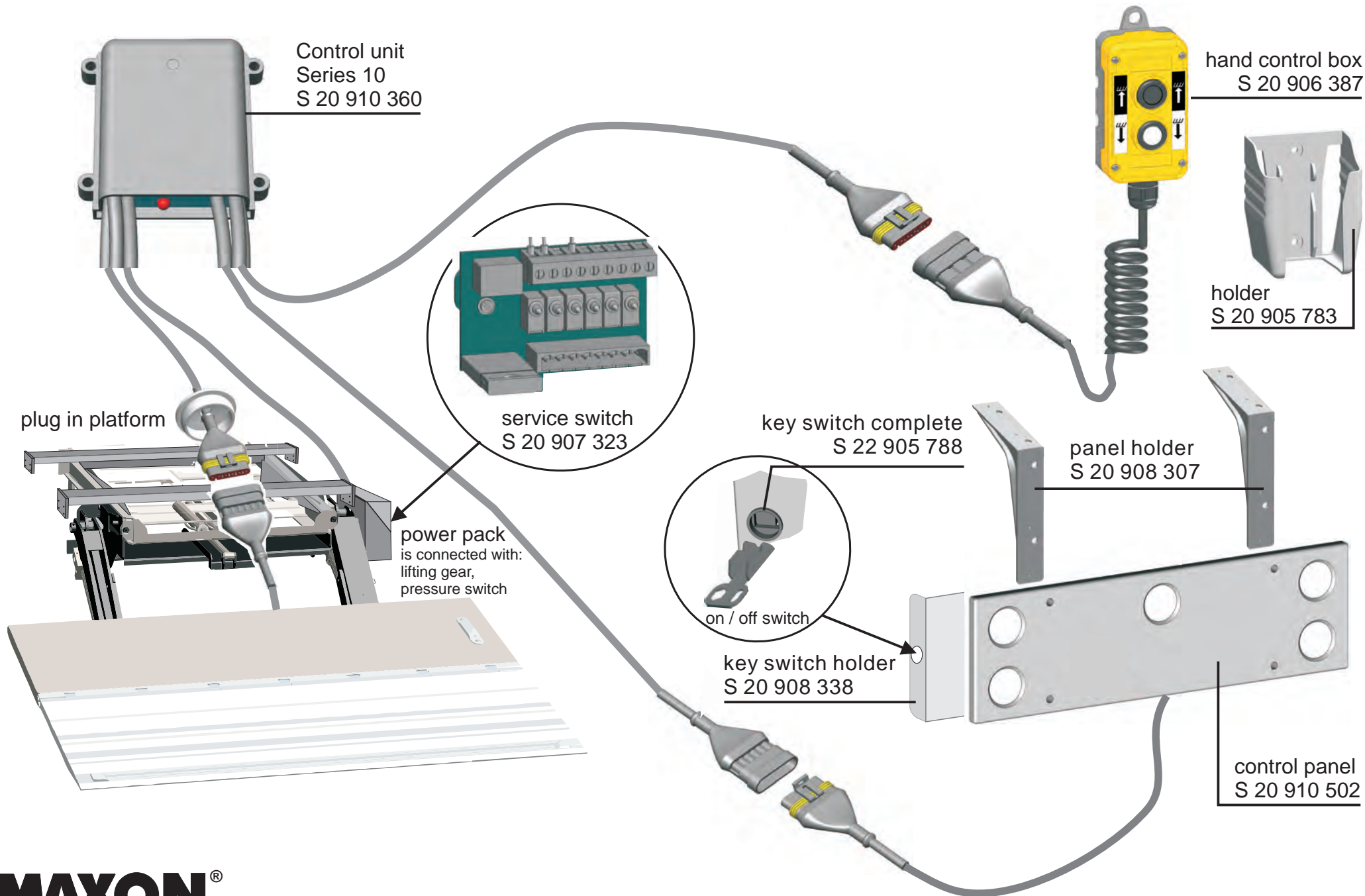


Footcontrol



Hand held control GPC – GPS – GPSS





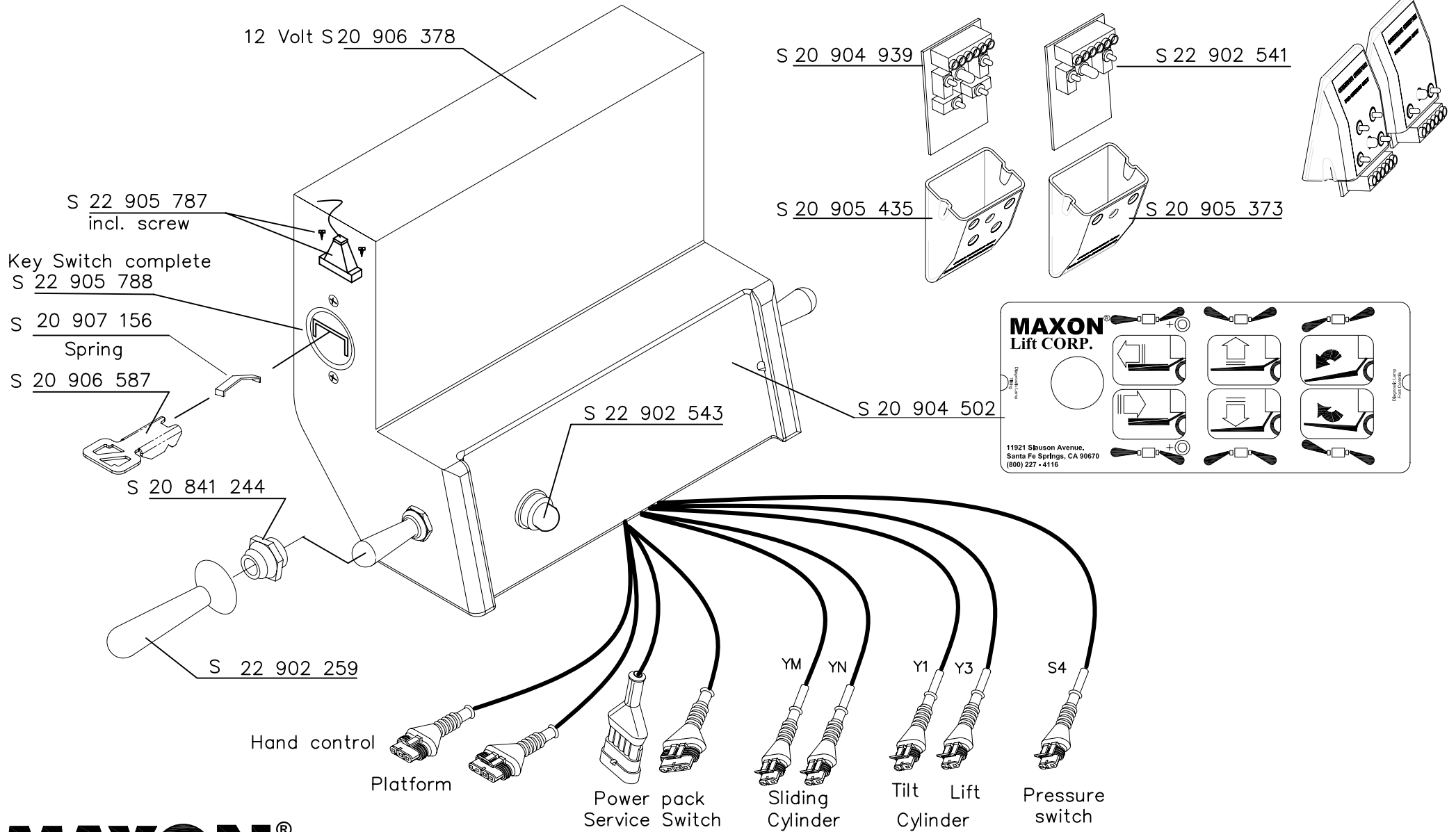
MAXON[®]

GPS 55 X1

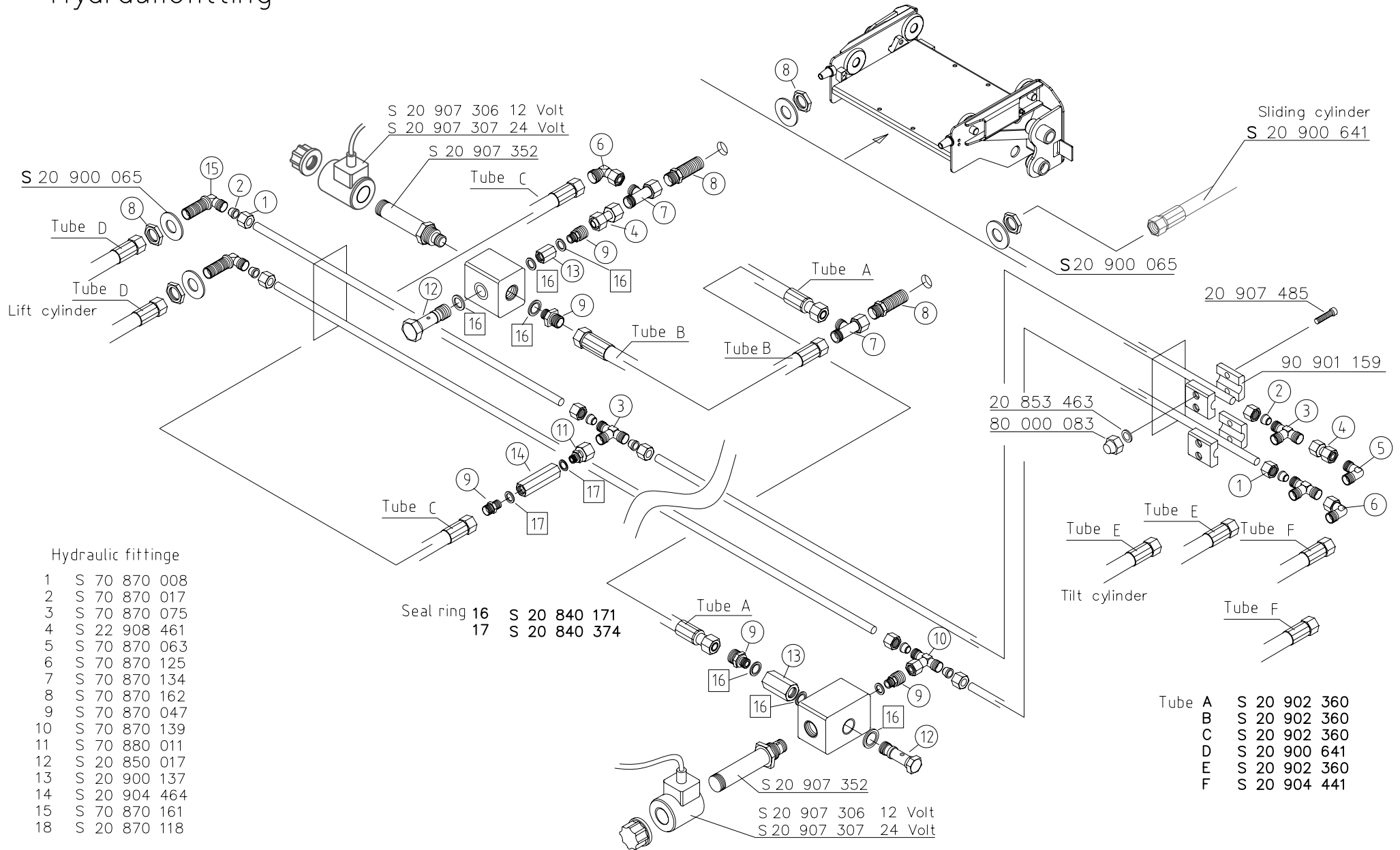
Document no.: 20 904 495
Series 10, from lift.-no. 83 307
Version 04.2013

Control unit

Service Switch



Hydraulicfitting



Hydraulic fittinge

- 1 S 70 870 008
- 2 S 70 870 017
- 3 S 70 870 075
- 4 S 22 908 461
- 5 S 70 870 063
- 6 S 70 870 125
- 7 S 70 870 134
- 8 S 70 870 162
- 9 S 70 870 047
- 10 S 70 870 139
- 11 S 70 880 011
- 12 S 20 850 017
- 13 S 20 900 137
- 14 S 20 904 464
- 15 S 70 870 161
- 18 S 20 870 118

- Tube A S 20 902 360
- B S 20 902 360
- C S 20 902 360
- D S 20 900 641
- E S 20 902 360
- F S 20 904 441

Hydraulicfitting

Alu pipe undeliverable new version page no. 12.1

