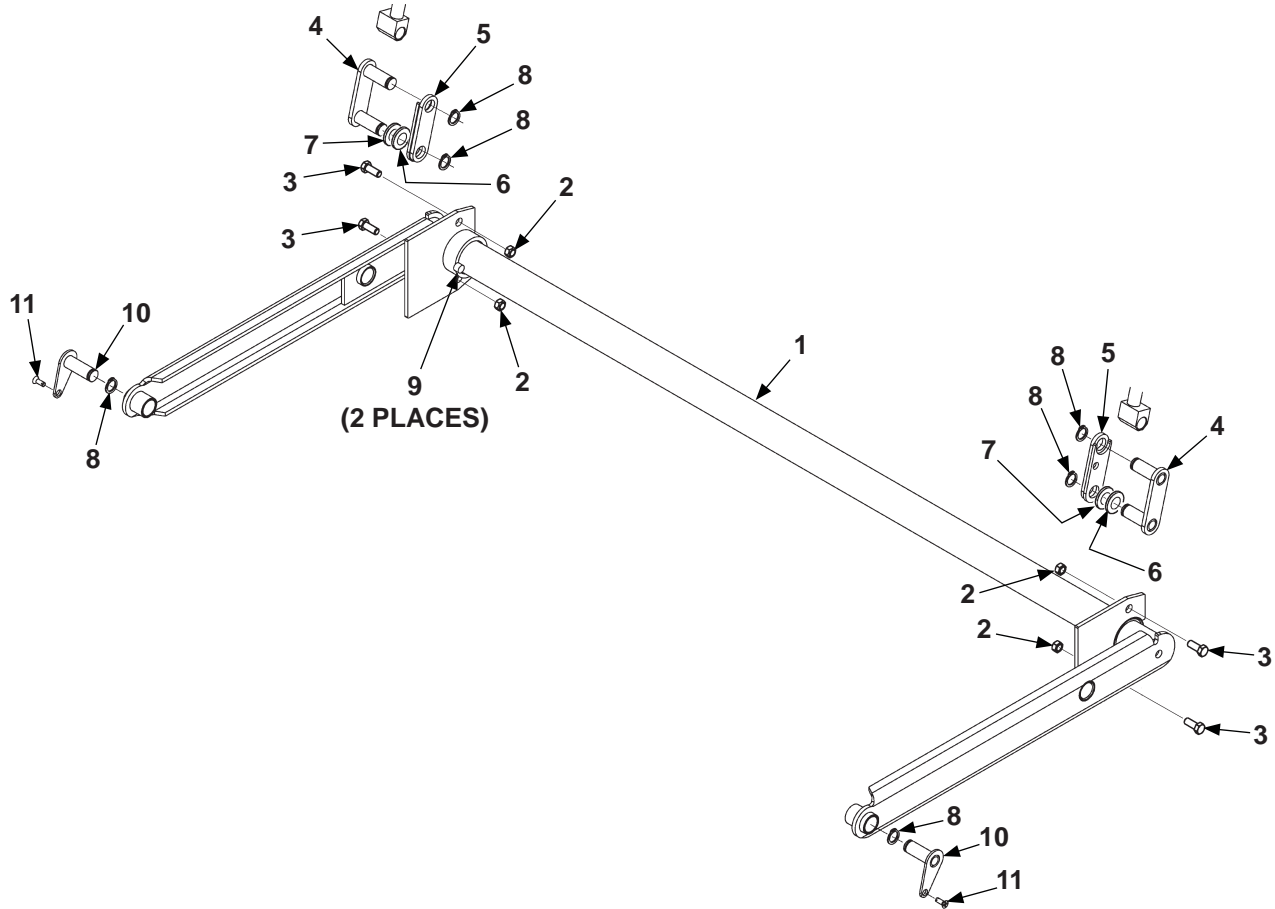


## INSTRUCTIONS, C2 UPPER ARM REPLACEMENT

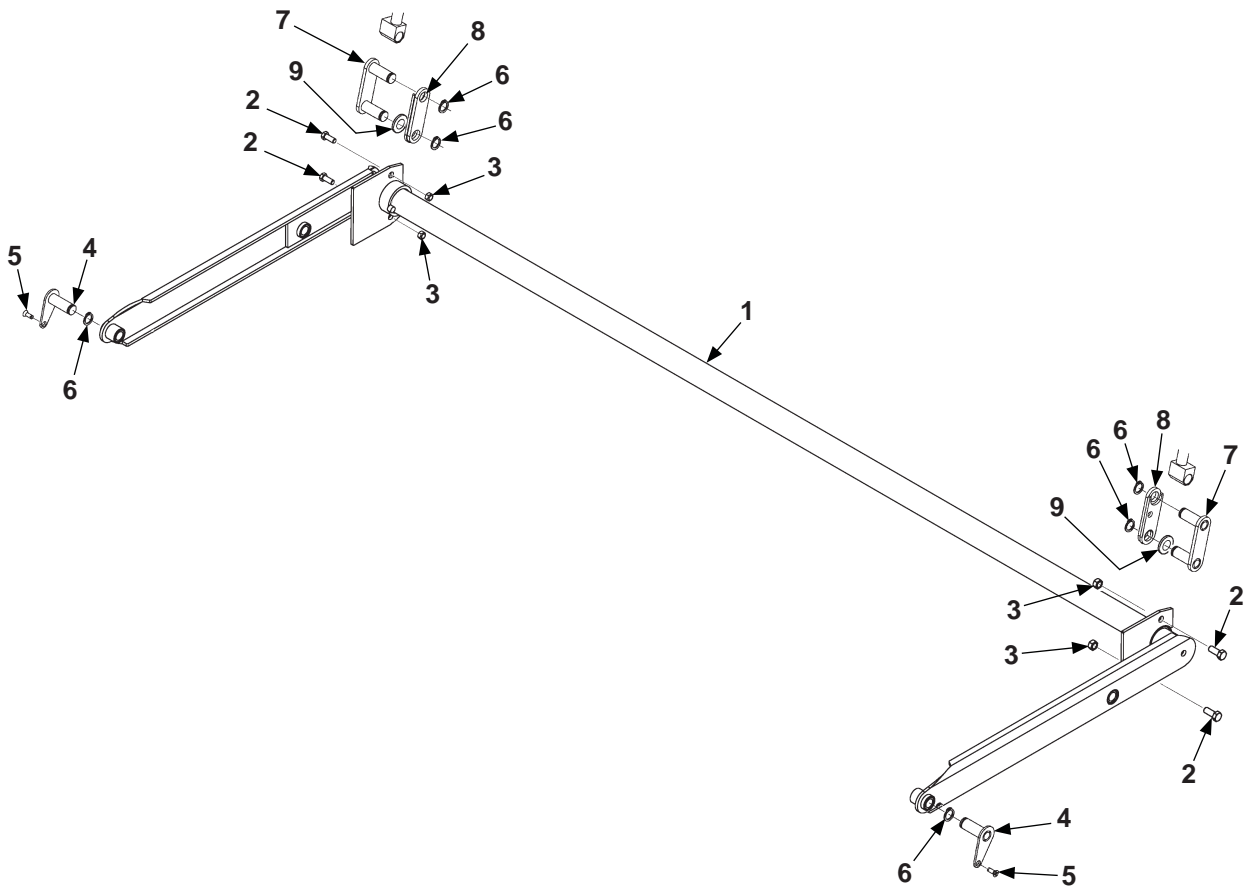
C2-60" LIFT FRAME REPLACEMENT KIT, P/N 295443-01 (11308)

C2-54" LIFT FRAME REPLACEMENT KIT, P/N 295443-02 (11307)



ITEM	QTY	DESCRIPTION
1	1	LIFT FRAME WELDMENT
2	4	LOCK NUT, 1/2"-13
3	4	HEX CAP SCREW, 1/2"-13 X 1-1/4" LG.
4	2	LINK PLATE WELDMENT
5	2	MASTER LINK WELDMENT
6	2	FLAT WASHER, 3/4" O.D. X .090" THK
7	2	FLAT WASHER, 3/4" O.D. X .032" THK
8	6	RETAINING RING, 3/4" DIA.
9	2	ROUND HR, 1/2" DIA.
10	2	PIN WELDMENT, 3/4" O.D. X 2" LG.
11	2	PHILLIPS FLAT HEAD SCREW, 1/4"-20 X 3/4" LG.

**C2-91" LIFT FRAME REPLACEMENT KIT, P/N 295484-01 (2544)**

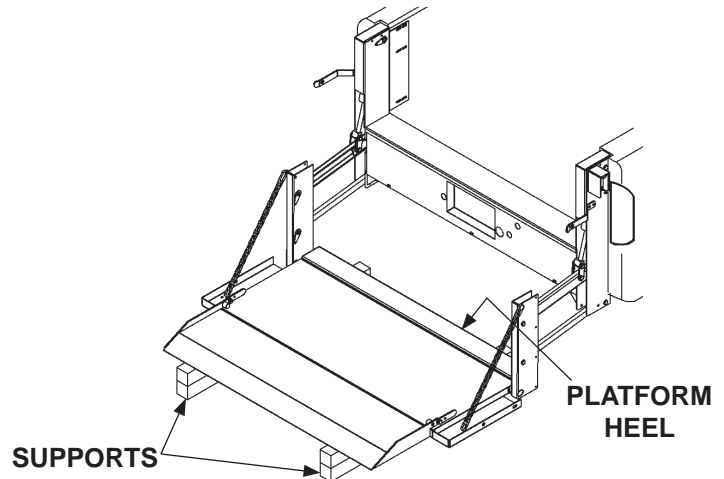


ITEM	QTY	DESCRIPTION
1	1	LIFT FRAME WELDMENT
2	4	HEX CAP SCREW, 1/2"-13 X 1-1/4" LG.
3	4	LOCK NUT, 1/2"-13
4	2	PIN WELDMENT, 3/4" O.D. X 2" LG.
5	2	PHILLIPS FLAT HEAD SCREW, 1/4"-20 X 3/4" LG.
6	6	RETAINING RING, 3/4" DIA.
7	2	LINK PLATE WELDMENT
8	2	MASTER LINK WELDMENT
9	2	FLAT WASHER, 3/4" O.D. X .090" THK

**⚠ WARNING**

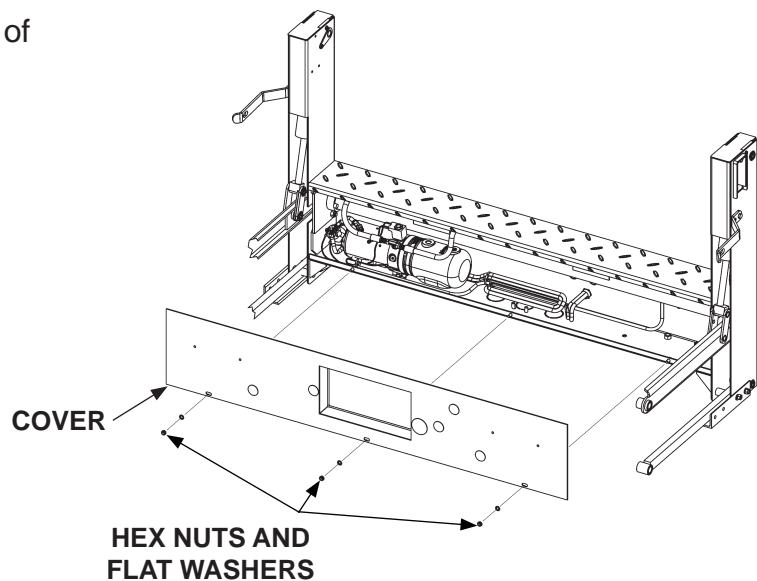
To prevent accidental personal injury and equipment damage, disconnect (-) battery cable from battery.

1. Unfold the platform and activate Liftgate.  
Refer to **C2 Operation Manual**.
2. Lower the platform on supports, making sure the platform heel is supported (**FIG. 3-1**).
3. Disconnect ground (-) battery cable from vehicle battery.



**SUPPORTING LIFTGATE &  
RELEASING PRESSURE  
FIG. 3-1**

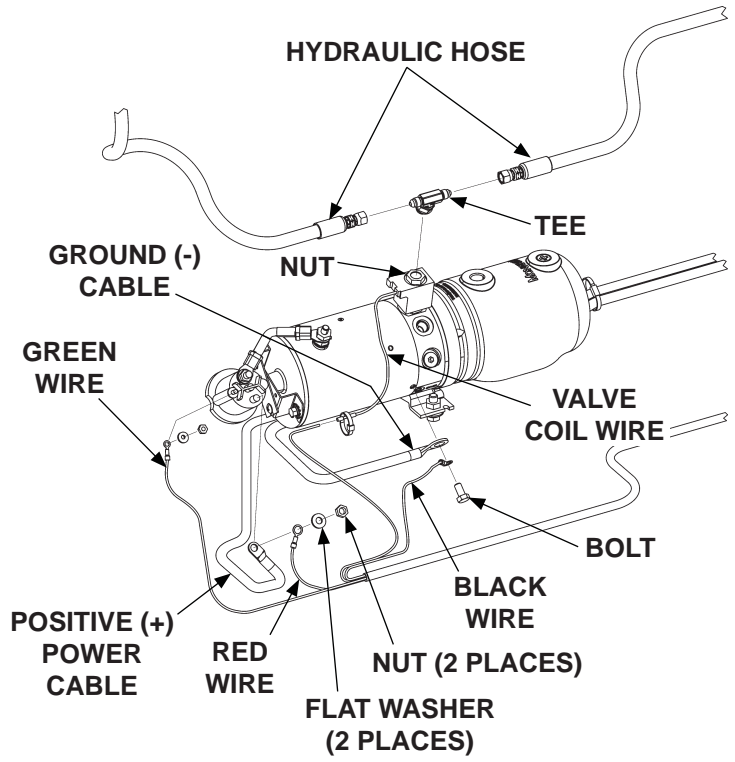
4. Unbolt cover and remove from front of Liftgate as shown in **FIG. 3-2**.



**UNBOLTING & REMOVING COVER  
FIG. 3-2**

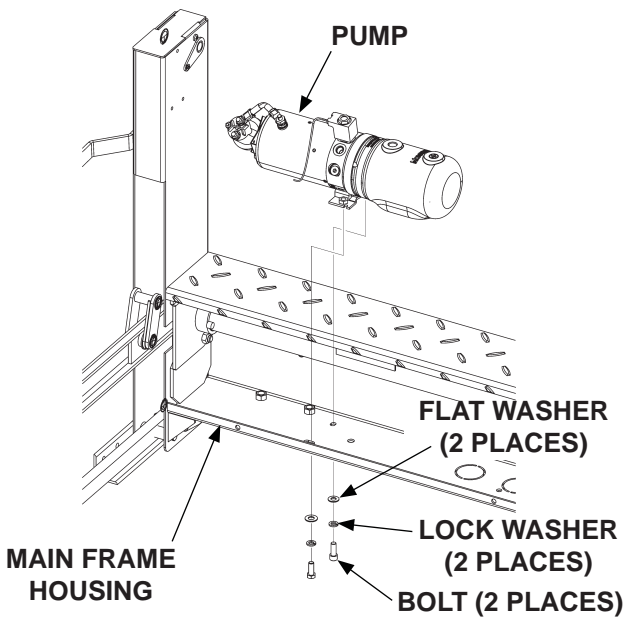
**NOTE:** Place a rag under the tee to absorb hydraulic oil. Place the end of the hydraulic hose over a bucket to drain remaining hydraulic fluid from the cylinder.

5. Loosen nut (FIG. 4-1) and remove tee (FIG. 4-1).
6. Disconnect the hydraulic hoses (FIG. 4-1) connected to the tee.
7. Disconnect green wire, positive (+) power cable, and red wire from the solenoid (FIG. 4-1). Next, disconnect valve coil wire (FIG. 4-1). Then, disconnect ground (-) cable and black wire from the pump body (FIG. 4-1).



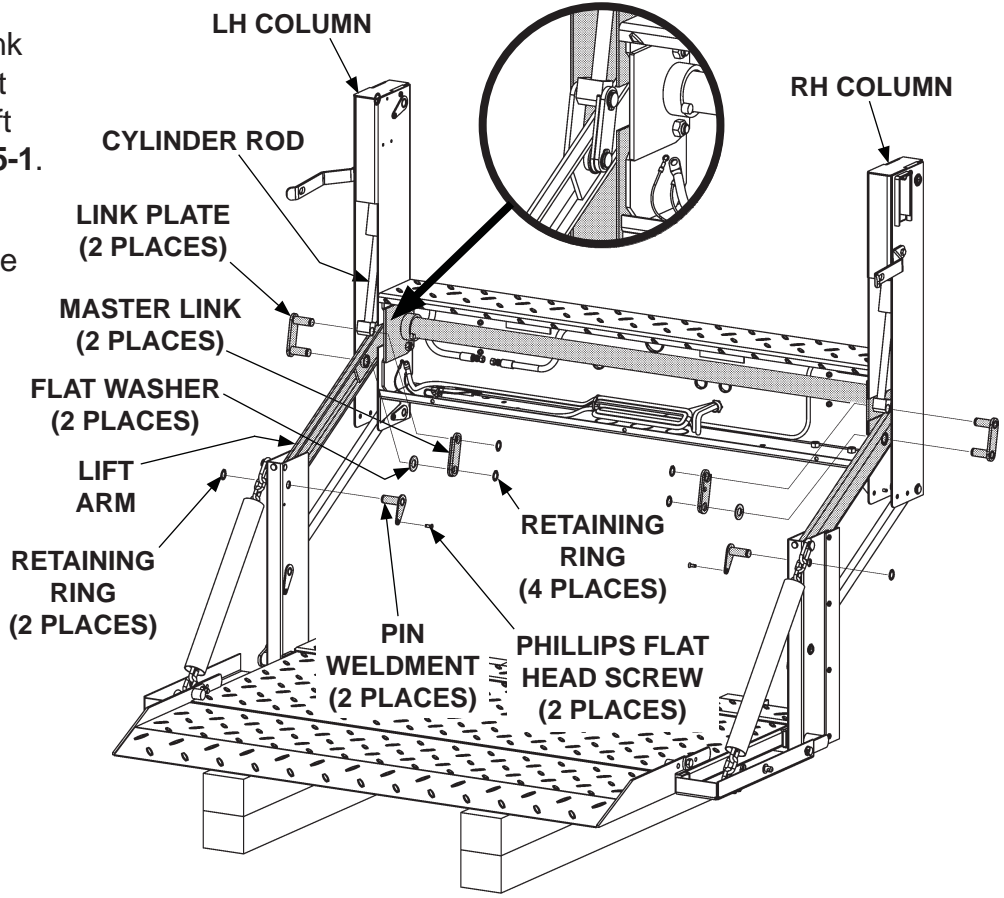
**DISCONNECTING HYDRAULIC HOSES & ELECTRICAL WIRES**  
FIG. 4-1

8. Unbolt pump from the bottom of the main frame housing as shown in FIG. 4-2.



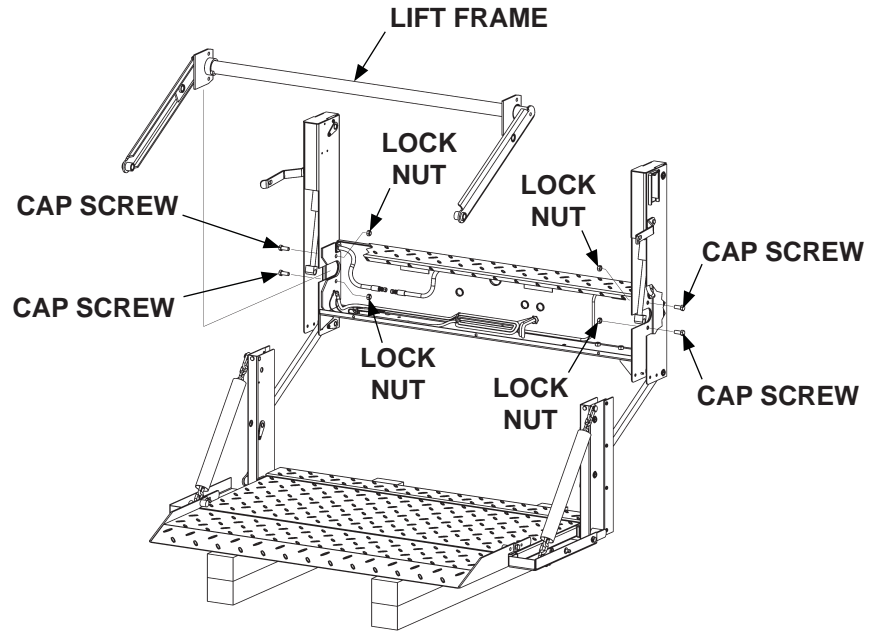
**UNFASTENING / FASTENING PUMP**  
FIG. 4-2

- 9. Remove master link, link plate and pin weldment from LH cylinder and lift arm as shown in FIG. 5-1.
- 10. Repeat for the RH side of lift frame.



**UNINSTALLING MASTER LINK WELDMENT  
FIG. 5-1**

- 11. Remove lock nuts and cap screws as shown in FIG. 5-2, then, remove lift frame (FIG. 5-2).

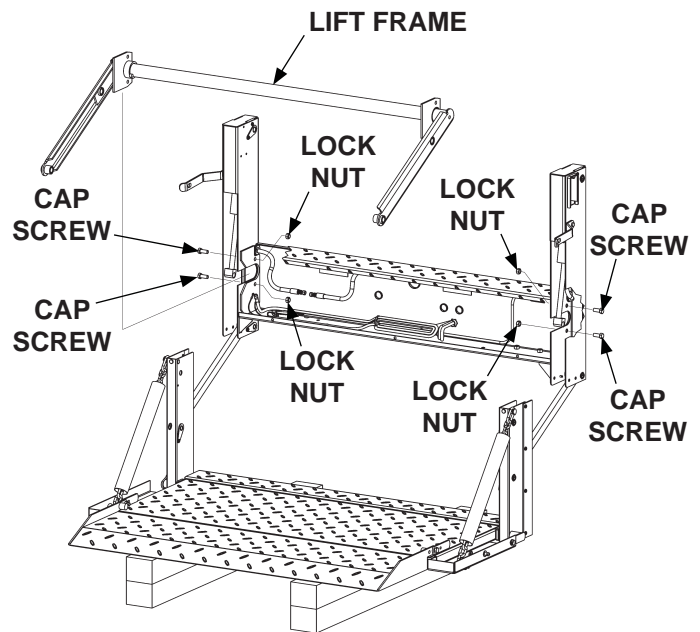


**REMOVING LIFT FRAME  
FIG. 5-2**

12. Install new lift frame (Kit item) as shown in **FIG. 6-1**, then, fasten lift frame to Liftgate with cap screws (Kit items) and lock nuts (Kit items) (**FIG. 6-1**).

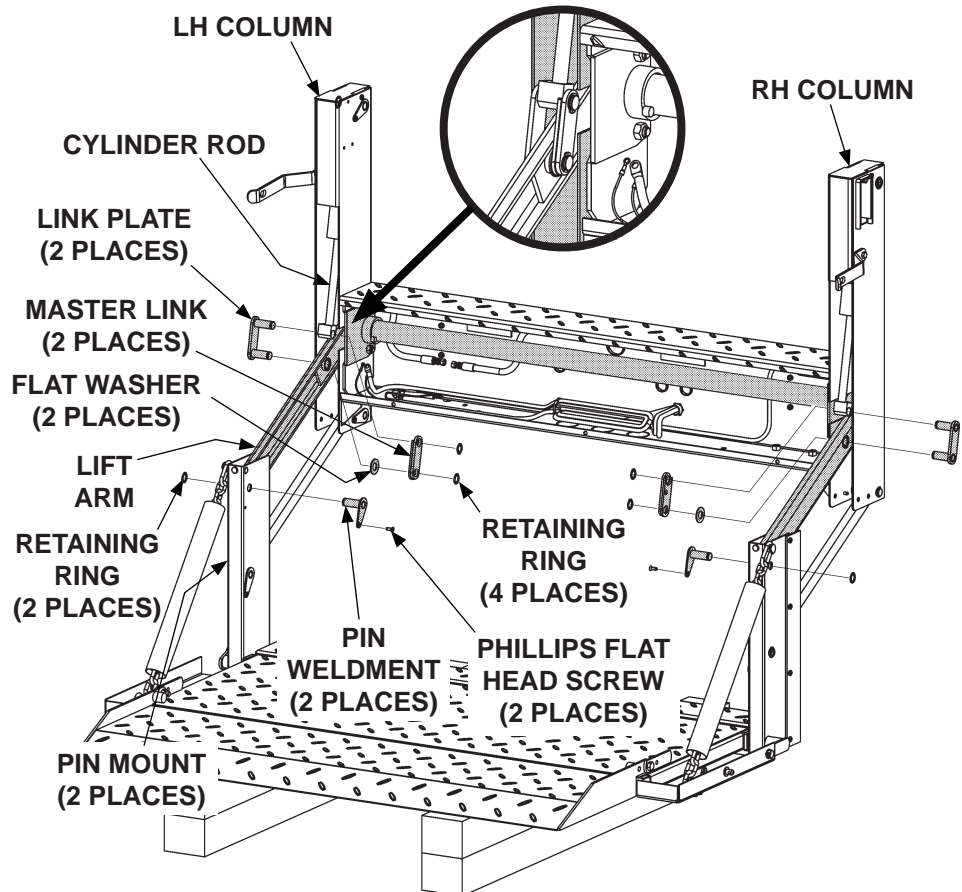
**NOTE:** MAXON does not supply grease.

13. Apply grease to the master link (Kit item) (**FIG. 6-2**).
14. Insert LH link plate (Kit item) with one pin through the lift arm and one through the cylinder rod (**FIG. 6-2**). Then, install flat washer (Kit item) on the lower pin (**FIG. 6-2**). Next, slide master link (Kit item) over upper and lower pins and secure with retaining rings (Kit items) (**FIG. 6-2**) by snapping rings in the grooves at the end of master link pins.



**INSTALLING LIFT FRAME**  
**FIG. 6-1**

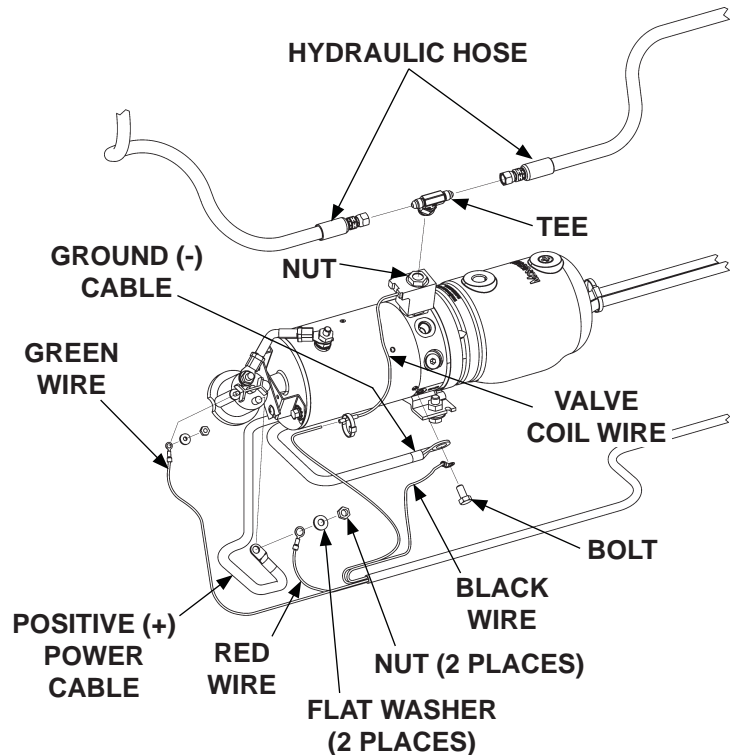
15. Insert LH pin weldment (Kit item) through LH pin mount and lift arm (**FIG. 6-2**). Secure pin weldment with retaining ring (Kit item) by snapping ring in the groove at the end of the pin (**FIG. 6-2**).
16. Repeat steps 13 through 15 for RH side (**FIG. 6-2**).



**INSTALLING MASTER LINK WELDMENT**  
**FIG. 6-2**

**NOTE:** Do not twist the hydraulic hose during installation. This may cause the hose to fail prematurely.

17. Reconnect ground (-) cable and black wire to the pump body (FIG. 7-1). Next, reconnect valve coil wire (FIG. 7-1). Then, reconnect green wire, positive (+) power cable, and red wire from the solenoid (FIG. 7-1).
18. Reconnect the hydraulic hoses to the tee (FIG. 7-1).
19. Reinstall tee and tighten nut (FIG. 7-1).

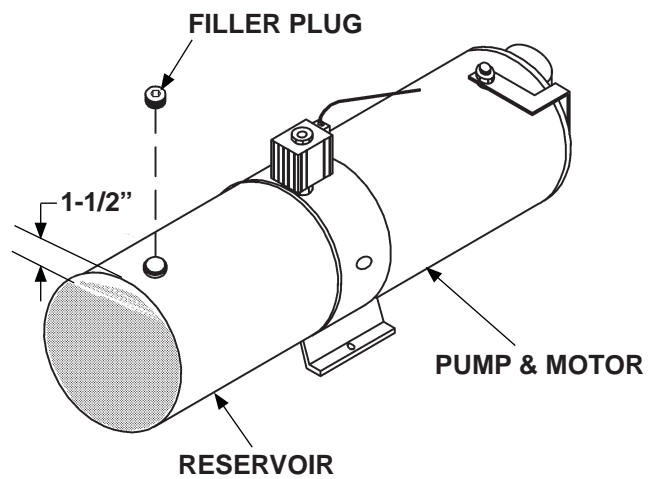


**DISCONNECTING HYDRAULIC HOSES & ELECTRICAL WIRES  
FIG. 7-1**

## CAUTION

Use ISO Grade 32 hydraulic oil only.  
Any other oil will void cylinder warranty.

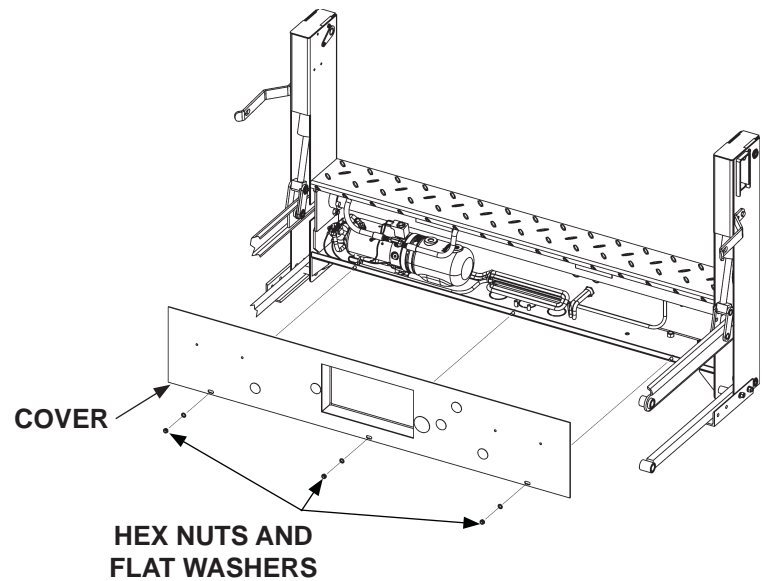
20. Remove the filler plug from the pump reservoir (FIG. 7-2). With platform on the ground, fill reservoir with hydraulic oil approximately 1-1/2" below the fill hole. Then, install filler plug in the pump reservoir (FIG. 7-2).



**INSTALLING BREATHER PLUG ON  
PUMP RESERVOIR  
FIG. 7-2**

21. Reinstall cover and tighten cover fasteners (**FIG. 8-1**).

22. Reconnect ground (-) battery cable to vehicle battery.



**REINSTALLING COVER**  
**FIG. 8-1**

**NOTE:** Refer to **C2 Operation Manual** for detailed instructions on operating the liftgate.

23. Activate Liftgate. Then, raise platform to bed height and stow the platform. Remove supports from under the platform.